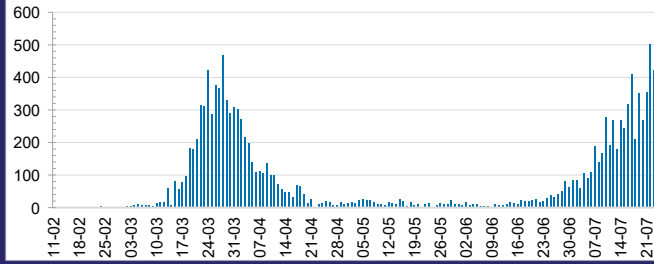




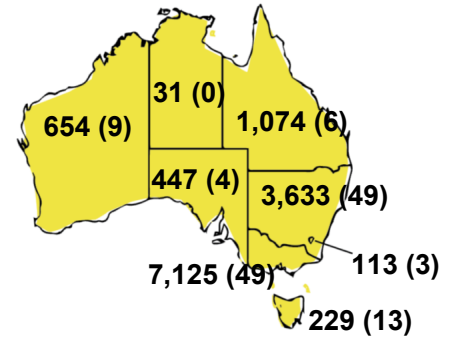
**CURRENT STATUS OF CONFIRMED CASES**



**DAILY NUMBER OF REPORTED CASES**



**CASES (DEATHS) BY STATE AND TERRITORIES**



**41**



| ACT | NSW | NT | QLD | SA | TAS | VIC | WA |
|-----|-----|----|-----|----|-----|-----|----|
| 0   | 1   | 0  | 0   | 0  | 0   | 40  | 0  |

**211**



| ACT | NSW | NT | QLD | SA | TAS | VIC | WA |
|-----|-----|----|-----|----|-----|-----|----|
| 0   | 6   | 1  | 2   | 0  | 1   | 201 | 0  |

**3,719,837**



**0.4%** POSITIVE

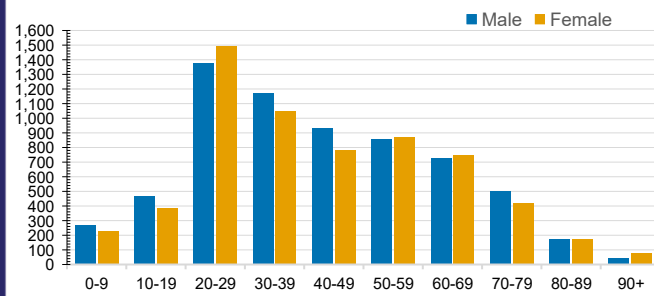
| ACT      | NSW       | NT        | QLD      |
|----------|-----------|-----------|----------|
| 45,407   | 1,261,260 | 21,542    | 482,473  |
| POSITIVE | POSITIVE  | POSITIVE  | POSITIVE |
| 0.2%     | 0.3%      | 0.1%      | 0.2%     |
| SA       | TAS       | VIC       | WA       |
| 199,703  | 63,360    | 1,413,115 | 232,977  |
| POSITIVE | POSITIVE  | POSITIVE  | POSITIVE |
| 0.2%     | 0.4%      | 0.5%      | 0.3%     |

**CASES IN AGED CARE SERVICES**

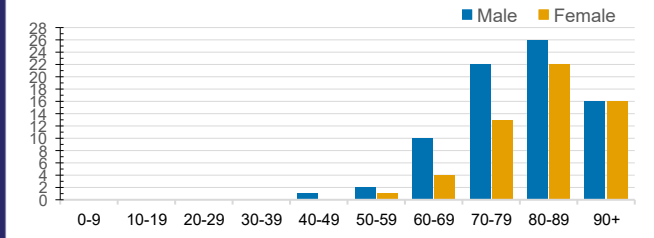
| Confirmed Cases             | Australia | ACT | NSW     | NT | QLD   | SA    | TAS   | VIC     | WA    |
|-----------------------------|-----------|-----|---------|----|-------|-------|-------|---------|-------|
| Residential Care Recipients | 301 [40]  | 0   | 61 [32] | 0  | 1 (1) | 0     | 1 (1) | 238 [8] | 0     |
| In Home Care Recipients     | 41 [28]   | 0   | 13 [13] | 0  | 8 [8] | 1 [1] | 5 [3] | 13 [3]  | 1 (1) |

Cases in care recipients [recovered] (deaths)

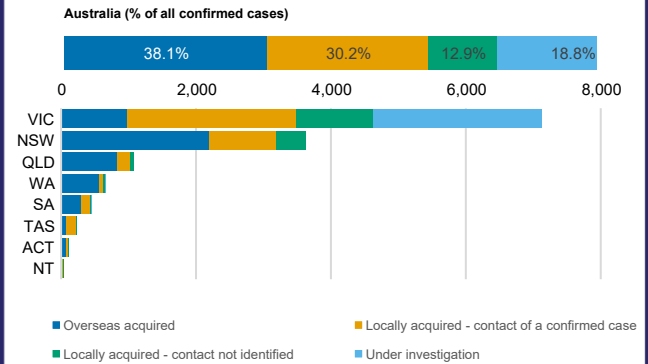
**CASES BY AGE GROUP AND SEX**



**DEATHS BY AGE GROUP AND SEX**



**CASES BY SOURCE OF INFECTION**



**PUBLIC HEALTH RESPONSE MEASURE**

