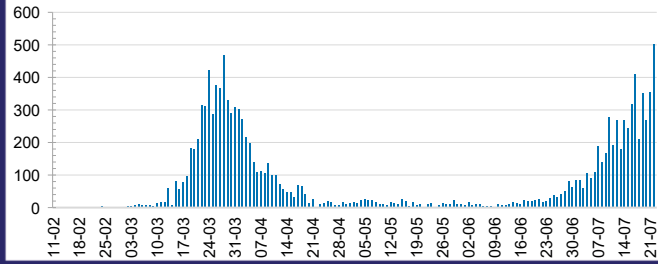




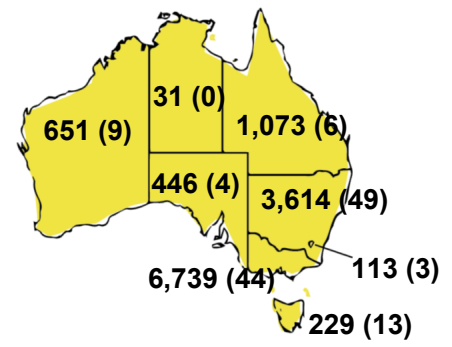
CURRENT STATUS OF CONFIRMED CASES



DAILY NUMBER OF REPORTED CASES



CASES (DEATHS) BY STATE AND TERRITORIES



42



ACT	NSW	NT	QLD	SA	TAS	VIC	WA
0	2	0	0	0	0	40	0



214

ACT	NSW	NT	QLD	SA	TAS	VIC	WA
0	5	1	2	0	1	205	0

3,650,529



0.4% POSITIVE

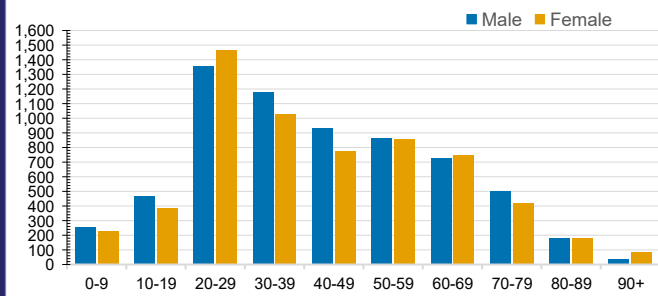
ACT	NSW	NT	QLD
44,078	1,236,620	21,137	474,333
POSITIVE	POSITIVE	POSITIVE	POSITIVE
0.3%	0.3%	0.1%	0.2%
SA	TAS	VIC	WA
195,367	62,628	1,385,964	230,402
POSITIVE	POSITIVE	POSITIVE	POSITIVE
0.2%	0.4%	0.5%	0.3%

CASES IN AGED CARE SERVICES

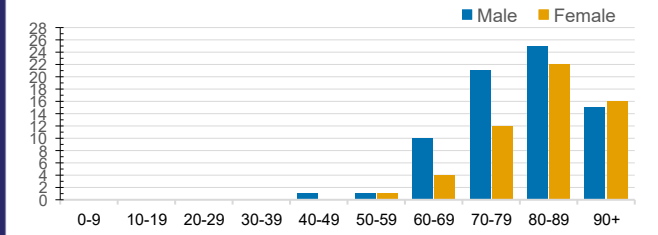
Confirmed Cases	Australia	ACT	NSW	NT	QLD	SA	TAS	VIC	WA
Residential Care Recipients	280 [40]	0	61 [32] (29)	0	1 (1)	0	1 (1)	217 [8] (12)	0
In Home Care Recipients	37 [28] (4)	0	13 [13]	0	8 [8]	1 [1]	5 [3] (2)	9 [3] (1)	1 (1)

Cases in care recipients [recovered] (deaths)

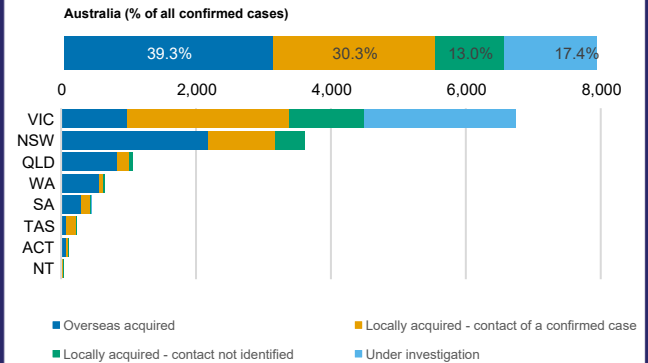
CASES BY AGE GROUP AND SEX



DEATHS BY AGE GROUP AND SEX



CASES BY SOURCE OF INFECTION



PUBLIC HEALTH RESPONSE MEASURE

