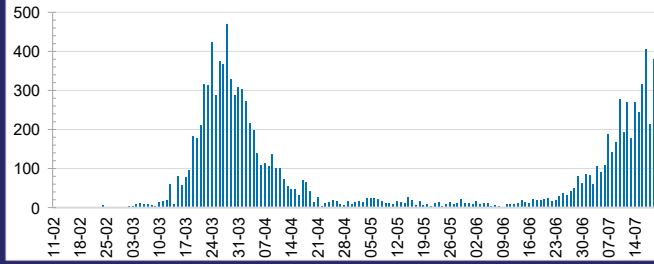




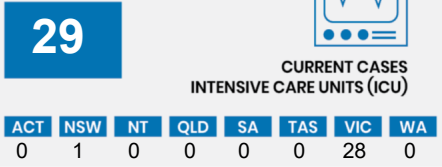
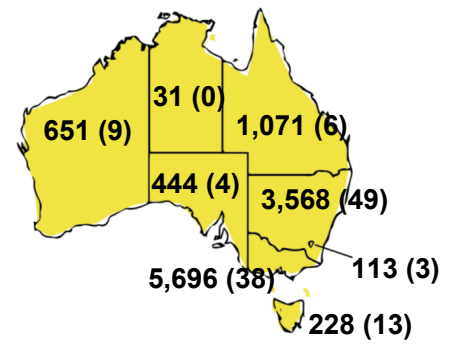
CURRENT STATUS OF CONFIRMED CASES



DAILY NUMBER OF REPORTED CASES



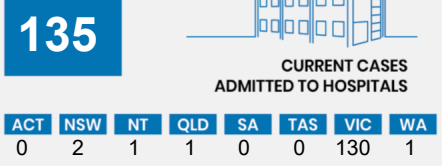
CASES (DEATHS) BY STATE AND TERRITORIES



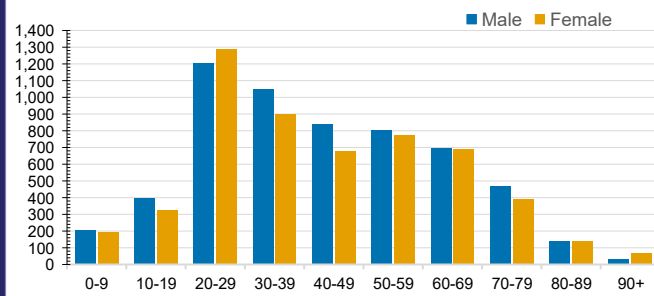
CASES IN AGED CARE SERVICES

Confirmed Cases	Australia	ACT	NSW	NT	QLD	SA	TAS	VIC	WA
Residential Care Recipients	181 [40]	0	61 [32]	0	1 (1)	0	1 (1)	118 [8]	0
In Home Care Recipients	35 [28]	0	13 [13]	0	8 [8]	1 [1]	5 [3]	7 [3]	1 (1)

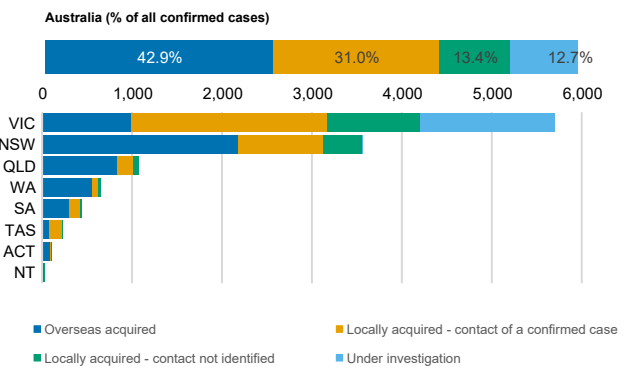
Cases in care recipients [recovered] (deaths)



CASES BY AGE GROUP AND SEX

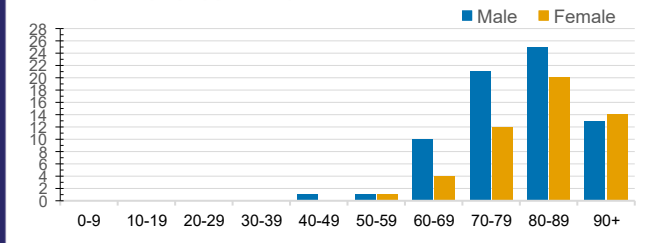


CASES BY SOURCE OF INFECTION



ACT	NSW	NT	QLD
42,003	1,181,085	19,907	459,139
POSITIVE	POSITIVE	POSITIVE	POSITIVE
0.3%	0.3%	0.2%	0.2%
SA	TAS	VIC	WA
188,428	60,957	1,305,186	219,758
POSITIVE	POSITIVE	POSITIVE	POSITIVE
0.2%	0.4%	0.4%	0.3%

DEATHS BY AGE GROUP AND SEX



PUBLIC HEALTH RESPONSE MEASURE

