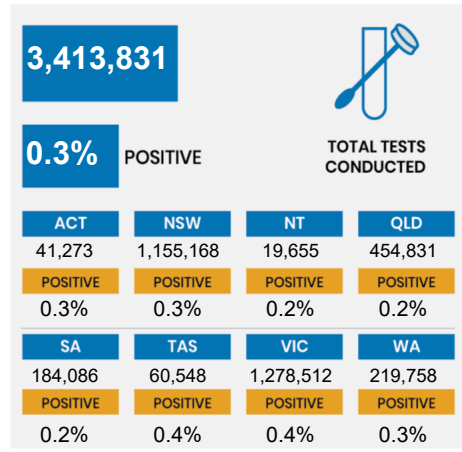
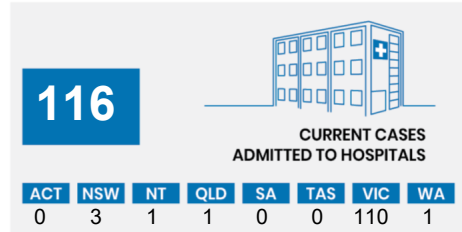
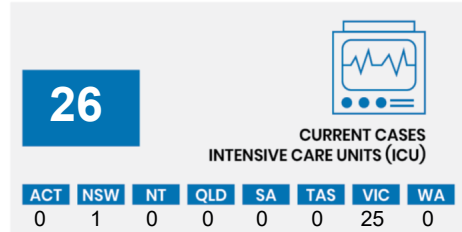
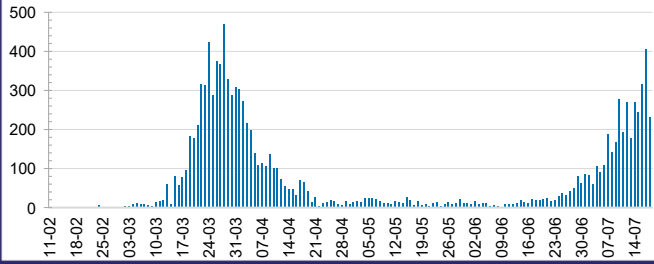




**CURRENT STATUS OF CONFIRMED CASES**



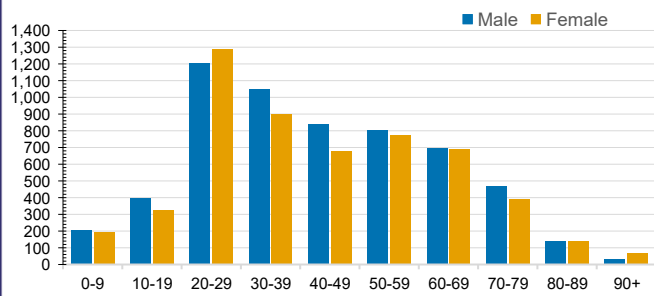
**DAILY NUMBER OF REPORTED CASES**



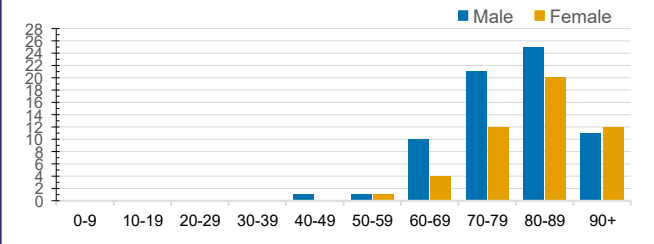
**CASES IN AGED CARE SERVICES**

Confirmed Cases	Australia	ACT	NSW	NT	QLD	SA	TAS	VIC	WA
Residential Care Recipients	162 [40]	0	61 [32]	0	1 (1)	0	1 (1)	99 [8]	0
In Home Care Recipients	35 [28]	0	13 [13]	0	8 [8]	1 [1]	5 [3]	7 [3]	1 (1)
Cases in care recipients [recovered] (deaths)									

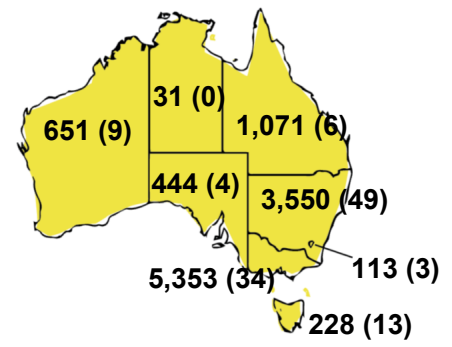
**CASES BY AGE GROUP AND SEX**



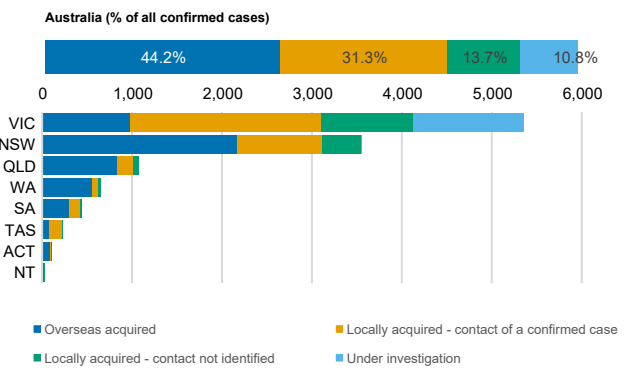
**DEATHS BY AGE GROUP AND SEX**



**CASES (DEATHS) BY STATE AND TERRITORIES**



**CASES BY SOURCE OF INFECTION**



**PUBLIC HEALTH RESPONSE MEASURE**

