



CURRENT STATUS OF CONFIRMED CASES



18



| ACT | NSW | NT | QLD | SA | TAS | VIC | WA |
|-----|-----|----|-----|----|-----|-----|----|
| 0 | 1 | 0 | 0 | 0 | 0 | 17 | 0 |

92



| ACT | NSW | NT | QLD | SA | TAS | VIC | WA |
|-----|-----|----|-----|----|-----|-----|----|
| 0 | 17 | 2 | 1 | 0 | 0 | 72 | 0 |

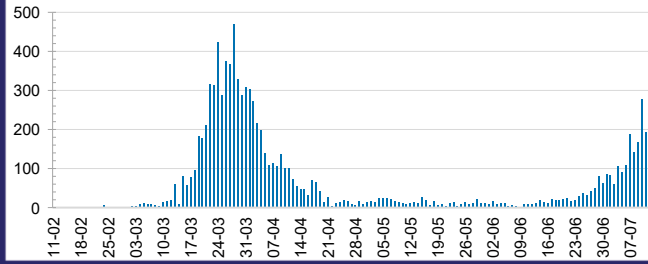
3,117,788



0.3% POSITIVE

| ACT | NSW | NT | QLD |
|----------|-----------|-----------|----------|
| 37,233 | 1,050,171 | 17,028 | 423,911 |
| POSITIVE | POSITIVE | POSITIVE | POSITIVE |
| 0.3% | 0.3% | 0.2% | 0.3% |
| SA | TAS | VIC | WA |
| 174,553 | 57,463 | 1,148,357 | 209,072 |
| POSITIVE | POSITIVE | POSITIVE | POSITIVE |
| 0.3% | 0.4% | 0.3% | 0.3% |

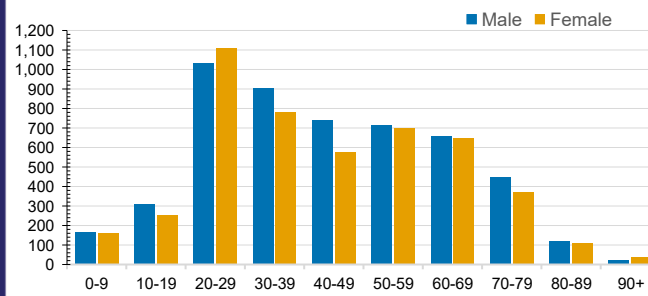
DAILY NUMBER OF REPORTED CASES



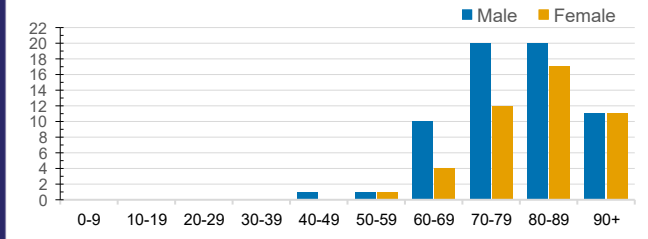
CASES IN AGED CARE SERVICES

| Confirmed Cases | Australia | ACT | NSW | NT | QLD | SA | TAS | VIC | WA |
|---|-----------|-----|---------|----|-------|-------|-------|--------|-------|
| Residential Care Recipients | 100 [40] | 0 | 61 [32] | 0 | 1 (1) | 0 | 1 (1) | 37 [8] | 0 |
| In Home Care Recipients | 34 [28] | 0 | 13 [13] | 0 | 8 [8] | 1 [1] | 5 [3] | 6 [3] | 1 (1) |
| Cases in care recipients [recovered] (deaths) | | | | | | | | | |

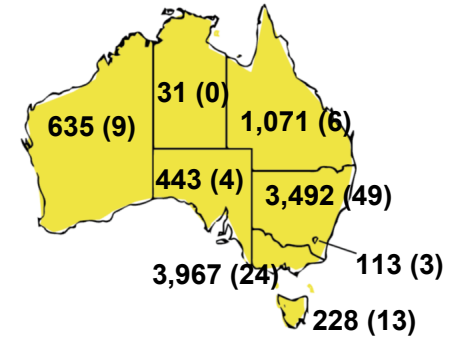
CASES BY AGE GROUP AND SEX



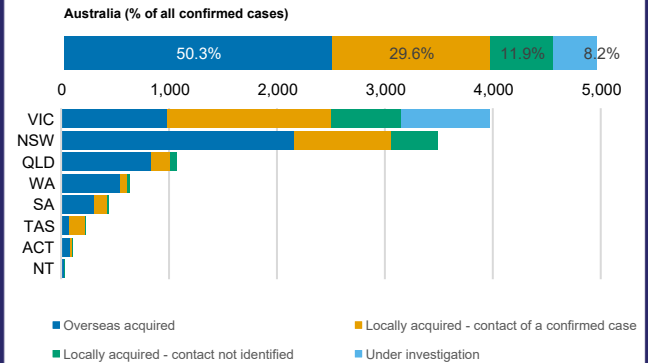
DEATHS BY AGE GROUP AND SEX



CASES (DEATHS) BY STATE AND TERRITORIES



CASES BY SOURCE OF INFECTION



PUBLIC HEALTH RESPONSE MEASURE

