



CURRENT STATUS OF CONFIRMED CASES



17



ACT	NSW	NT	QLD	SA	TAS	VIC	WA
0	1	0	0	0	0	16	0

67



ACT	NSW	NT	QLD	SA	TAS	VIC	WA
0	7	2	1	0	0	57	0

3,075,488

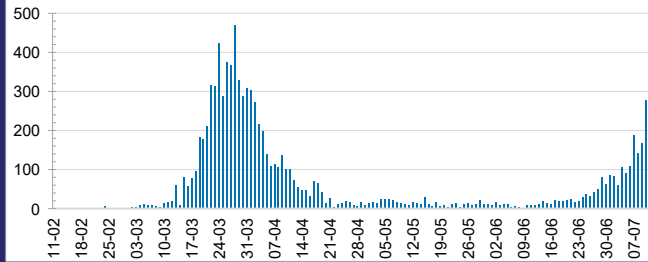


**TOTAL TESTS
CONDUCTED**

0.3% POSITIVE

ACT	NSW	NT	QLD
36,632	1,039,385	16,962	421,738
POSITIVE	POSITIVE	POSITIVE	POSITIVE
0.3%	0.3%	0.2%	0.3%
SA	TAS	VIC	WA
173,296	57,132	1,125,414	204,929
POSITIVE	POSITIVE	POSITIVE	POSITIVE
0.3%	0.4%	0.3%	0.3%

DAILY NUMBER OF REPORTED CASES

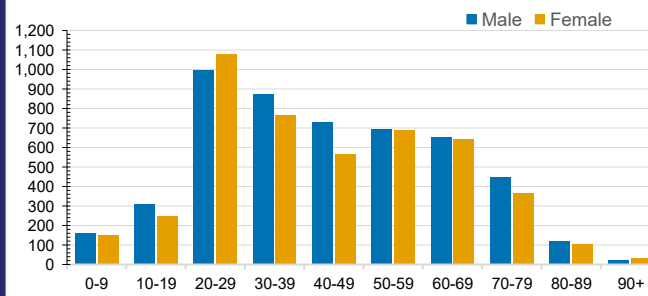


CASES IN AGED CARE SERVICES

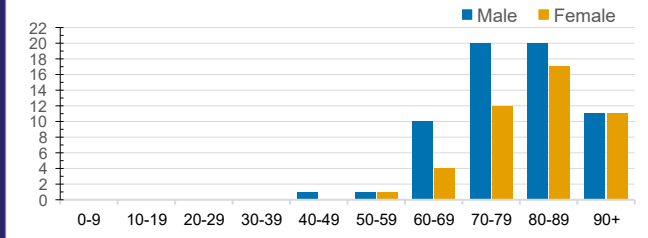
Confirmed Cases	Australia	ACT	NSW	NT	QLD	SA	TAS	VIC	WA
Residential Care Recipients	87 [40 (32)]	0	61 [32 (29)]	0	1 (1)	0	1 (1)	24 [8 (1)]	0
In Home Care Recipients	34 [28 (4)]	0	13 [13]	0	8 [8]	1 [1]	5 [3 (2)]	6 [3 (1)]	1 (1)

Cases in care recipients [recovered] (deaths)

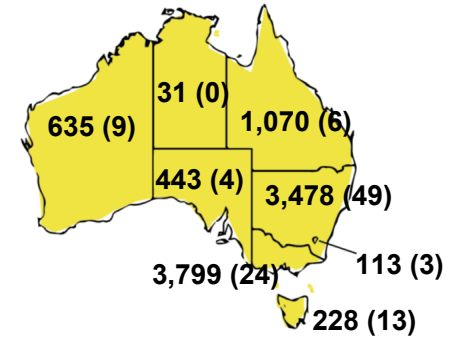
CASES BY AGE GROUP AND SEX



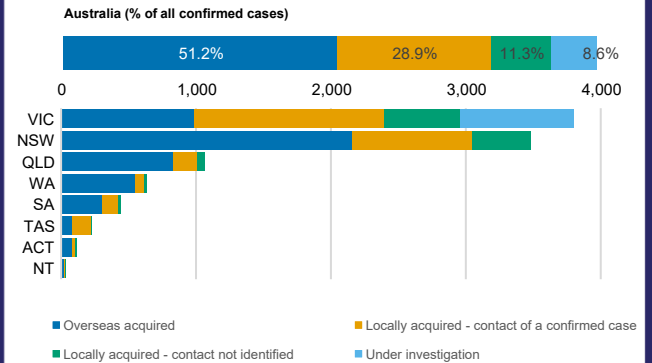
DEATHS BY AGE GROUP AND SEX



CASES (DEATHS) BY STATE AND TERRITORIES



CASES BY SOURCE OF INFECTION



PUBLIC HEALTH RESPONSE MEASURE

