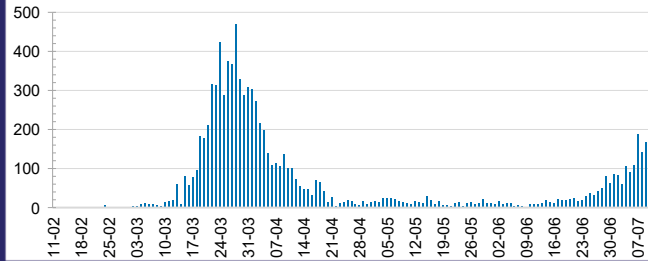




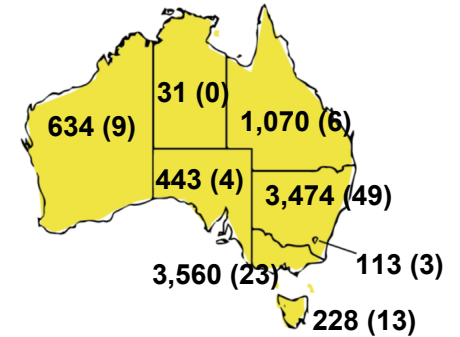
CURRENT STATUS OF CONFIRMED CASES



DAILY NUMBER OF REPORTED CASES



CASES (DEATHS) BY STATE AND TERRITORIES



16

CURRENT CASES
INTENSIVE CARE UNITS (ICU)



ACT	NSW	NT	QLD	SA	TAS	VIC	WA
0	1	0	0	0	0	15	0

55

CURRENT CASES
ADMITTED TO HOSPITALS



ACT	NSW	NT	QLD	SA	TAS	VIC	WA
0	3	2	1	0	0	49	0

3,021,493

0.3% POSITIVE

TOTAL TESTS
CONDUCTED



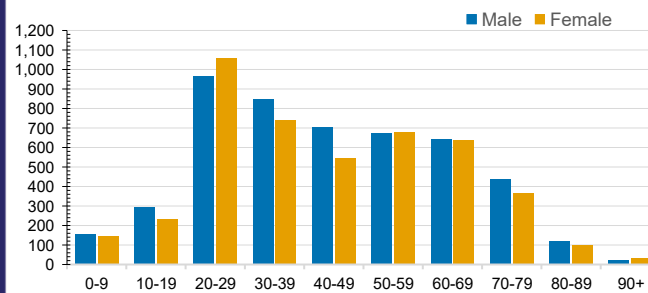
ACT	NSW	NT	QLD
35,872	1,024,410	16,734	417,970
POSITIVE	POSITIVE	POSITIVE	POSITIVE
0.3%	0.3%	0.2%	0.3%
SA	TAS	VIC	WA
169,757	56,602	1,095,219	204,929
POSITIVE	POSITIVE	POSITIVE	POSITIVE
0.3%	0.4%	0.3%	0.3%

CASES IN AGED CARE SERVICES

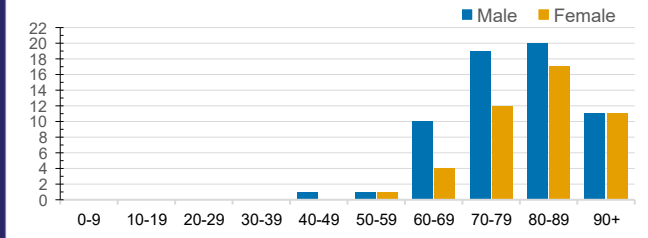
Confirmed Cases	Australia	ACT	NSW	NT	QLD	SA	TAS	VIC	WA
Residential Care Recipients	76 [40] (32)	0	61 [32] (29)	0	1 (1)	0	1 (1)	13 [8] (1)	0
In Home Care Recipients	34 [28] (4)	0	13 [13] (0)	0	8 [8] (0)	1 [1] (0)	5 [3] (2)	6 [3] (1)	1 (1)

Cases in care recipients [recovered] (deaths)

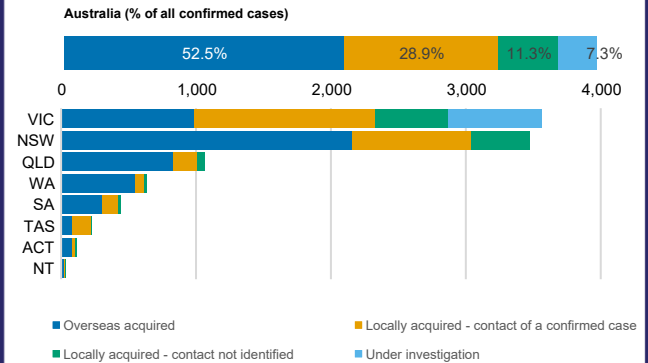
CASES BY AGE GROUP AND SEX



DEATHS BY AGE GROUP AND SEX



CASES BY SOURCE OF INFECTION



PUBLIC HEALTH RESPONSE MEASURE

