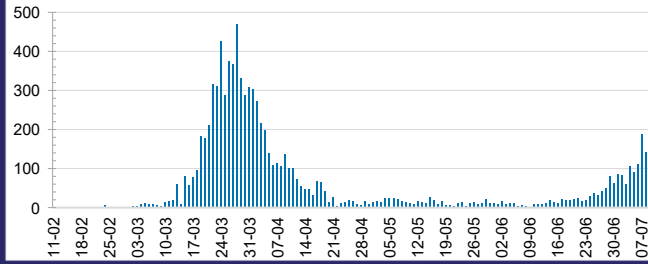




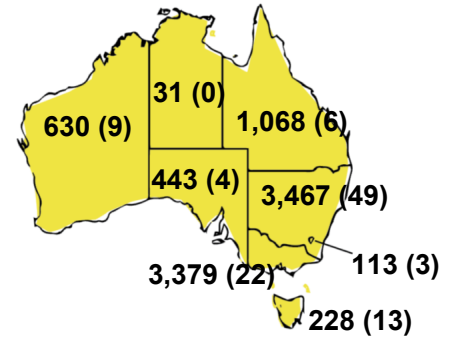
CURRENT STATUS OF CONFIRMED CASES



DAILY NUMBER OF REPORTED CASES



CASES (DEATHS) BY STATE AND TERRITORIES



13



ACT	NSW	NT	QLD	SA	TAS	VIC	WA
0	1	0	0	0	0	12	0

54



ACT	NSW	NT	QLD	SA	TAS	VIC	WA
0	4	2	1	0	0	47	0

2,970,268



0.3% POSITIVE

ACT	NSW	NT	QLD
34,801	1,007,662	16,092	412,838
POSITIVE	POSITIVE	POSITIVE	POSITIVE
0.3%	0.3%	0.2%	0.3%

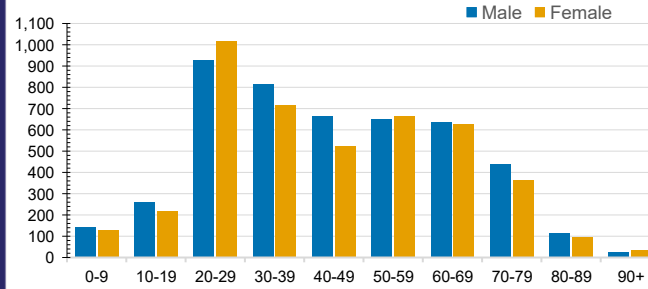
SA	TAS	VIC	WA
169,757	56,139	1,068,050	204,929
POSITIVE	POSITIVE	POSITIVE	POSITIVE
0.3%	0.4%	0.3%	0.3%

CASES IN AGED CARE SERVICES

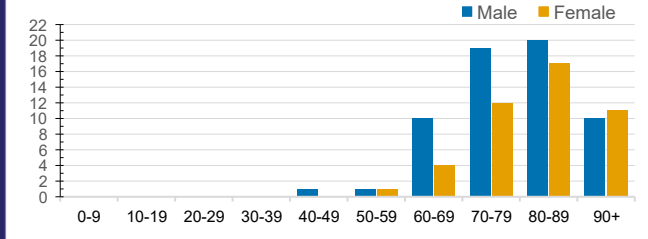
Confirmed Cases	Australia	ACT	NSW	NT	QLD	SA	TAS	VIC	WA
Residential Care Recipients	72 [40 (31)]	0	61 [32 (29)]	0	1 (1)	0	1 (1)	9 [8]	0
In Home Care Recipients	34 [28 (4)]	0	13 [13]	0	8 [8]	1 [1]	5 [3 (2)]	6 [3 (1)]	1 (1)

Cases in care recipients [recovered] (deaths)

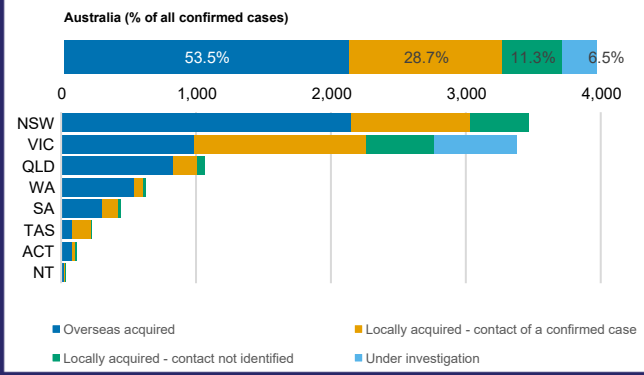
CASES BY AGE GROUP AND SEX



DEATHS BY AGE GROUP AND SEX



CASES BY SOURCE OF INFECTION



PUBLIC HEALTH RESPONSE MEASURE

