



### CURRENT STATUS OF CONFIRMED CASES

7,267

Total cases

102

Total deaths

6,720

Cases recovered

2

CURRENT CASES  
INTENSIVE CARE UNITS (ICU)

ACT	NSW	NT	QLD	SA	TAS	VIC	WA
0	0	0	1	0	0	1	0

19

CURRENT CASES  
ADMITTED TO HOSPITALS

ACT	NSW	NT	QLD	SA	TAS	VIC	WA
0	9	0	2	0	1	7	0

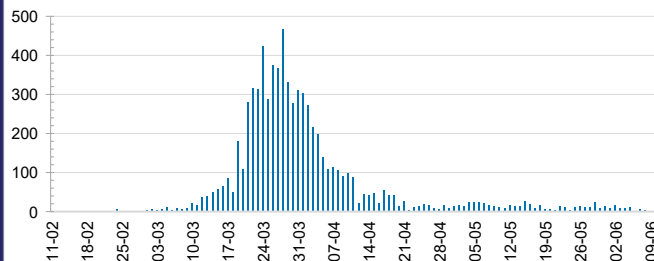
1,650,684

0.4% POSITIVE

TOTAL TESTS  
CONDUCTED

ACT	NSW	NT	QLD
20,975	575,856	9,558	224,050
POSITIVE	POSITIVE	POSITIVE	POSITIVE
0.5%	0.5%	0.3%	0.5%
SA	TAS	VIC	WA
116,561	33,398	547,899	122,387
POSITIVE	POSITIVE	POSITIVE	POSITIVE
0.4%	0.7%	0.3%	0.5%

### DAILY NUMBER OF REPORTED CASES

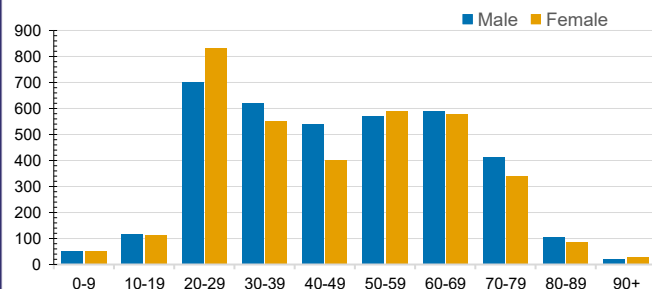


### CASES IN AGED CARE SERVICES

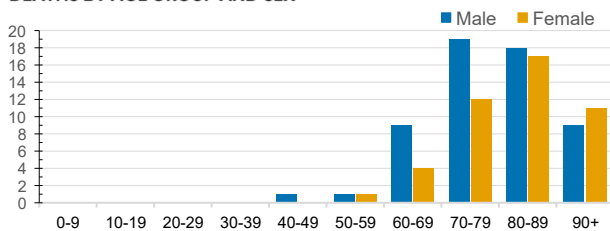
Confirmed Cases	Australia	ACT	NSW	NT	QLD	SA	TAS	VIC	WA
Residential Care Recipients	68 [37] (27)	0	61 [34] (25)	0	1 (1)	0	1 (1)	5 [3]	0
In Home Care Recipients	31 [28] (3)	0	13 [13]	0	8 [8]	1 [1]	5 [3] (2)	3 [3]	1 (1)

Cases in care recipients [recovered] (deaths)

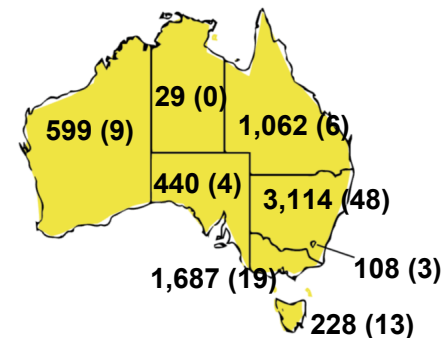
### CASES BY AGE GROUP AND SEX



### DEATHS BY AGE GROUP AND SEX

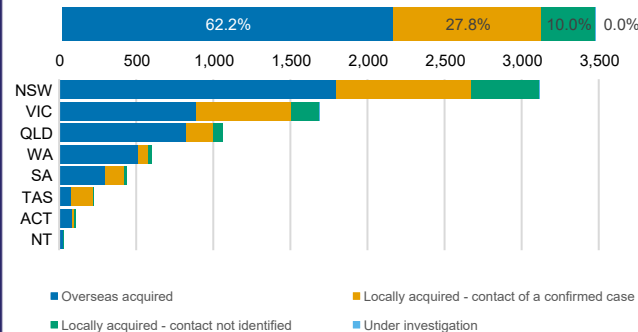


### CASES (DEATHS) BY STATE AND TERRITORIES



### CASES BY SOURCE OF INFECTION

Australia (% of all confirmed cases)



### PUBLIC HEALTH RESPONSE MEASURE

Proportion of total cases under investigation

