



#### CURRENT STATUS OF CONFIRMED CASES

7,255

Total cases

102

Total deaths

6,693

Cases recovered

4

CURRENT CASES  
INTENSIVE CARE UNITS (ICU)

ACT	NSW	NT	QLD	SA	TAS	VIC	WA
0	0	0	1	0	0	3	0

21

CURRENT CASES  
ADMITTED TO HOSPITALS

ACT	NSW	NT	QLD	SA	TAS	VIC	WA
0	9	0	2	0	2	8	0

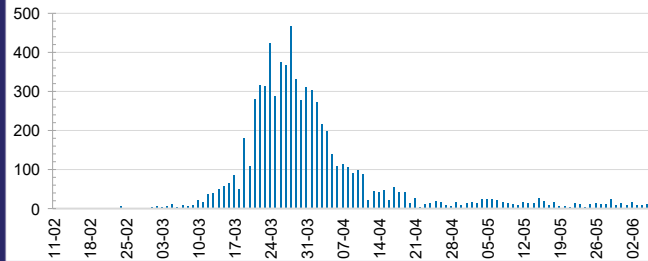
1,590,588

0.5% POSITIVE

TOTAL TESTS  
CONDUCTED

ACT	NSW	NT	QLD
20,132	555,956	9,330	216,458
POSITIVE	POSITIVE	POSITIVE	POSITIVE
0.5%	0.6%	0.3%	0.5%
SA	TAS	VIC	WA
113,503	32,283	530,816	112,110
POSITIVE	POSITIVE	POSITIVE	POSITIVE
0.4%	0.7%	0.3%	0.5%

#### DAILY NUMBER OF REPORTED CASES

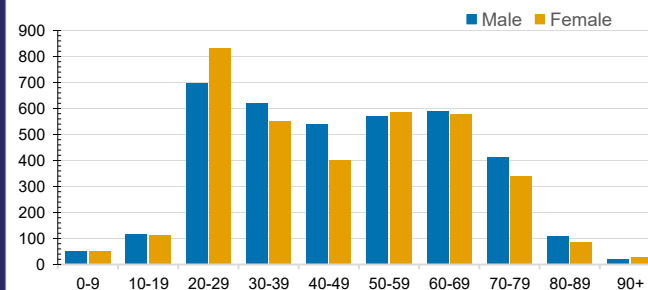


#### CASES IN AGED CARE SERVICES

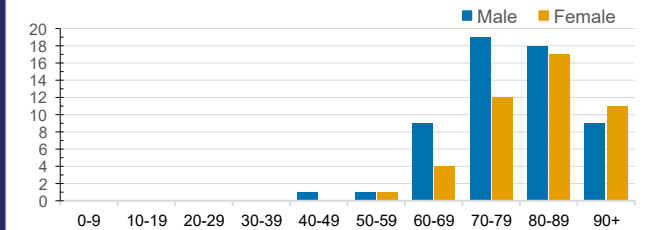
Confirmed Cases	Australia	ACT	NSW	NT	QLD	SA	TAS	VIC	WA
Residential Care Recipients	67 [37] (27)	0	61 [34] (25)	0	1 (1)	0	1 (1)	4 [3]	0
In Home Care Recipients	31 [28] (3)	0	13 [13]	0	8 [8]	1 [1]	5 [3] (2)	3 [3]	1 (1)

Cases in care recipients [recovered] (deaths)

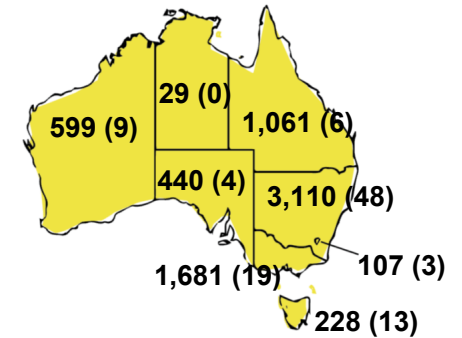
#### CASES BY AGE GROUP AND SEX



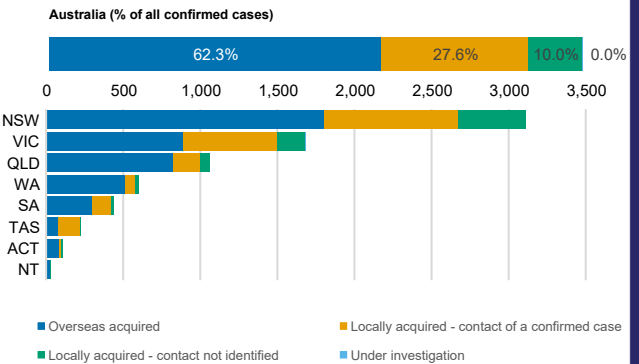
#### DEATHS BY AGE GROUP AND SEX



#### CASES (DEATHS) BY STATE AND TERRITORIES



#### CASES BY SOURCE OF INFECTION



#### PUBLIC HEALTH RESPONSE MEASURE

Proportion of total cases under investigation

