




CURRENT STATUS OF CONFIRMED CASES

**7,229** **102** **6,640**


Total cases Total deaths Cases recovered

**5** CURRENT CASES INTENSIVE CARE UNITS (ICU)




ACT	NSW	NT	QLD	SA	TAS	VIC	WA
0	2	0	1	0	0	2	0

**25** CURRENT CASES ADMITTED TO HOSPITALS



ACT	NSW	NT	QLD	SA	TAS	VIC	WA
0	11	0	2	0	2	9	1

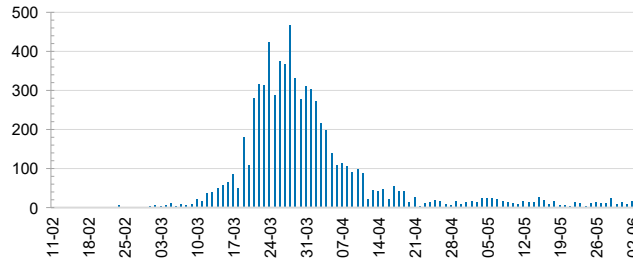
**1,512,700** **0.5% POSITIVE** TOTAL TESTS CONDUCTED



ACT	NSW	NT	QLD
18,899	521,669	8,591	204,258
POSITIVE	POSITIVE	POSITIVE	POSITIVE
0.6%	0.6%	0.3%	0.5%

SA	TAS	VIC	WA
104,548	30,316	526,507	97,912
POSITIVE	POSITIVE	POSITIVE	POSITIVE
0.4%	0.8%	0.3%	0.6%

DAILY NUMBER OF REPORTED CASES

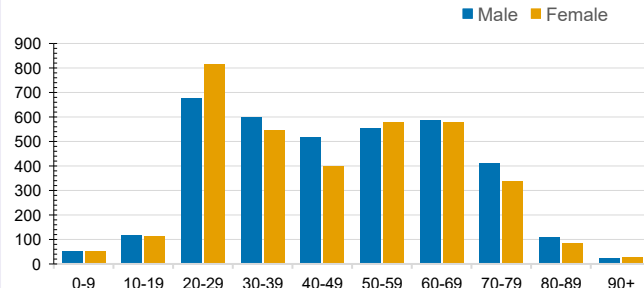


CASES IN AGED CARE SERVICES

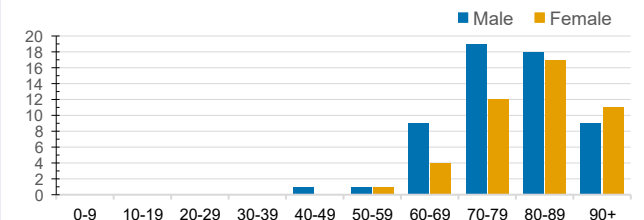
Confirmed Cases	Australia	ACT	NSW	NT	QLD	SA	TAS	VIC	WA
Residential Care Recipients	67 [36 (27)]	0	61 [34 (25)]	0	1 (1)	0	1 (1)	4 [2]	0
In Home Care Recipients	31 [27 (3)]	0	13 [13]	0	8 [8]	1 [1]	5 [2 (2)]	3 [3]	1 (1)

Cases in care recipients [recovered] (deaths)

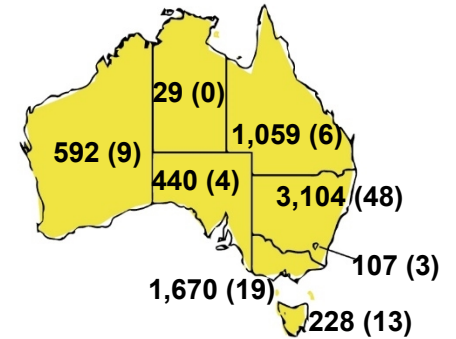
CASES BY AGE GROUP AND SEX



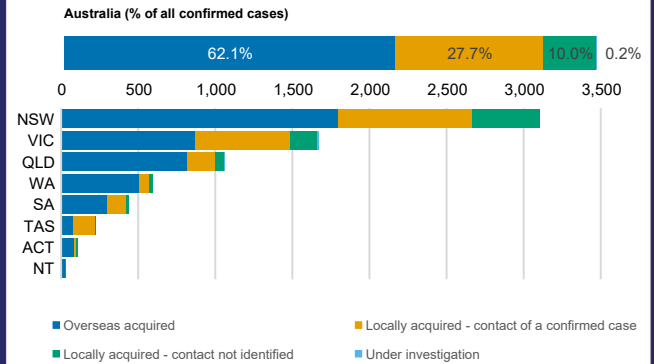
DEATHS BY AGE GROUP AND SEX



CASES (DEATHS) BY STATE AND TERRITORIES



CASES BY SOURCE OF INFECTION



PUBLIC HEALTH RESPONSE MEASURE

