



CURRENT STATUS OF CONFIRMED CASES

7,221

Total cases

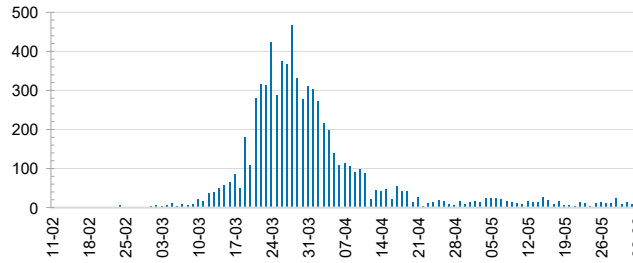
102

Total deaths

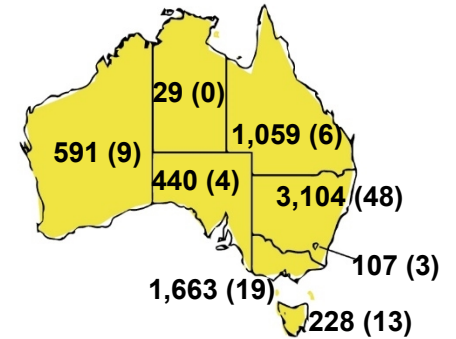
6,625

Cases recovered

DAILY NUMBER OF REPORTED CASES



CASES (DEATHS) BY STATE AND TERRITORIES

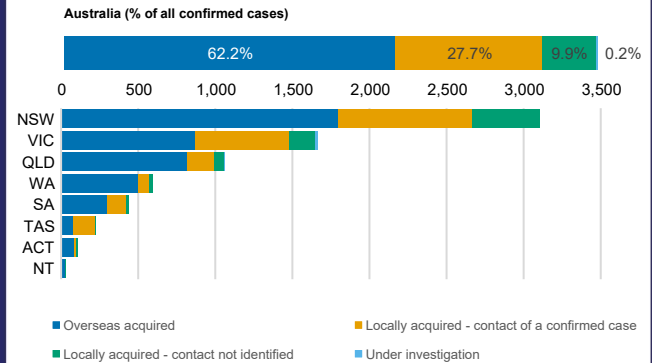


CASES IN AGED CARE SERVICES

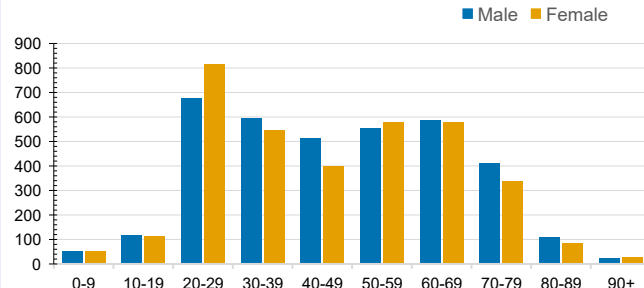
Confirmed Cases	Australia	ACT	NSW	NT	QLD	SA	TAS	VIC	WA
Residential Care Recipients	67 [35 (27)]	0	61 [34 (25)]	0	1 (1)	0	1 (1)	4 [1]	0
In Home Care Recipients	31 [27 (3)]	0	13 [13]	0	8 [8]	1 [1]	5 [2 (2)]	3 [3]	1 (1)

Cases in care recipients [recovered] (deaths)

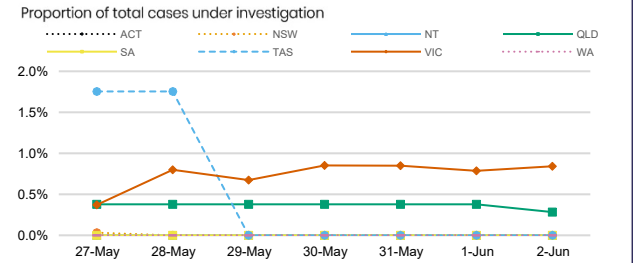
CASES BY SOURCE OF INFECTION



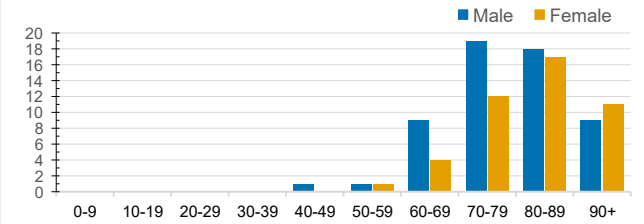
CASES BY AGE GROUP AND SEX



PUBLIC HEALTH RESPONSE MEASURE



DEATHS BY AGE GROUP AND SEX



4

CURRENT CASES INTENSIVE CARE UNITS (ICU)

ACT	NSW	NT	QLD	SA	TAS	VIC	WA
0	1	0	1	0	0	2	0

26

CURRENT CASES ADMITTED TO HOSPITALS

ACT	NSW	NT	QLD	SA	TAS	VIC	WA
0	11	0	2	0	2	9	2

1,490,387

0.5% POSITIVE

TOTAL TESTS CONDUCTED

ACT	NSW	NT	QLD
18,634	514,651	8,406	200,391
POSITIVE	POSITIVE	POSITIVE	POSITIVE
0.6%	0.6%	0.3%	0.5%

SA	TAS	VIC	WA
102,388	29,610	521,359	94,948
POSITIVE	POSITIVE	POSITIVE	POSITIVE
0.4%	0.8%	0.3%	0.6%