



CURRENT STATUS OF CONFIRMED CASES

7,347

Total cases

102

Total deaths

6,856

Cases recovered

3

CURRENT CASES
INTENSIVE CARE UNITS (ICU)

ACT	NSW	NT	QLD	SA	TAS	VIC	WA
0	0	0	1	0	0	2	0

17

CURRENT CASES
ADMITTED TO HOSPITALS

ACT	NSW	NT	QLD	SA	TAS	VIC	WA
0	10	0	1	0	0	6	0

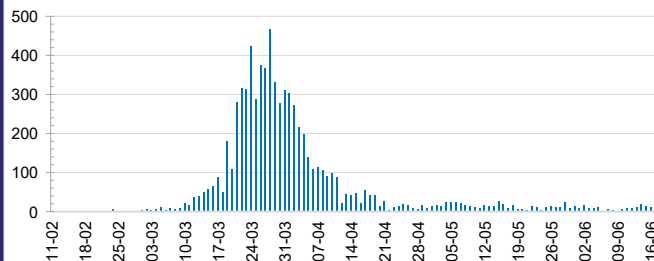
1,848,347

0.4% POSITIVE

TOTAL TESTS
CONDUCTED

ACT	NSW	NT	QLD
23,837	649,337	10,665	254,554
POSITIVE	POSITIVE	POSITIVE	POSITIVE
0.5%	0.5%	0.3%	0.4%
SA	TAS	VIC	WA
127,815	38,826	599,895	143,418
POSITIVE	POSITIVE	POSITIVE	POSITIVE
0.3%	0.6%	0.3%	0.4%

DAILY NUMBER OF REPORTED CASES

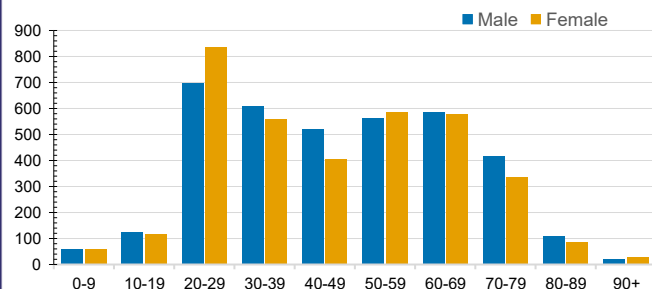


CASES IN AGED CARE SERVICES

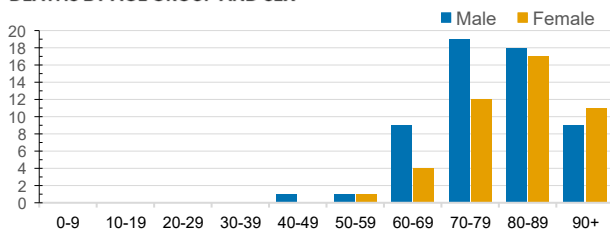
Confirmed Cases	Australia	ACT	NSW	NT	QLD	SA	TAS	VIC	WA
Residential Care Recipients	68 [39] (29)	0	61 [34] (27)	0	1 (1)	0	1 (1)	5 [5]	0
In Home Care Recipients	31 [28] (3)	0	13 [13]	0	8 [8]	1 [1]	5 [3] (2)	3 [3]	1 (1)

Cases in care recipients [recovered] (deaths)

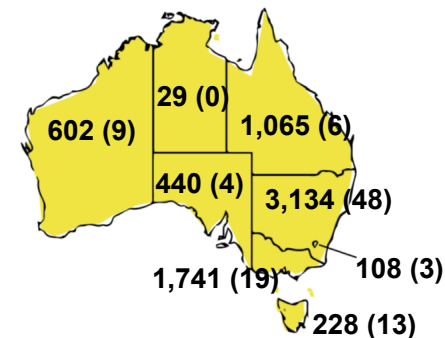
CASES BY AGE GROUP AND SEX



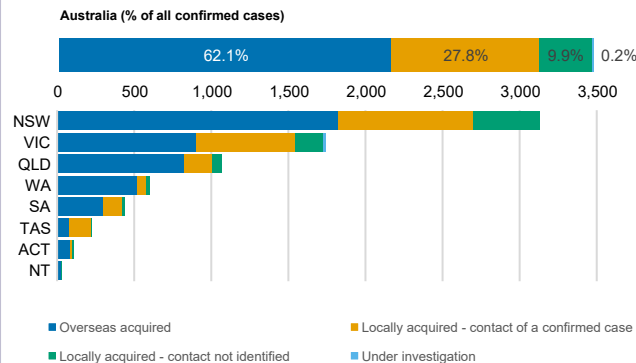
DEATHS BY AGE GROUP AND SEX



CASES (DEATHS) BY STATE AND TERRITORIES



CASES BY SOURCE OF INFECTION



PUBLIC HEALTH RESPONSE MEASURE

Proportion of total cases under investigation

