



#### CURRENT STATUS OF CONFIRMED CASES

7,320

Total cases

102

Total deaths

6,838

Cases recovered

3

CURRENT CASES  
INTENSIVE CARE UNITS (ICU)

ACT	NSW	NT	QLD	SA	TAS	VIC	WA
0	0	0	1	0	0	2	0

16

CURRENT CASES  
ADMITTED TO HOSPITALS

ACT	NSW	NT	QLD	SA	TAS	VIC	WA
0	9	0	1	0	0	6	0

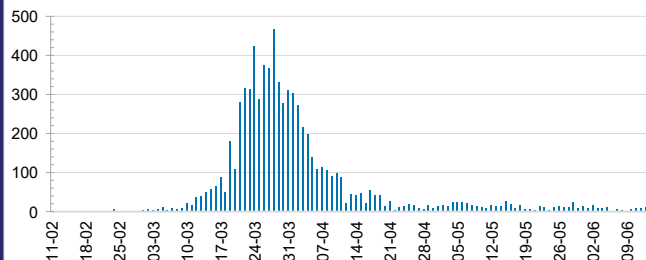
1,812,353

0.4% POSITIVE

TOTAL TESTS  
CONDUCTED

ACT	NSW	NT	QLD
23,217	634,241	10,464	249,627
POSITIVE	POSITIVE	POSITIVE	POSITIVE
0.5%	0.5%	0.3%	0.4%
SA	TAS	VIC	WA
125,732	36,314	590,853	141,905
POSITIVE	POSITIVE	POSITIVE	POSITIVE
0.3%	0.6%	0.3%	0.4%

#### DAILY NUMBER OF REPORTED CASES

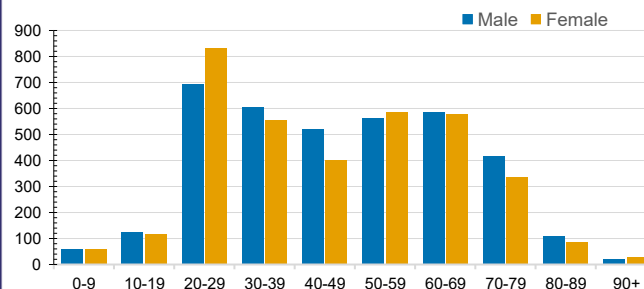


#### CASES IN AGED CARE SERVICES

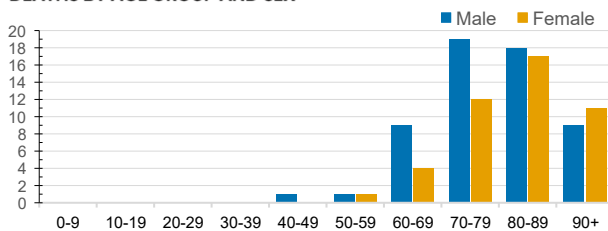
Confirmed Cases	Australia	ACT	NSW	NT	QLD	SA	TAS	VIC	WA
Residential Care Recipients	68 [39] (29)	0	61 [34] (27)	0	1 (1)	0	1 (1)	5 [5]	0
In Home Care Recipients	31 [28] (3)	0	13 [13]	0	8 [8]	1 [1]	5 [3] (2)	3 [3]	1 (1)

Cases in care recipients [recovered] (deaths)

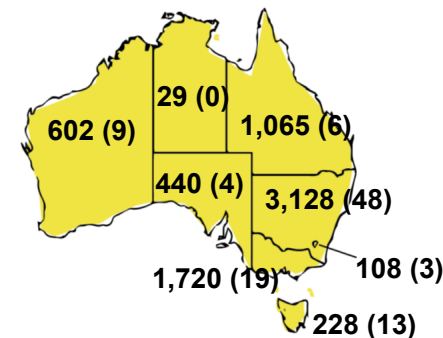
#### CASES BY AGE GROUP AND SEX



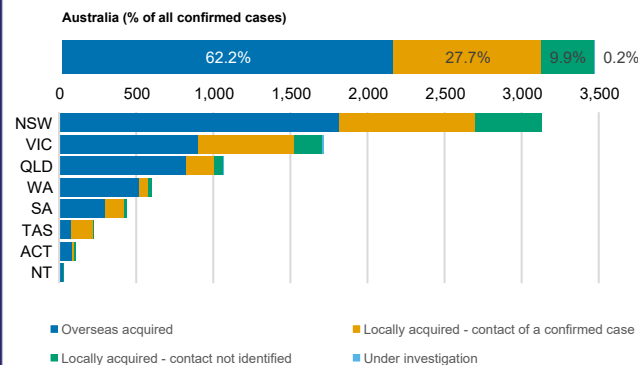
#### DEATHS BY AGE GROUP AND SEX



#### CASES (DEATHS) BY STATE AND TERRITORIES



#### CASES BY SOURCE OF INFECTION



#### PUBLIC HEALTH RESPONSE MEASURE

Proportion of total cases under investigation

