



CURRENT STATUS OF CONFIRMED CASES

7,290

Total cases

102

Total deaths

6,783

Cases recovered

2

CURRENT CASES
INTENSIVE CARE UNITS (ICU)

ACT	NSW	NT	QLD	SA	TAS	VIC	WA
0	0	0	1	0	0	1	0

17

CURRENT CASES
ADMITTED TO HOSPITALS

ACT	NSW	NT	QLD	SA	TAS	VIC	WA
0	10	0	2	0	0	5	0

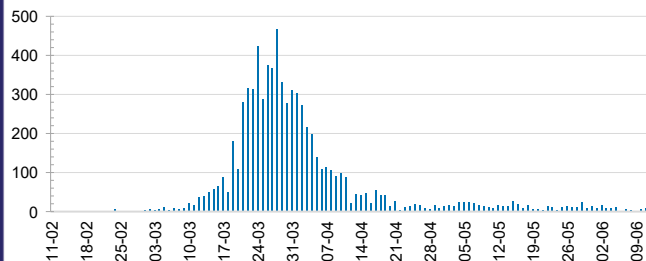
1,745,550

0.4% POSITIVE

TOTAL TESTS
CONDUCTED

ACT	NSW	NT	QLD
22,492	606,525	10,217	240,861
POSITIVE	POSITIVE	POSITIVE	POSITIVE
0.5%	0.5%	0.3%	0.4%
SA	TAS	VIC	WA
122,481	35,498	572,985	134,491
POSITIVE	POSITIVE	POSITIVE	POSITIVE
0.4%	0.6%	0.3%	0.4%

DAILY NUMBER OF REPORTED CASES

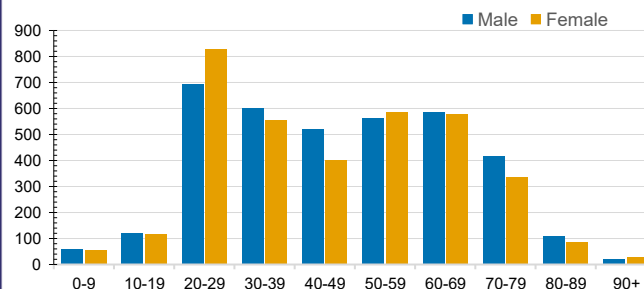


CASES IN AGED CARE SERVICES

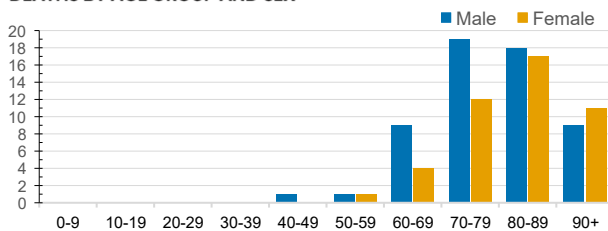
Confirmed Cases	Australia	ACT	NSW	NT	QLD	SA	TAS	VIC	WA
Residential Care Recipients	68 [39] (29)	0	61 [34] (27)	0	1 (1)	0	1 (1)	5 [5]	0
In Home Care Recipients	31 [28] (3)	0	13 [13]	0	8 [8]	1 [1]	5 [3] (2)	3 [3]	1 (1)

Cases in care recipients [recovered] (deaths)

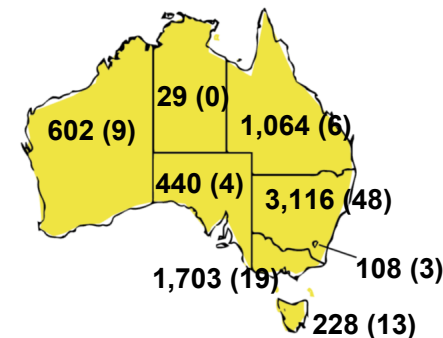
CASES BY AGE GROUP AND SEX



DEATHS BY AGE GROUP AND SEX

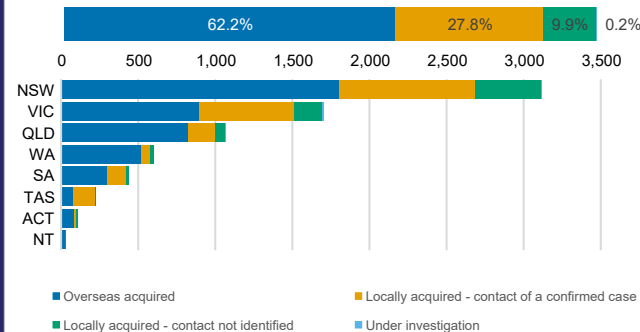


CASES (DEATHS) BY STATE AND TERRITORIES



CASES BY SOURCE OF INFECTION

Australia (% of all confirmed cases)



PUBLIC HEALTH RESPONSE MEASURE

Proportion of total cases under investigation

