



CURRENT STATUS OF CONFIRMED CASES

7,276

Total cases

102

Total deaths

6,744

Cases recovered

3

CURRENT CASES
INTENSIVE CARE UNITS (ICU)

ACT	NSW	NT	QLD	SA	TAS	VIC	WA
0	0	0	1	0	0	2	0

20

CURRENT CASES
ADMITTED TO HOSPITALS

ACT	NSW	NT	QLD	SA	TAS	VIC	WA
0	9	0	1	0	1	9	0

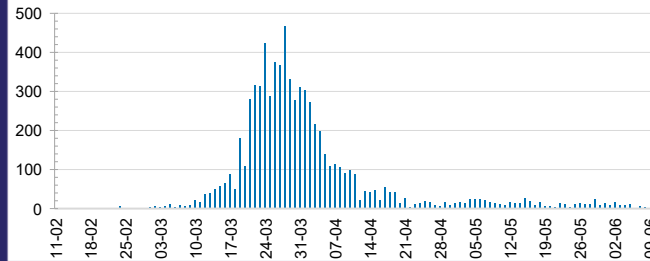
1,679,954

0.4% POSITIVE

TOTAL TESTS
CONDUCTED

ACT	NSW	NT	QLD
21,411	581,559	9,747	230,792
POSITIVE	POSITIVE	POSITIVE	POSITIVE
0.5%	0.5%	0.3%	0.5%
SA	TAS	VIC	WA
117,847	34,054	557,844	126,700
POSITIVE	POSITIVE	POSITIVE	POSITIVE
0.4%	0.7%	0.3%	0.5%

DAILY NUMBER OF REPORTED CASES

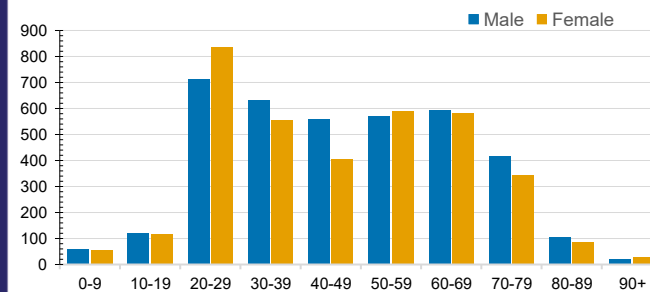


CASES IN AGED CARE SERVICES

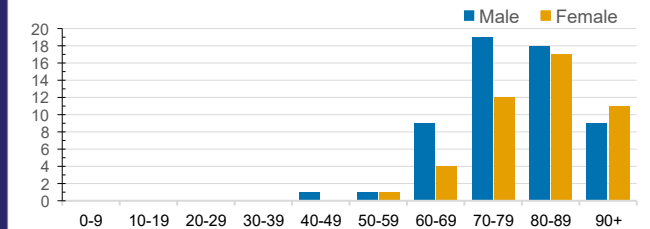
Confirmed Cases	Australia	ACT	NSW	NT	QLD	SA	TAS	VIC	WA
Residential Care Recipients	68 [38] (27)	0	61 [34] (25)	0	1 (1)	0	1 (1)	5 [4]	0
In Home Care Recipients	31 [28] (3)	0	13 [13]	0	8 [8]	1 [1]	5 [3] (2)	3 [3]	1 (1)

Cases in care recipients [recovered] (deaths)

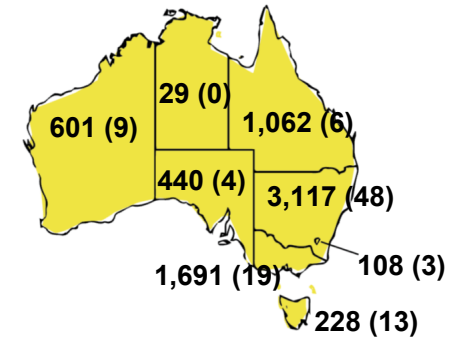
CASES BY AGE GROUP AND SEX



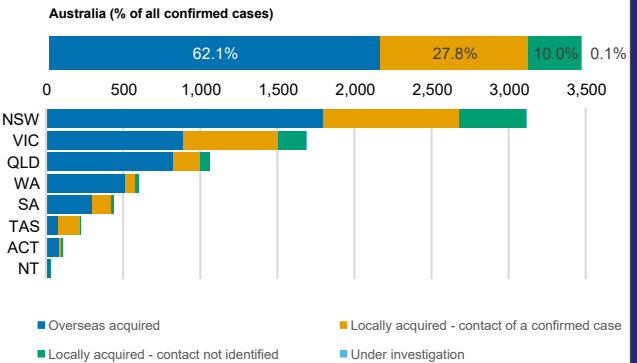
DEATHS BY AGE GROUP AND SEX



CASES (DEATHS) BY STATE AND TERRITORIES



CASES BY SOURCE OF INFECTION



PUBLIC HEALTH RESPONSE MEASURE

