



CURRENT STATUS OF CONFIRMED CASES

6,914

Total cases

97

Total deaths

6,079

Cases recovered

21

CURRENT CASES  
INTENSIVE CARE UNITS (ICU)

ACT	NSW	NT	QLD	SA	TAS	VIC	WA
0	10	0	3	0	1	6	1

56

CURRENT CASES  
ADMITTED TO HOSPITALS

ACT	NSW	NT	QLD	SA	TAS	VIC	WA
0	23	2	9	2	8	8	4

757,250

0.9% POSITIVE

TOTAL TESTS  
CONDUCTED

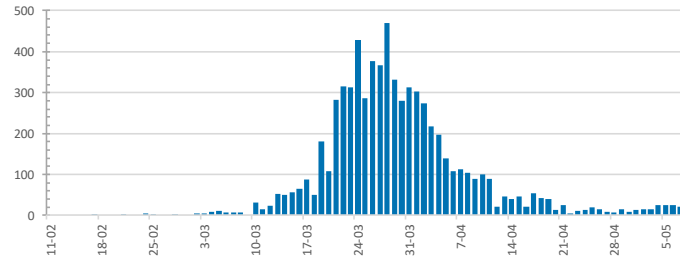
ACT	NSW	NT	QLD
10,957	281,257	5,267	129,195

POSITIVE	POSITIVE	POSITIVE	POSITIVE
1.0%	1.1%	0.6%	0.8%

SA	TAS	VIC	WA
66,677	17,807	193,265	52,825

POSITIVE	POSITIVE	POSITIVE	POSITIVE
0.7%	1.3%	0.8%	1.0%

DAILY NUMBER OF REPORTED CASES

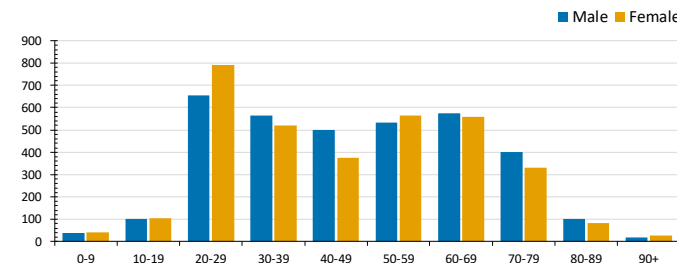


CASES IN AGED CARE SERVICES

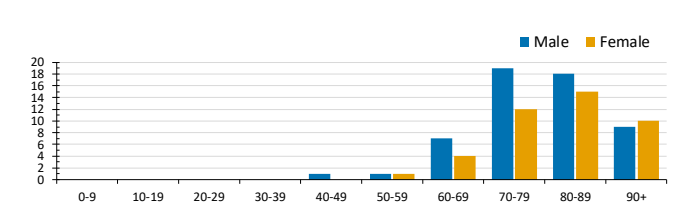
Confirmed Cases	Australia	ACT	NSW	NT	Qld	SA	Tas	Vic	WA
Residential Care Recipients	63 [16] (26)	0	61 [16] (24)	0	1 (1)	0	1 (1)	0	0
In Home Care Recipients	31 [19] (3)	0	13 [8]	0	8 [7]	1 [1]	5 (2)	3 [3]	1 (1)

Cases in care recipients [recovered] (deaths)

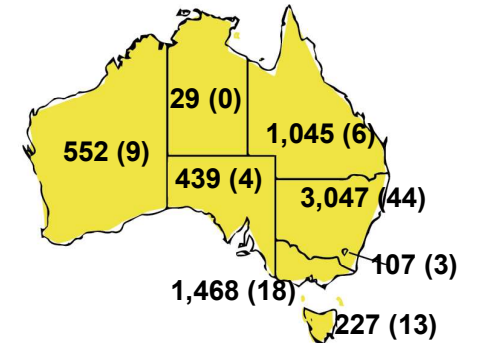
CASES BY AGE GROUP AND SEX



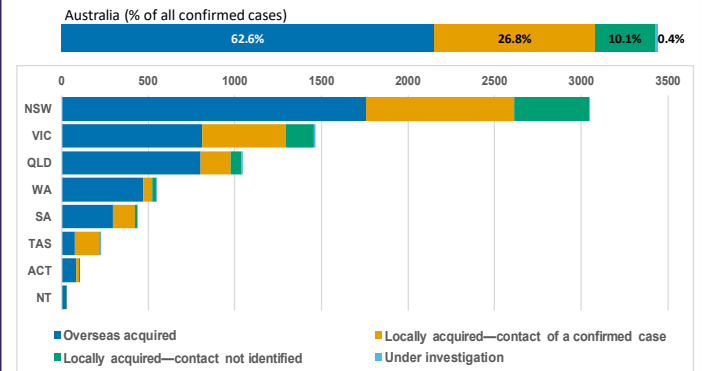
DEATHS BY AGE GROUP AND SEX



CASES (DEATHS) BY STATE AND TERRITORIES



CASES BY SOURCE OF INFECTION



PUBLIC HEALTH RESPONSE MEASURE

Proportion of total cases under investigation

