



CURRENT STATUS OF CONFIRMED CASES

6,849

Total cases

96

Total deaths

5,889

Cases recovered

27

CURRENT CASES
INTENSIVE CARE UNITS (ICU)

ACT	NSW	NT	QLD	SA	TAS	VIC	WA
0	13	0	4	0	1	6	3

66

CURRENT CASES
ADMITTED TO HOSPITALS

ACT	NSW	NT	QLD	SA	TAS	VIC	WA
0	25	3	9	2	8	12	7

664,756

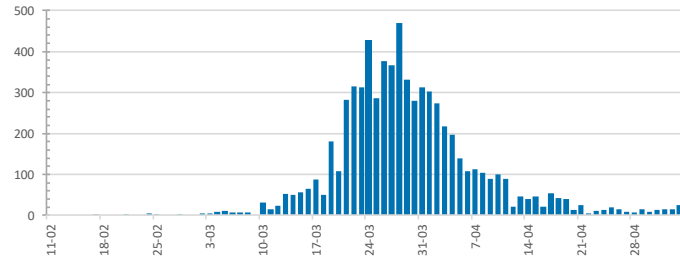
1.0% POSITIVE

TOTAL TESTS
CONDUCTED

ACT	NSW	NT	QLD
9,829	253,995	4,925	117,721
POSITIVE	POSITIVE	POSITIVE	POSITIVE
1.1%	1.2%	0.6%	0.9%

SA	TAS	VIC	WA
62,139	16,017	151,977	48,153
POSITIVE	POSITIVE	POSITIVE	POSITIVE
0.7%	1.4%	0.9%	1.1%

DAILY NUMBER OF REPORTED CASES

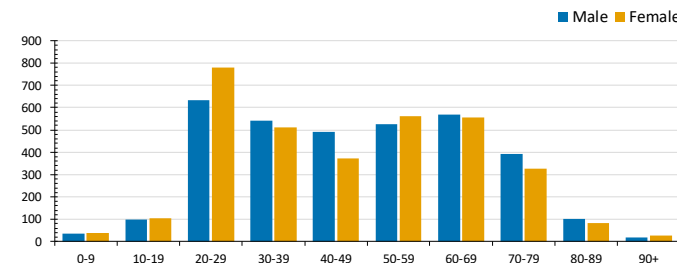


CASES IN AGED CARE SERVICES

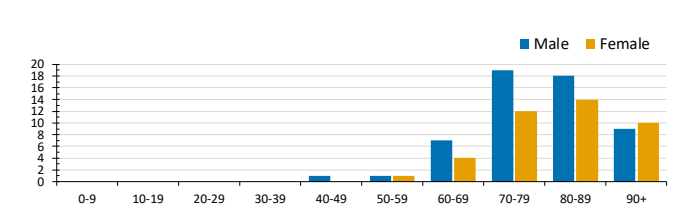
Confirmed Cases	Australia	ACT	NSW	NT	Qld	SA	Tas	Vic	WA
Residential Care Recipients	63 [16] (26)	0	61 [16] (24)	0	1 (1)	0	1 (1)	0	0
In Home Care Recipients	31 [18] (4)	0	14 [8] (1)	0	7 [6]	1 [1]	5 (2)	3 [3]	1 (1)

Cases in care recipients [recovered] (deaths)

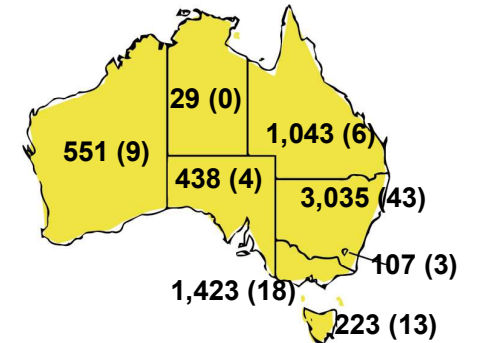
CASES BY AGE GROUP AND SEX



DEATHS BY AGE GROUP AND SEX

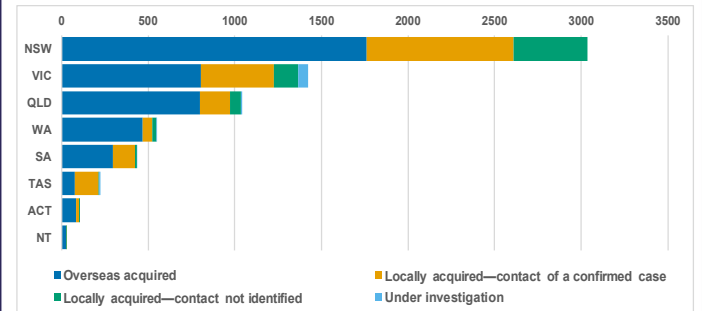


CASES (DEATHS) BY STATE AND TERRITORIES



CASES BY SOURCE OF INFECTION

Australia (% of all confirmed cases)



PUBLIC HEALTH RESPONSE MEASURE

Proportion of total cases under investigation

