



CURRENT STATUS OF CONFIRMED CASES

6,825

Total cases

95

Total deaths

5,859

Cases recovered

28

CURRENT CASES
INTENSIVE CARE UNITS (ICU)

ACT	NSW	NT	QLD	SA	TAS	VIC	WA
0	14	0	4	0	1	6	3

70

CURRENT CASES
ADMITTED TO HOSPITALS

ACT	NSW	NT	QLD	SA	TAS	VIC	WA
0	27	5	9	3	8	11	7

650,214

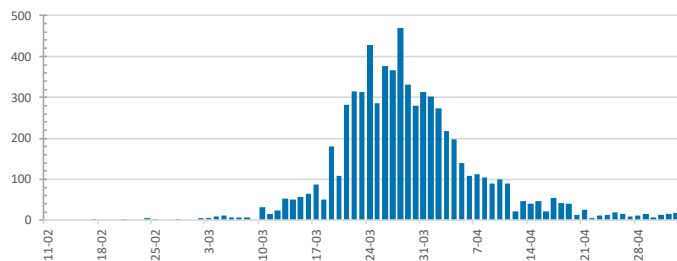
1.0% POSITIVE

TOTAL TESTS
CONDUCTED

ACT	NSW	NT	QLD
9,628	248,699	4,855	116,650
POSITIVE	POSITIVE	POSITIVE	POSITIVE
1.1%	1.2%	0.6%	0.9%

SA	TAS	VIC	WA
61,336	15,356	146,661	47,029
POSITIVE	POSITIVE	POSITIVE	POSITIVE
0.7%	1.5%	1.0%	1.2%

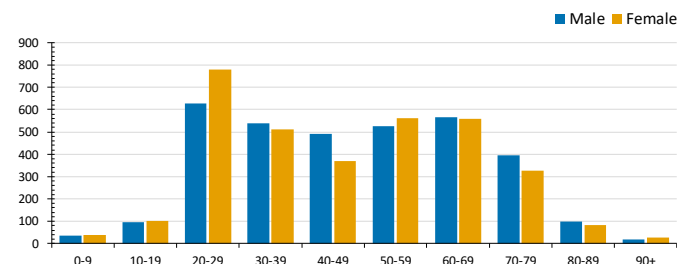
DAILY NUMBER OF REPORTED CASES



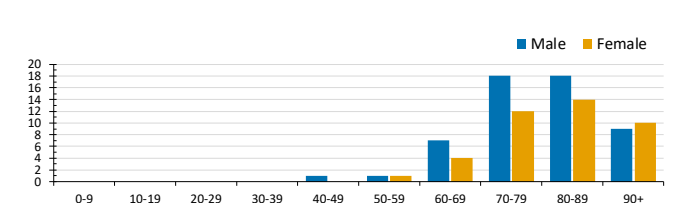
CASES IN AGED CARE SERVICES

Confirmed Cases	Australia	ACT	NSW	NT	QLD	SA	Tas	Vic	WA
Residential Care Recipients	63 [16] (25)	0	61 [16] (23)	0	1 (1)	0	1 (1)	0	0
In Home Care Recipients	31 [18] (4)	0	14 [8] (1)	0	7 [6]	1 [1]	5 (2)	3 [3]	1 (1)
Cases in care recipients [recovered] (deaths)									

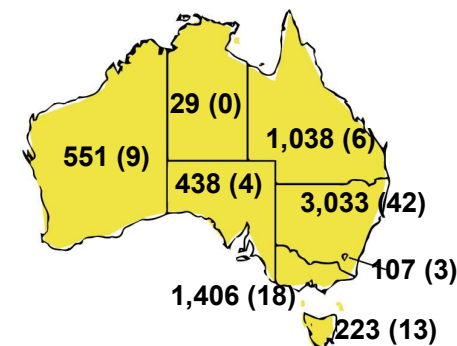
CASES BY AGE GROUP AND SEX



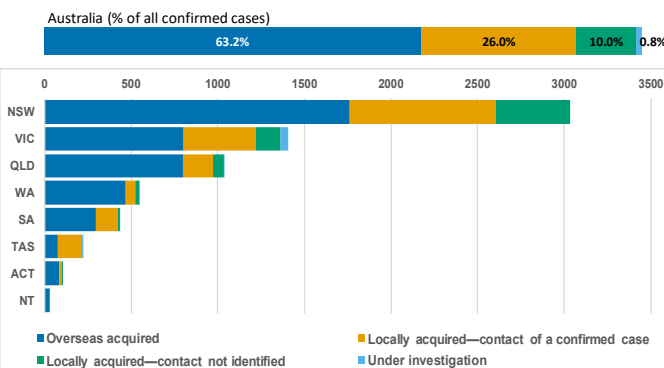
DEATHS BY AGE GROUP AND SEX



CASES (DEATHS) BY STATE AND TERRITORIES



CASES BY SOURCE OF INFECTION



PUBLIC HEALTH RESPONSE MEASURE

Proportion of total cases under investigation

