



CURRENT STATUS OF CONFIRMED CASES

7,195

Total cases

103

Total deaths

6,614

Cases recovered

4

CURRENT CASES
INTENSIVE CARE UNITS (ICU)

ACT	NSW	NT	QLD	SA	TAS	VIC	WA
0	1	0	1	0	0	2	0

21

CURRENT CASES
ADMITTED TO HOSPITALS

ACT	NSW	NT	QLD	SA	TAS	VIC	WA
0	11	0	1	0	2	6	1

1,454,568

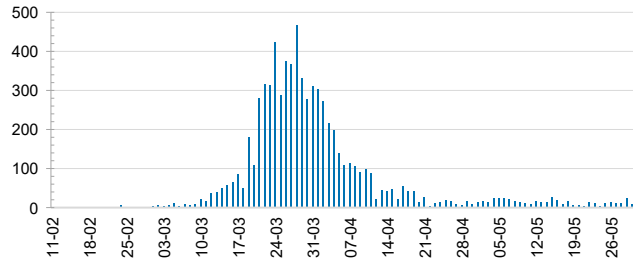
0.5% POSITIVE

TOTAL TESTS
CONDUCTED

ACT	NSW	NT	QLD
18,114	503,464	8,220	195,437
POSITIVE	POSITIVE	POSITIVE	POSITIVE
0.6%	0.6%	0.4%	0.5%

SA	TAS	VIC	WA
99,465	28,647	509,691	91,530
POSITIVE	POSITIVE	POSITIVE	POSITIVE
0.4%	0.8%	0.3%	0.6%

DAILY NUMBER OF REPORTED CASES

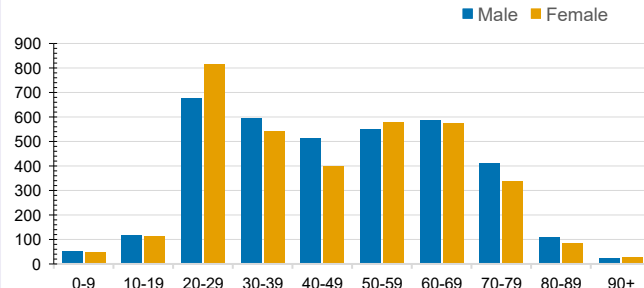


CASES IN AGED CARE SERVICES

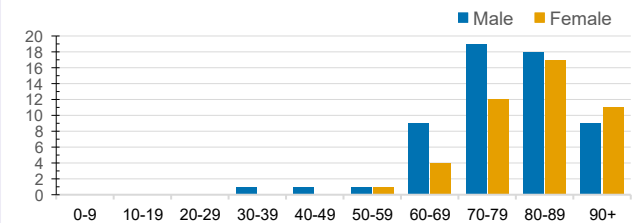
Confirmed Cases	Australia	ACT	NSW	NT	QLD	SA	TAS	VIC	WA
Residential Care Recipients	67 [33] (27)	0	61 [33] (25)	0	1 (1)	0	1 (1)	4	0
In Home Care Recipients	31 [27] (3)	0	13 [13] (0)	0	8 [8] (1)	1 [1] (2)	5 [2] (3)	3 [3] (1)	1 (1)

Cases in care recipients [recovered] (deaths)

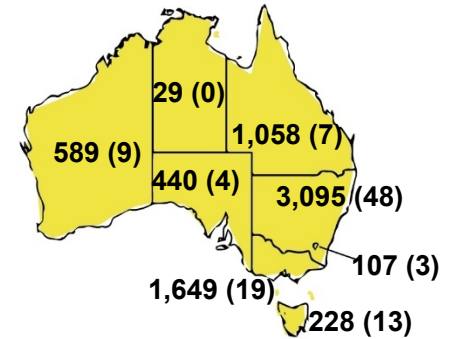
CASES BY AGE GROUP AND SEX



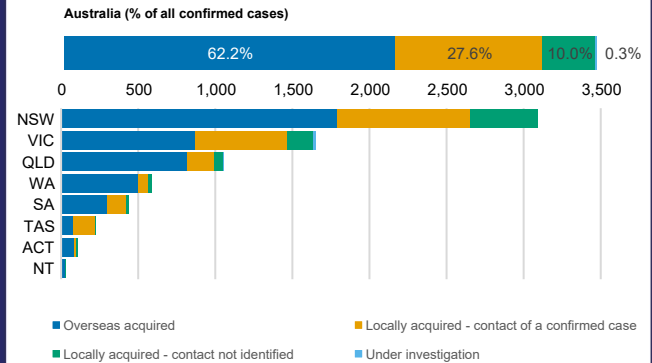
DEATHS BY AGE GROUP AND SEX



CASES (DEATHS) BY STATE AND TERRITORIES



CASES BY SOURCE OF INFECTION



PUBLIC HEALTH RESPONSE MEASURE

