



CURRENT STATUS OF CONFIRMED CASES

7,185

Total cases

103

Total deaths

6,606

Cases recovered

4

CURRENT CASES
INTENSIVE CARE UNITS (ICU)

| ACT | NSW | NT | QLD | SA | TAS | VIC | WA |
|-----|-----|----|-----|----|-----|-----|----|
| 0 | 1 | 0 | 1 | 0 | 0 | 2 | 0 |

22

CURRENT CASES
ADMITTED TO HOSPITALS

| ACT | NSW | NT | QLD | SA | TAS | VIC | WA |
|-----|-----|----|-----|----|-----|-----|----|
| 0 | 12 | 0 | 1 | 0 | 2 | 7 | 0 |

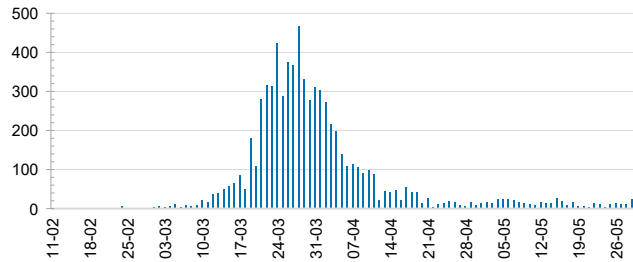
1,428,538

0.5% POSITIVE

TOTAL TESTS
CONDUCTED

| ACT | NSW | NT | QLD |
|----------|----------|----------|----------|
| 17,792 | 493,637 | 8,082 | 192,062 |
| POSITIVE | POSITIVE | POSITIVE | POSITIVE |
| 0.6% | 0.6% | 0.4% | 0.6% |
| SA | TAS | VIC | WA |
| 98,040 | 28,158 | 501,565 | 89,202 |
| POSITIVE | POSITIVE | POSITIVE | POSITIVE |
| 0.4% | 0.8% | 0.3% | 0.7% |

DAILY NUMBER OF REPORTED CASES

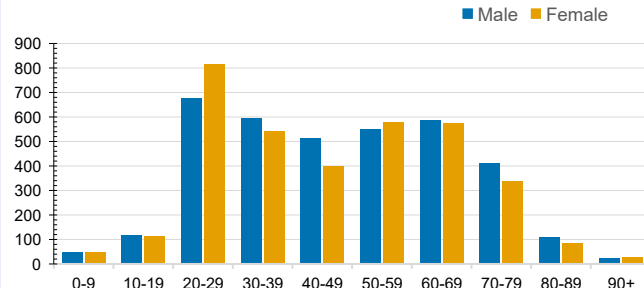


CASES IN AGED CARE SERVICES

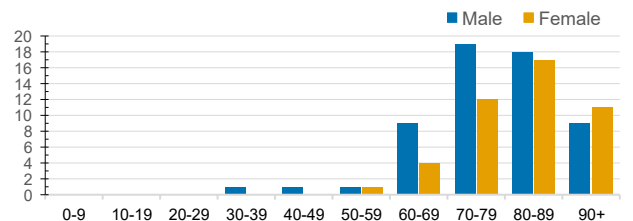
| Confirmed Cases | Australia | ACT | NSW | NT | QLD | SA | TAS | VIC | WA |
|-----------------------------|--------------|-----|--------------|----|-----------|-----------|-----------|-----------|-------|
| Residential Care Recipients | 67 [32] (27) | 0 | 61 [32] (25) | 0 | 1 (1) | 0 | 1 (1) | 4 | 0 |
| In Home Care Recipients | 31 [27] (3) | 0 | 13 [13] (0) | 0 | 8 [8] (1) | 1 [1] (2) | 5 [2] (3) | 3 [3] (1) | 1 (1) |

Cases in care recipients [recovered] (deaths)

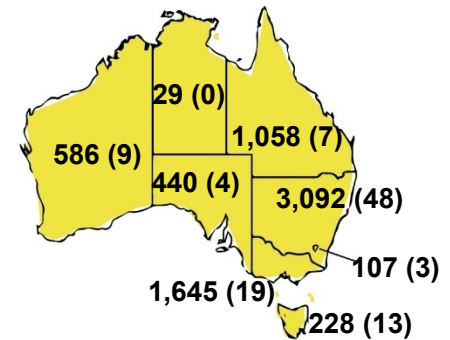
CASES BY AGE GROUP AND SEX



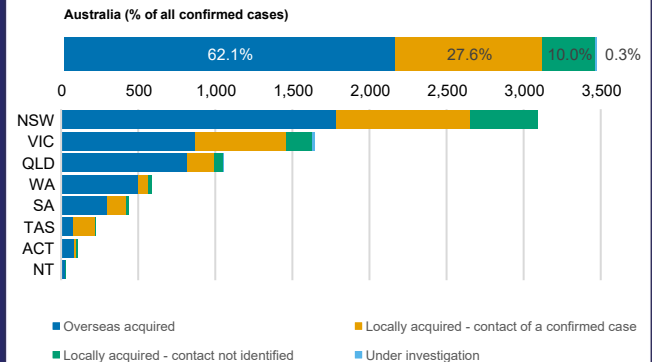
DEATHS BY AGE GROUP AND SEX



CASES (DEATHS) BY STATE AND TERRITORIES



CASES BY SOURCE OF INFECTION



PUBLIC HEALTH RESPONSE MEASURE

