



CURRENT STATUS OF CONFIRMED CASES

7,173

Total cases

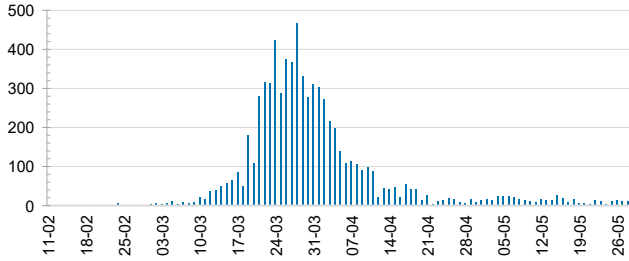
103

Total deaths

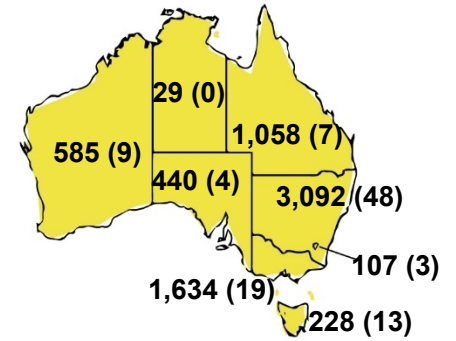
6,582

Cases recovered

DAILY NUMBER OF REPORTED CASES



CASES (DEATHS) BY STATE AND TERRITORIES

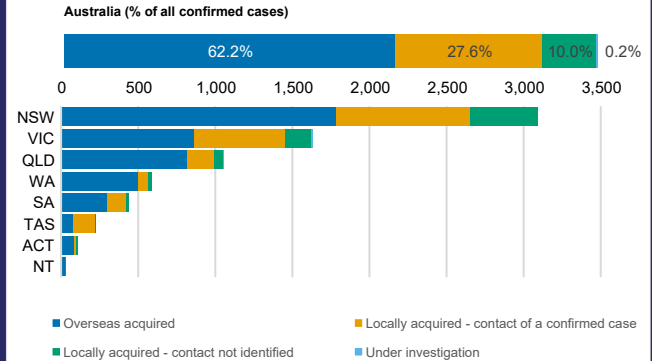


CASES IN AGED CARE SERVICES

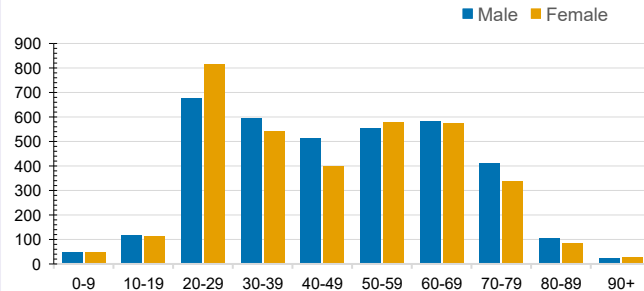
Confirmed Cases	Australia	ACT	NSW	NT	QLD	SA	TAS	VIC	WA
Residential Care Recipients	67 [32] (27)	0	61 [32] (25)	0	1 (1)	0	1 (1)	4	0
In Home Care Recipients	31 [27] (3)	0	13 [13] (0)	0	8 [8] (1)	1 [1] (0)	5 [2] (2)	3 [3] (0)	1 (1)

Cases in care recipients [recovered] (deaths)

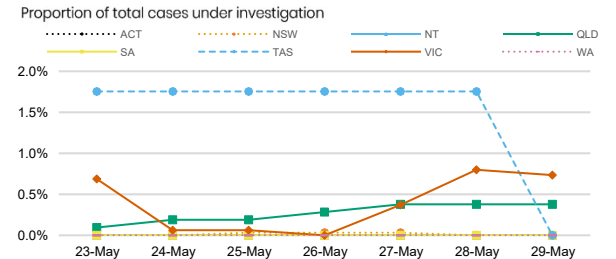
CASES BY SOURCE OF INFECTION



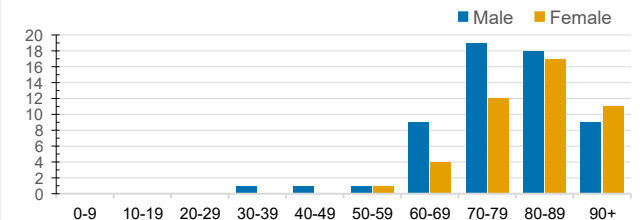
CASES BY AGE GROUP AND SEX



PUBLIC HEALTH RESPONSE MEASURE



DEATHS BY AGE GROUP AND SEX



4

CURRENT CASES
INTENSIVE CARE UNITS (ICU)

ACT	NSW	NT	QLD	SA	TAS	VIC	WA
0	1	0	1	0	0	2	0

23

CURRENT CASES
ADMITTED TO HOSPITALS

ACT	NSW	NT	QLD	SA	TAS	VIC	WA
0	13	0	1	0	2	7	0

1,397,622

0.5% POSITIVE

TOTAL TESTS
CONDUCTED

ACT	NSW	NT	QLD
17,374	484,185	7,918	185,936
POSITIVE	POSITIVE	POSITIVE	POSITIVE
0.6%	0.6%	0.4%	0.6%

SA	TAS	VIC	WA
95,888	27,498	493,085	85,738
POSITIVE	POSITIVE	POSITIVE	POSITIVE
0.5%	0.8%	0.3%	0.7%