



CURRENT STATUS OF CONFIRMED CASES

7,139

Total cases

103

Total deaths

6,566

Cases recovered

6

CURRENT CASES
INTENSIVE CARE UNITS (ICU)

ACT	NSW	NT	QLD	SA	TAS	VIC	WA
0	1	0	1	0	0	4	0

30

CURRENT CASES
ADMITTED TO HOSPITALS

ACT	NSW	NT	QLD	SA	TAS	VIC	WA
0	14	0	4	0	4	8	0

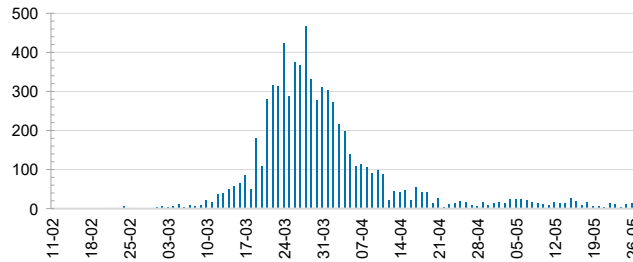
1,338,321

0.5% POSITIVE

TOTAL TESTS
CONDUCTED

ACT	NSW	NT	QLD
16,575	464,351	7,528	180,371
POSITIVE	POSITIVE	POSITIVE	POSITIVE
0.6%	0.7%	0.4%	0.6%
SA	TAS	VIC	WA
92,903	25,595	470,832	80,166
POSITIVE	POSITIVE	POSITIVE	POSITIVE
0.5%	0.9%	0.3%	0.7%

DAILY NUMBER OF REPORTED CASES

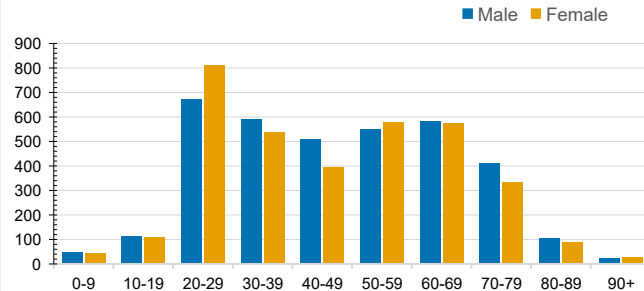


CASES IN AGED CARE SERVICES

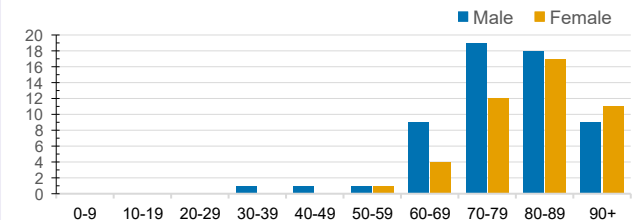
Confirmed Cases	Australia	ACT	NSW	NT	QLD	SA	TAS	VIC	WA
Residential Care Recipients	67 [28] (27)	0	61 [28] (25)	0	1 (1)	0	1 (1)	4	0
In Home Care Recipients	31 [27] (3)	0	13 [13]	0	8 [8]	1 [1]	5 [2] (2)	3 [3]	1 (1)

Cases in care recipients [recovered] (deaths)

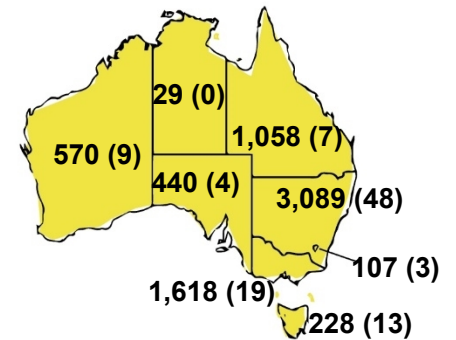
CASES BY AGE GROUP AND SEX



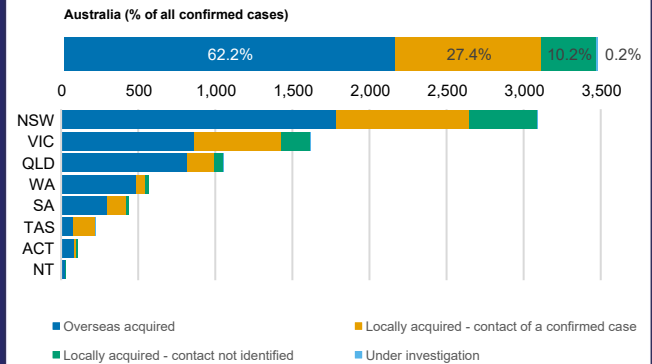
DEATHS BY AGE GROUP AND SEX



CASES (DEATHS) BY STATE AND TERRITORIES



CASES BY SOURCE OF INFECTION



PUBLIC HEALTH RESPONSE MEASURE

