



CURRENT STATUS OF CONFIRMED CASES

7,133

Total cases

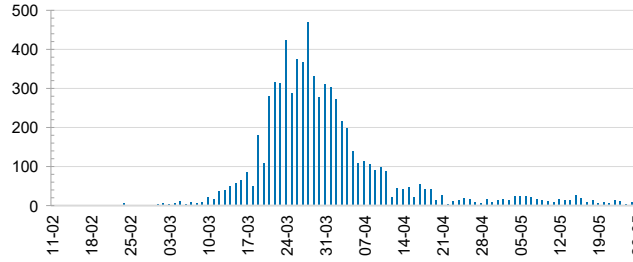
102

Total deaths

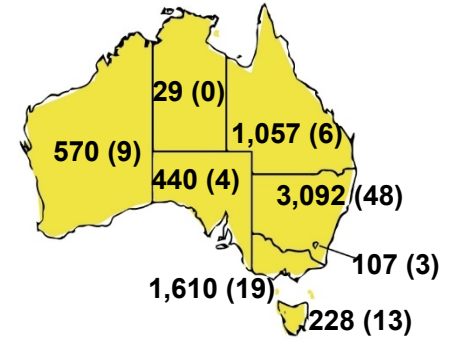
6,553

Cases recovered

DAILY NUMBER OF REPORTED CASES



CASES (DEATHS) BY STATE AND TERRITORIES



5

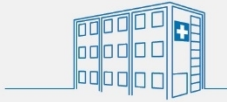
CURRENT CASES
INTENSIVE CARE UNITS (ICU)



ACT	NSW	NT	QLD	SA	TAS	VIC	WA
0	1	0	1	0	0	3	0

30

CURRENT CASES
ADMITTED TO HOSPITALS



ACT	NSW	NT	QLD	SA	TAS	VIC	WA
0	14	0	4	0	4	8	0

1,288,223

0.6% POSITIVE

TOTAL TESTS
CONDUCTED



ACT	NSW	NT	QLD
16,196	456,724	7,396	176,561
POSITIVE	POSITIVE	POSITIVE	POSITIVE
0.7%	0.7%	0.4%	0.6%

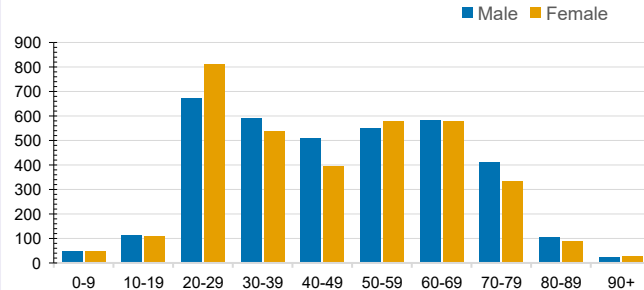
SA	TAS	VIC	WA
90,384	25,248	437,406	78,308
POSITIVE	POSITIVE	POSITIVE	POSITIVE
0.5%	0.9%	0.4%	0.7%

CASES IN AGED CARE SERVICES

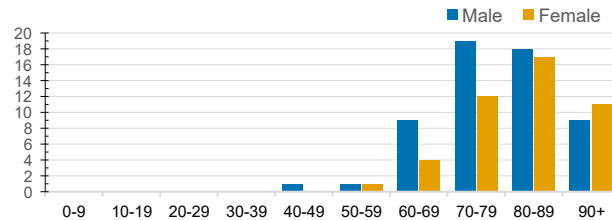
Confirmed Cases	Australia	ACT	NSW	NT	QLD	SA	TAS	VIC	WA
Residential Care Recipients	67 [28] (27)	0	61 [28] (25)	0	1 (1)	0	1 (1)	4	0
In Home Care Recipients	31 [27] (3)	0	13 [13] (0)	0	8 [8] (1)	1 [1] (2)	5 [2] (3)	3 [3] (1)	1 (1)

Cases in care recipients [recovered] (deaths)

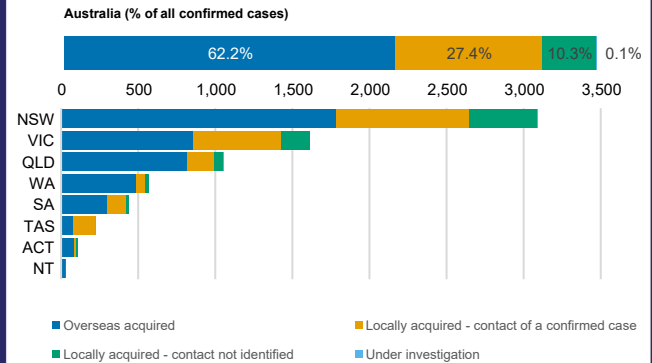
CASES BY AGE GROUP AND SEX



DEATHS BY AGE GROUP AND SEX



CASES BY SOURCE OF INFECTION



PUBLIC HEALTH RESPONSE MEASURE

