



#### CURRENT STATUS OF CONFIRMED CASES

7,109

Total cases

102

Total deaths

6,506

Cases recovered

5

CURRENT CASES  
INTENSIVE CARE UNITS (ICU)

ACT	NSW	NT	QLD	SA	TAS	VIC	WA
0	1	0	1	0	0	3	0

33

CURRENT CASES  
ADMITTED TO HOSPITALS

ACT	NSW	NT	QLD	SA	TAS	VIC	WA
0	16	0	4	0	4	9	0

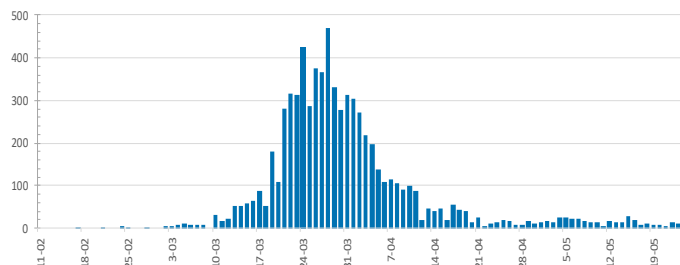
1,224,795

0.6% POSITIVE

TOTAL TESTS  
CONDUCTED

ACT	NSW	NT	QLD
15,760	418,427	7,217	173,864
POSITIVE	POSITIVE	POSITIVE	POSITIVE
0.7%	0.7%	0.4%	0.6%
SA	TAS	VIC	WA
88,446	24,191	420,246	76,644
POSITIVE	POSITIVE	POSITIVE	POSITIVE
0.5%	0.9%	0.4%	0.7%

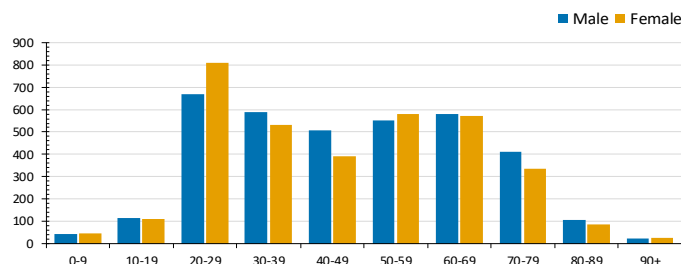
#### DAILY NUMBER OF REPORTED CASES



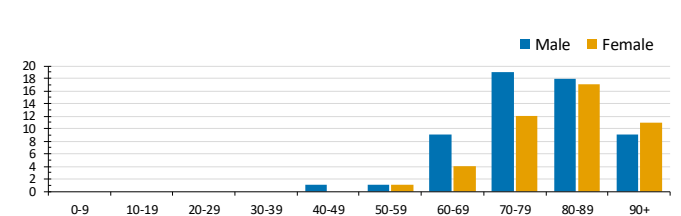
#### CASES IN AGED CARE SERVICES

Confirmed Cases	Australia	ACT	NSW	NT	Qld	SA	Tas	Vic	WA
Residential Care Recipients	66 [26] (27)	0	61 [26] (25)	0	1 (1)	0	1 (1)	3	0
In Home Care Recipients	31 [27] (3)	0	13 [13]	0	8 [8]	1 [1]	5 [2] (2)	3 [3]	1 (1)
Cases in care recipients [recovered] (deaths)									

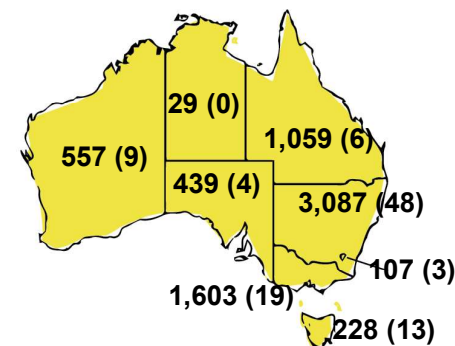
#### CASES BY AGE GROUP AND SEX



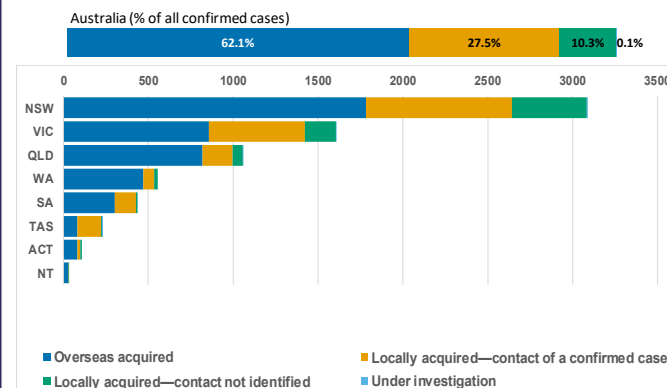
#### DEATHS BY AGE GROUP AND SEX



#### CASES (DEATHS) BY STATE AND TERRITORIES



#### CASES BY SOURCE OF INFECTION



#### PUBLIC HEALTH RESPONSE MEASURE

Proportion of total cases under investigation

