



CURRENT STATUS OF CONFIRMED CASES

7,081

Total cases

100

Total deaths

6,472

Cases recovered

9

CURRENT CASES
INTENSIVE CARE UNITS (ICU)

ACT	NSW	NT	QLD	SA	TAS	VIC	WA
0	3	0	1	0	0	5	0

41

CURRENT CASES
ADMITTED TO HOSPITALS

ACT	NSW	NT	QLD	SA	TAS	VIC	WA
0	20	1	4	1	5	10	0

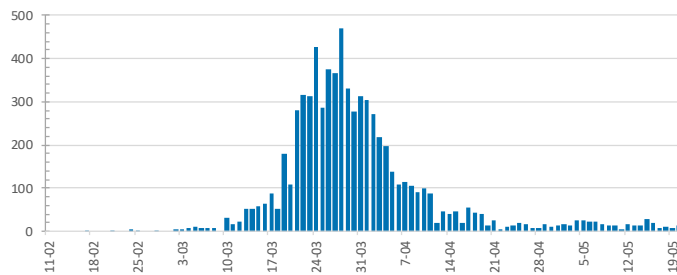
1,137,684

0.6% POSITIVE

TOTAL TESTS
CONDUCTED

ACT	NSW	NT	QLD
14,916	390,930	6,809	166,877
POSITIVE	POSITIVE	POSITIVE	POSITIVE
0.7%	0.8%	0.4%	0.6%
SA	TAS	VIC	WA
84,389	23,448	378,673	71,642
POSITIVE	POSITIVE	POSITIVE	POSITIVE
0.5%	1.0%	0.4%	0.8%

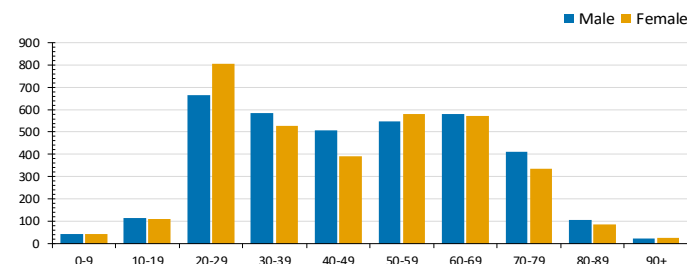
DAILY NUMBER OF REPORTED CASES



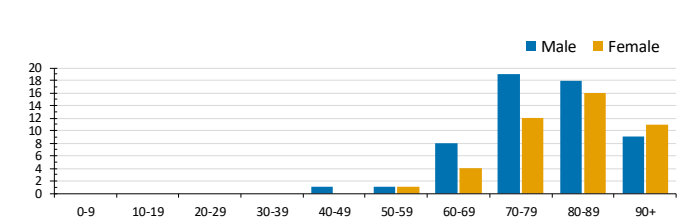
CASES IN AGED CARE SERVICES

Confirmed Cases	Australia	ACT	NSW	NT	Qld	SA	Tas	Vic	WA
Residential Care Recipients	66 [22] (27)	0	61 [22] (25)	0	1 (1)	0	1 (1)	3	0
In Home Care Recipients	31 [27] (3)	0	13 [13]	0	8 [8]	1 [1]	5 [2] (2)	3 [3]	1 (1)
Cases in care recipients [recovered] (deaths)									

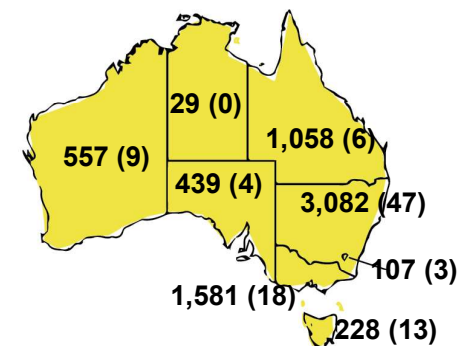
CASES BY AGE GROUP AND SEX



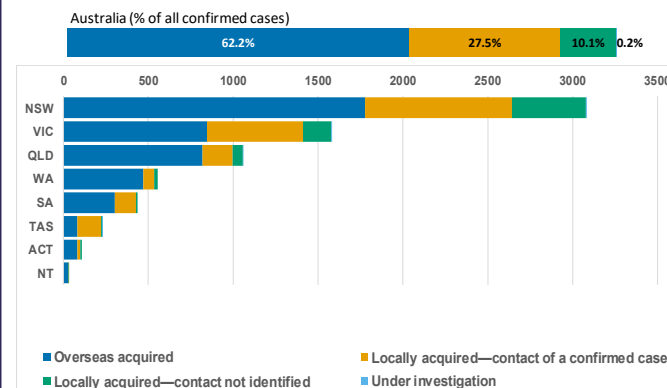
DEATHS BY AGE GROUP AND SEX



CASES (DEATHS) BY STATE AND TERRITORIES



CASES BY SOURCE OF INFECTION



PUBLIC HEALTH RESPONSE MEASURE

Proportion of total cases under investigation

