



CURRENT STATUS OF CONFIRMED CASES

7,079

Total cases

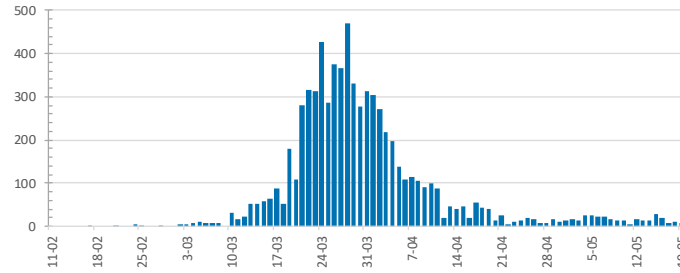
100

Total deaths

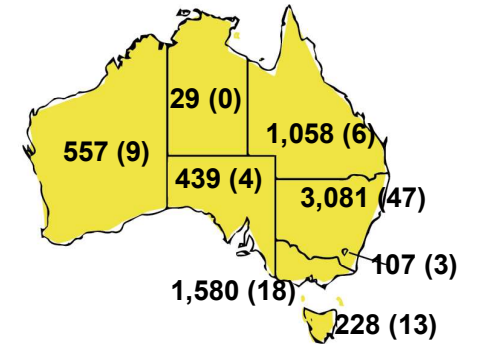
6,444

Cases recovered

DAILY NUMBER OF REPORTED CASES



CASES (DEATHS) BY STATE AND TERRITORIES



9

CURRENT CASES  
INTENSIVE CARE UNITS (ICU)

ACT	NSW	NT	QLD	SA	TAS	VIC	WA
0	3	0	1	0	0	5	0

43

CURRENT CASES  
ADMITTED TO HOSPITALS

ACT	NSW	NT	QLD	SA	TAS	VIC	WA
0	20	2	4	1	6	10	0

1,111,567

0.6% POSITIVE

TOTAL TESTS  
CONDUCTED

ACT	NSW	NT	QLD
14,712	384,278	6,673	163,560
POSITIVE	POSITIVE	POSITIVE	POSITIVE
0.7%	0.8%	0.4%	0.6%

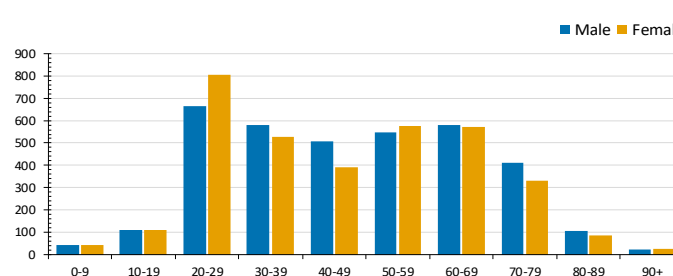
SA	TAS	VIC	WA
82,401	23,027	367,272	69,644
POSITIVE	POSITIVE	POSITIVE	POSITIVE
0.5%	1.0%	0.4%	0.8%

CASES IN AGED CARE SERVICES

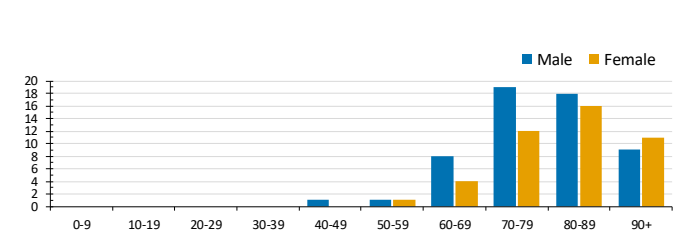
Confirmed Cases	Australia	ACT	NSW	NT	Qld	SA	Tas	Vic	WA
Residential Care Recipients	66 [22] (29)	0	61 [22] (27)	0	1 (1)	0	1 (1)	3	0
In Home Care Recipients	31 [27] (3)	0	13 [13]	0	8 [8]	1 [1]	5 [2] (2)	3 [3]	1 (1)

Cases in care recipients [recovered] (deaths)

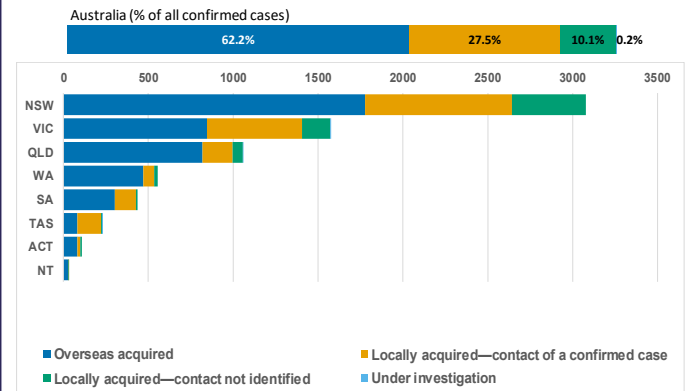
CASES BY AGE GROUP AND SEX



DEATHS BY AGE GROUP AND SEX



CASES BY SOURCE OF INFECTION



PUBLIC HEALTH RESPONSE MEASURE

Proportion of total cases under investigation

