



CURRENT STATUS OF CONFIRMED CASES

7,068

Total cases

99

Total deaths

6,411

Cases recovered

11

CURRENT CASES
INTENSIVE CARE UNITS (ICU)

| ACT | NSW | NT | QLD | SA | TAS | VIC | WA |
|-----|-----|----|-----|----|-----|-----|----|
| 0 | 5 | 0 | 1 | 0 | 0 | 5 | 0 |

47

CURRENT CASES
ADMITTED TO HOSPITALS

| ACT | NSW | NT | QLD | SA | TAS | VIC | WA |
|-----|-----|----|-----|----|-----|-----|----|
| 0 | 22 | 2 | 4 | 1 | 6 | 11 | 1 |

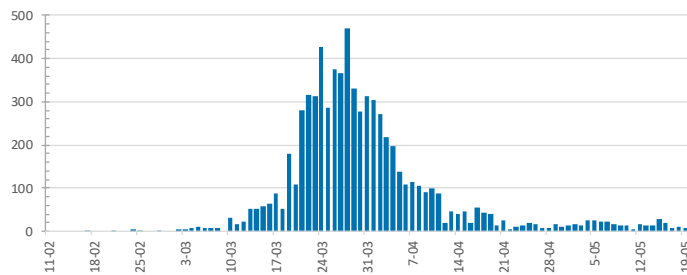
1,085,870

0.7% POSITIVE

TOTAL TESTS
CONDUCTED

| ACT | NSW | NT | QLD |
|----------|----------|----------|----------|
| 14,448 | 377,185 | 6,517 | 158,641 |
| POSITIVE | POSITIVE | POSITIVE | POSITIVE |
| 0.7% | 0.8% | 0.4% | 0.7% |
| SA | TAS | VIC | WA |
| 80,713 | 22,597 | 358,120 | 67,649 |
| POSITIVE | POSITIVE | POSITIVE | POSITIVE |
| 0.5% | 1.0% | 0.4% | 0.8% |

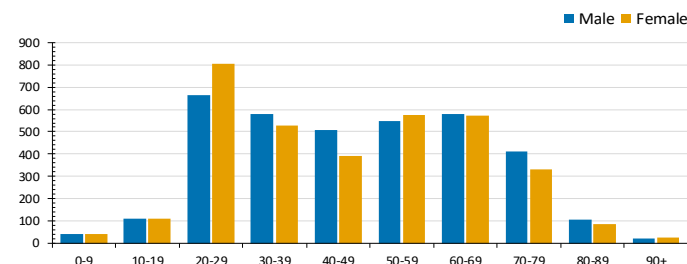
DAILY NUMBER OF REPORTED CASES



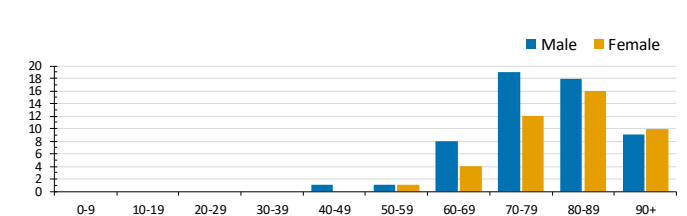
CASES IN AGED CARE SERVICES

| Confirmed Cases | Australia | ACT | NSW | NT | Qld | SA | Tas | Vic | WA |
|---|--------------|-----|--------------|----|-------|-------|-----------|-------|-------|
| Residential Care Recipients | 65 [22] (27) | 0 | 61 [22] (25) | 0 | 1 (1) | 0 | 1 (1) | 2 | 0 |
| In Home Care Recipients | 31 [26] (3) | 0 | 13 [13] | 0 | 8 [7] | 1 [1] | 5 [2] (2) | 3 [3] | 1 (1) |
| Cases in care recipients [recovered] (deaths) | | | | | | | | | |

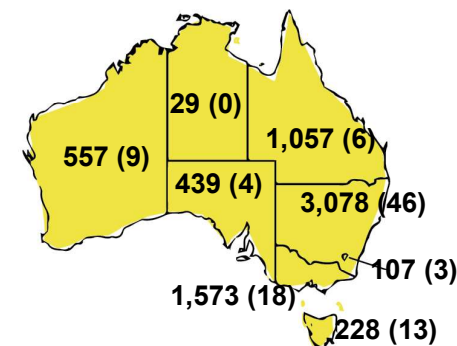
CASES BY AGE GROUP AND SEX



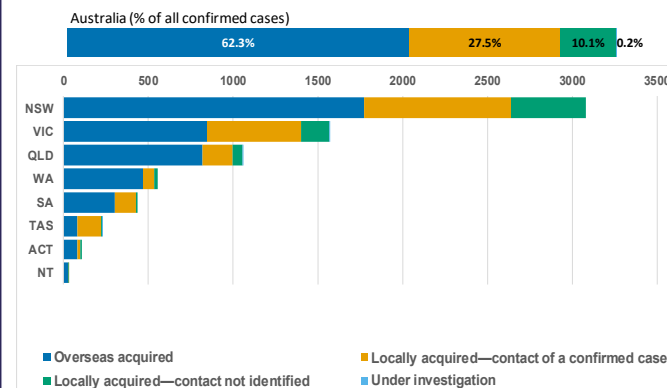
DEATHS BY AGE GROUP AND SEX



CASES (DEATHS) BY STATE AND TERRITORIES



CASES BY SOURCE OF INFECTION



PUBLIC HEALTH RESPONSE MEASURE

Proportion of total cases under investigation

