



CURRENT STATUS OF CONFIRMED CASES

6,975

Total cases

98

Total deaths

6,271

Cases recovered

17

CURRENT CASES
INTENSIVE CARE UNITS (ICU)

ACT	NSW	NT	QLD	SA	TAS	VIC	WA
0	7	0	3	0	0	6	1

50

CURRENT CASES
ADMITTED TO HOSPITALS

ACT	NSW	NT	QLD	SA	TAS	VIC	WA
0	22	2	7	1	8	9	1

909,025

0.8% POSITIVE

TOTAL TESTS
CONDUCTED

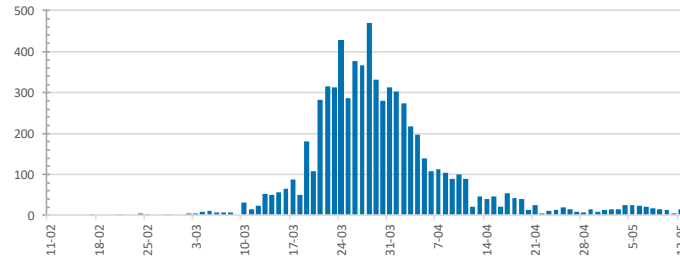
ACT	NSW	NT	QLD
12,637	323,887	5,759	142,040

POSITIVE	POSITIVE	POSITIVE	POSITIVE
0.8%	0.9%	0.5%	0.7%

SA	TAS	VIC	WA
72,725	20,088	273,255	58,634

POSITIVE	POSITIVE	POSITIVE	POSITIVE
0.6%	1.1%	0.6%	0.9%

DAILY NUMBER OF REPORTED CASES

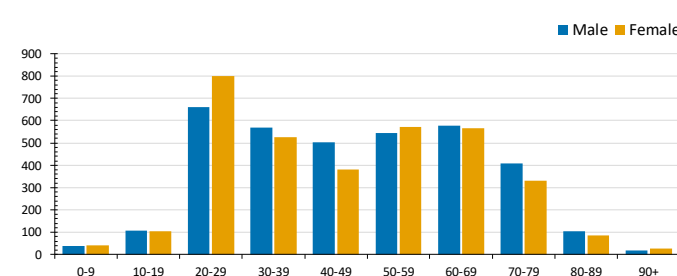


CASES IN AGED CARE SERVICES

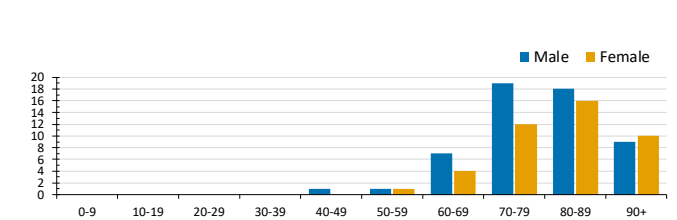
Confirmed Cases	Australia	ACT	NSW	NT	Qld	SA	Tas	Vic	WA
Residential Care Recipients	63 [16] (26)	0	61 [16] (24)	0	1 (1)	0	1 (1)	0	0
In Home Care Recipients	31 [25] (3)	0	13 [13]	0	8 [7]	1 [1]	5 [1] (2)	3 [3]	1 (1)

Cases in care recipients [recovered] (deaths)

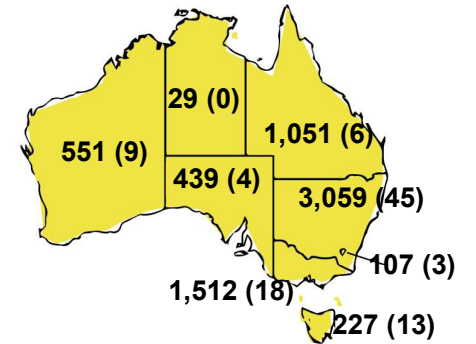
CASES BY AGE GROUP AND SEX



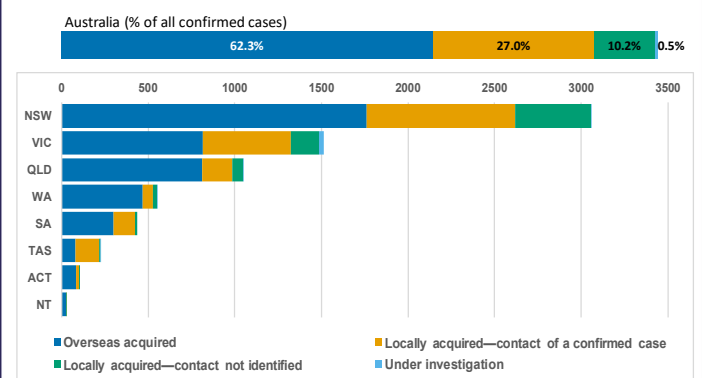
DEATHS BY AGE GROUP AND SEX



CASES (DEATHS) BY STATE AND TERRITORIES



CASES BY SOURCE OF INFECTION



PUBLIC HEALTH RESPONSE MEASURE

Proportion of total cases under investigation

