



#### CURRENT STATUS OF CONFIRMED CASES

**6,948**

Total cases

**97**

Total deaths

**6,179**

Cases recovered

**16**

CURRENT CASES  
INTENSIVE CARE UNITS (ICU)

ACT	NSW	NT	QLD	SA	TAS	VIC	WA
0	7	0	3	0	0	5	1

**49**

CURRENT CASES  
ADMITTED TO HOSPITALS

ACT	NSW	NT	QLD	SA	TAS	VIC	WA
0	20	2	7	1	8	7	4

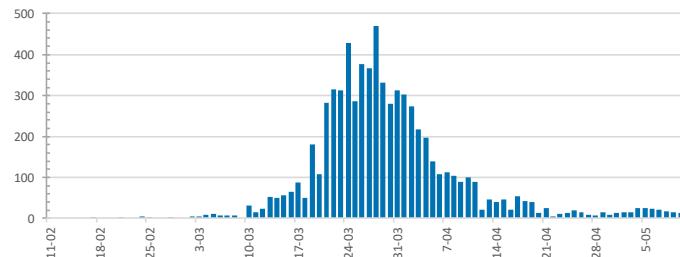
**855,119**

**0.8%** POSITIVE

TOTAL TESTS  
CONDUCTED

ACT	NSW	NT	QLD
11,939	309,722	5,527	137,009
POSITIVE	POSITIVE	POSITIVE	POSITIVE
0.9%	1.0%	0.5%	0.8%
SA	TAS	VIC	WA
70,147	19,351	245,326	56,098
POSITIVE	POSITIVE	POSITIVE	POSITIVE
0.6%	1.2%	0.6%	1.0%

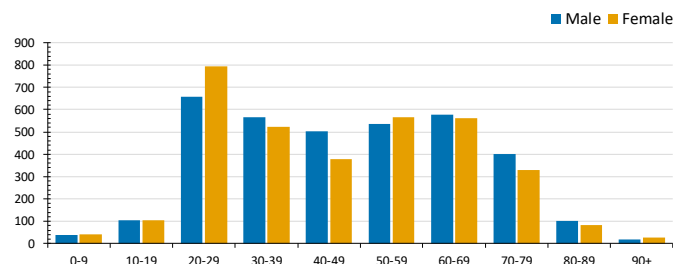
#### DAILY NUMBER OF REPORTED CASES



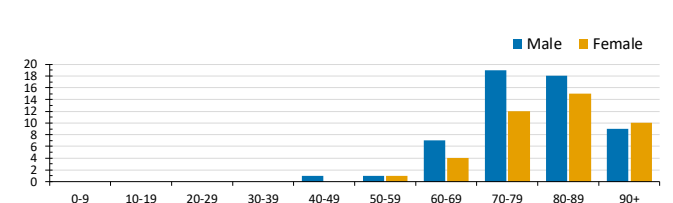
#### CASES IN AGED CARE SERVICES

Confirmed Cases	Australia	ACT	NSW	NT	QLD	SA	Tas	Vic	WA
Residential Care Recipients	63 [16] (26)	0	61 [16] (24)	0	1 (1)	0	1 (1)	0	0
In Home Care Recipients	31 [22] (3)	0	13 [11]	0	8 [7]	1 [1]	5 (2)	3 [3]	1 (1)
Cases in care recipients [recovered] (deaths)									

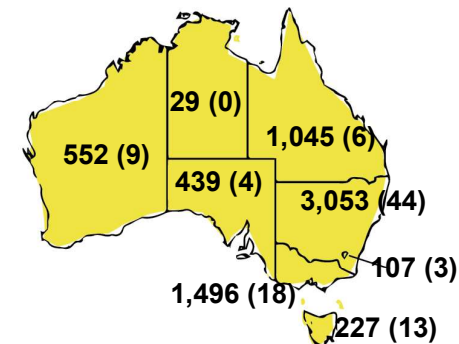
#### CASES BY AGE GROUP AND SEX



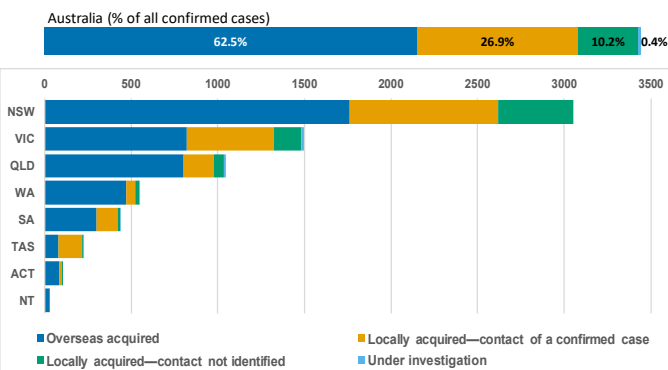
#### DEATHS BY AGE GROUP AND SEX



#### CASES (DEATHS) BY STATE AND TERRITORIES



#### CASES BY SOURCE OF INFECTION



#### PUBLIC HEALTH RESPONSE MEASURE

Proportion of total cases under investigation

