



CURRENT STATUS OF CONFIRMED CASES

6,619

Total cases

71

Total deaths

4,258

Cases recovered

49

CURRENT CASES
INTENSIVE CARE UNITS (ICU)



ACT	NSW	NT	QLD	SA	TAS	VIC	WA
0	22	0	7	1	2	11	6

170

CURRENT CASES
ADMITTED TO HOSPITALS



ACT	NSW	NT	QLD	SA	TAS	VIC	WA
1	53	16	20	6	19	28	27

431,734

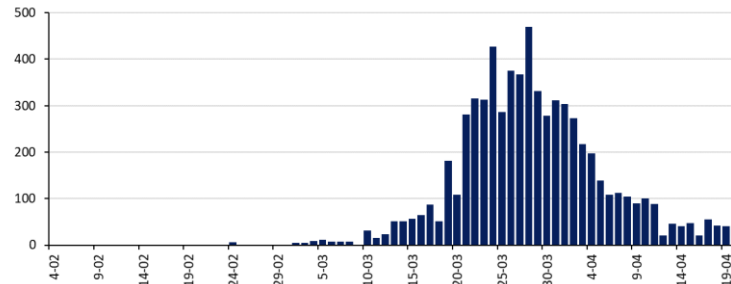
1.5% POSITIVE

TOTAL TESTS
CONDUCTED



ACT	NSW	NT	QLD
7,063	168,626	3,731	85,870
POSITIVE	POSITIVE	POSITIVE	POSITIVE
1.5%	1.8%	0.7%	1.2%
SA	TAS	VIC	WA
44,278	6,697	86,000	29,469
POSITIVE	POSITIVE	POSITIVE	POSITIVE
1.0%	2.9%	1.5%	1.8%

DAILY NUMBER OF REPORTED CASES

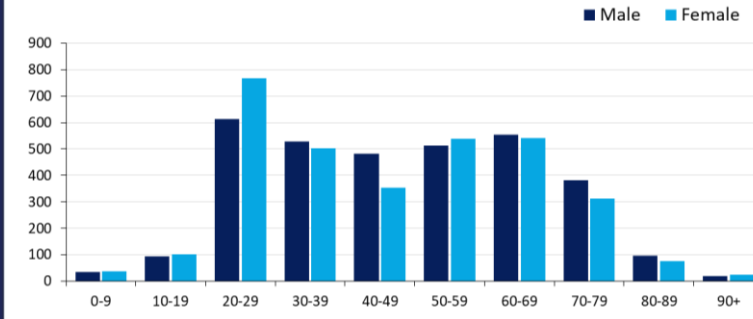


CASES IN AGED CARE SERVICES

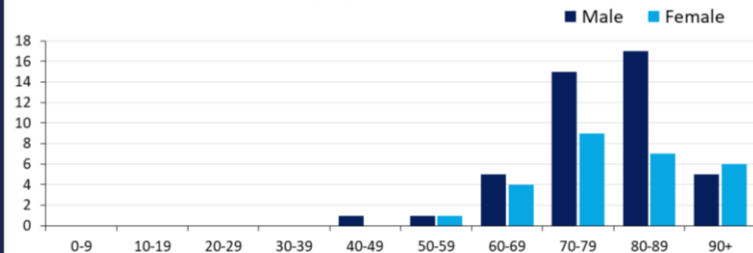
Confirmed cases	Australia	ACT	NSW	NT	Qld	SA	Tas	Vic	WA
Residential Care	53 [11] (11)	0	51 [11] (10)	0	1 (1)	0	1	0	0
In Home Care	25 [6] (1)	0	9 [1]	0	7 [3]	1	4 (1)	3 [2]	1

Cases in care recipients [recovered] (deaths)

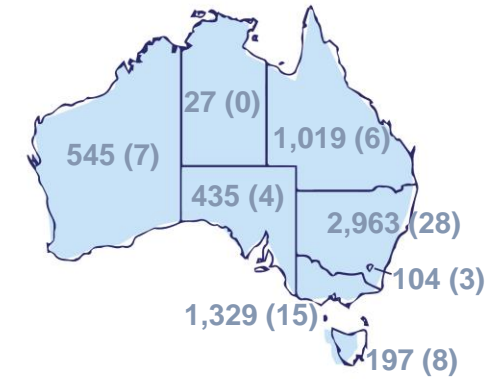
CASES BY AGE GROUP AND SEX



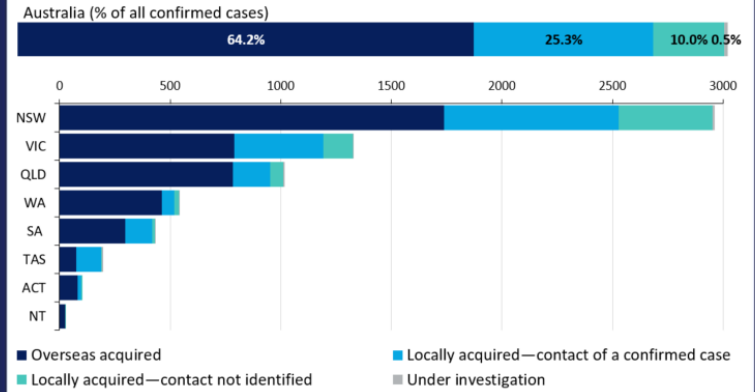
DEATHS BY AGE GROUP AND SEX



CASES (DEATHS) BY STATE AND TERRITORIES



CASES BY SOURCE OF INFECTION



PUBLIC HEALTH RESPONSE MEASURE

