



CURRENT STATUS OF CONFIRMED CASES

6,013

Total cases

50

Total deaths

2,813

Cases recovered

87

CURRENT CASES
INTENSIVE CARE UNITS (ICU)



ACT	NSW	NT	QLD	SA	TAS	VIC	WA
3	36	0	11	8	2	12	15

263

CURRENT CASES
ADMITTED TO HOSPITALS



ACT	NSW	NT	QLD	SA	TAS	VIC	WA
4	92	24	35	16	13	45	34

319,368

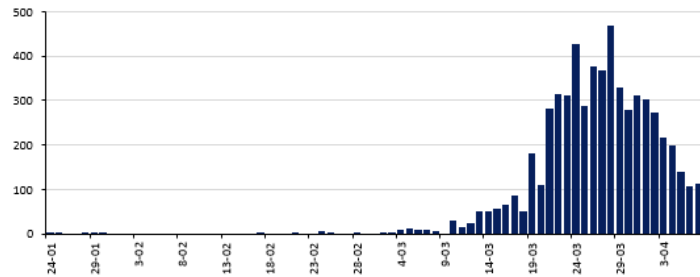
1.9% POSITIVE

TOTAL TESTS
CONDUCTED



ACT	NSW	NT	QLD
5,679	129,091	3,062	63,552
POSITIVE	POSITIVE	POSITIVE	POSITIVE
1.7%	2.1%	0.9%	1.5%
SA	TAS	VIC	WA
34,593	3,295	60,000	20,096
POSITIVE	POSITIVE	POSITIVE	POSITIVE
1.2%	2.9%	2.0%	2.4%

DAILY NUMBER OF REPORTED CASES

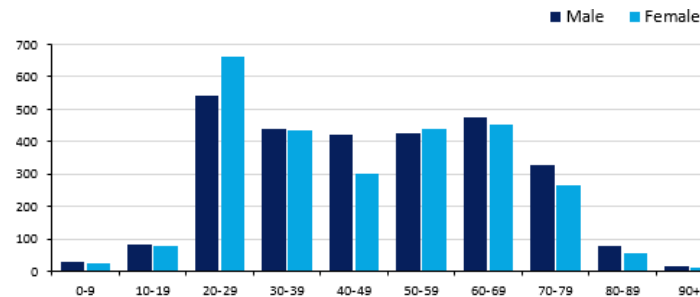


CASES IN AGED CARE SERVICES

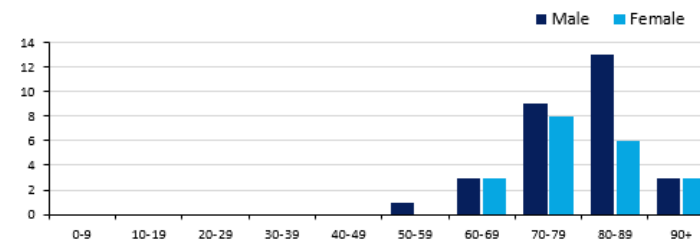
Confirmed cases	Australia	ACT	NSW	NT	Qld	SA	Tas	Vic	WA
Residential Care	25 [5] (9)	0	23 [5] (8)	0	1 (1)	0	0	1	0
In Home Care	10 (1)	0	4	0	2	1	1 (1)	2	0

Cases in care recipients [recovered] (deaths)

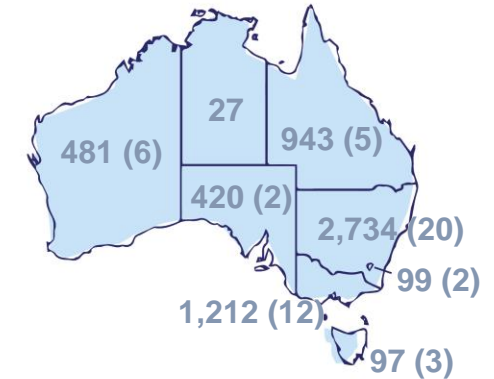
CASES BY AGE GROUP AND SEX



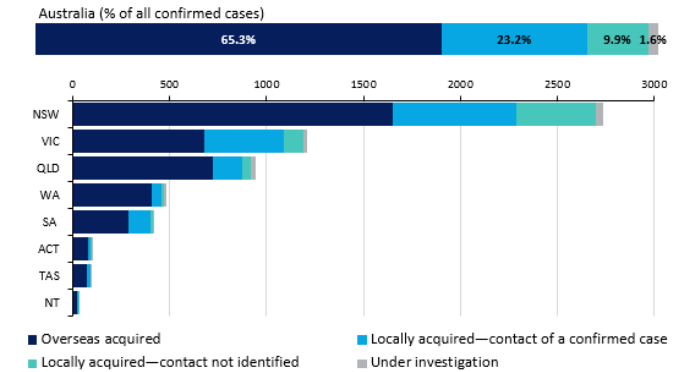
DEATHS BY AGE GROUP AND SEX



CASES (DEATHS) BY STATE AND TERRITORIES



CASES BY SOURCE OF INFECTION



PUBLIC HEALTH RESPONSE MEASURE

Proportion of total cases under investigation

