



CURRENT STATUS OF CONFIRMED CASES

5,795

Total cases

39

Total deaths

2,432

Cases recovered

96

CURRENT CASES
INTENSIVE CARE UNITS (ICU)



ACT	NSW	NT	QLD	SA	TAS	VIC	WA
3	40	0	12	10	2	11	18

448

CURRENT CASES
ADMITTED TO HOSPITALS



ACT	NSW	NT	QLD	SA	TAS	VIC	WA
7	250	24	43	20	11	35	58

302,663

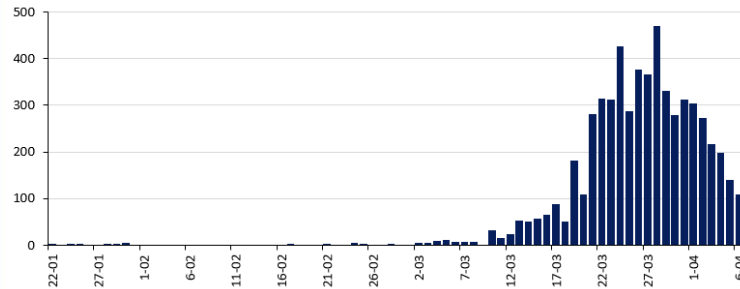
1.9% POSITIVE

TOTAL TESTS
CONDUCTED



ACT	NSW	NT	QLD
5,329	124,038	2,805	58,490
POSITIVE	POSITIVE	POSITIVE	POSITIVE
1.8%	2.1%	1.0%	1.6%
SA	TAS	VIC	WA
33,303	2,972	57,000	18,726
POSITIVE	POSITIVE	POSITIVE	POSITIVE
1.2%	2.9%	2.0%	2.5%

DAILY NUMBER OF REPORTED CASES

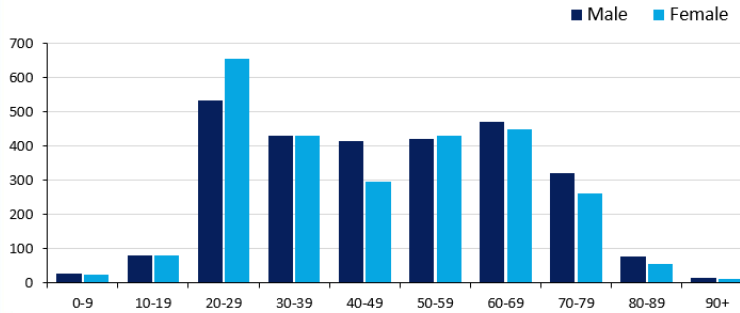


CASES IN AGED CARE SERVICES

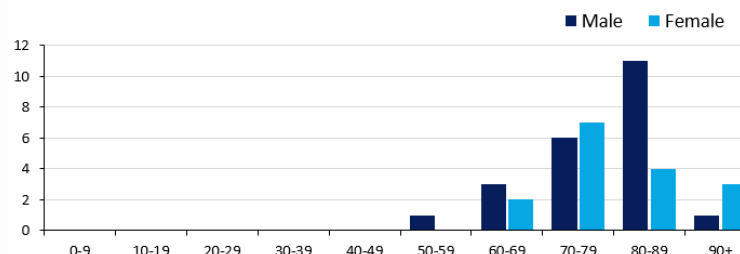
Confirmed cases	Australia	ACT	NSW	NT	Qld	SA	Tas	Vic	WA
Residential Care	25 [4] (7)	0	23 [4] (6)	0	1 (1)	0	0	1	0
In Home Care	7 (1)	0	3	0	2	0	1 (1)	1	0

Cases in care recipients [recovered] (deaths)

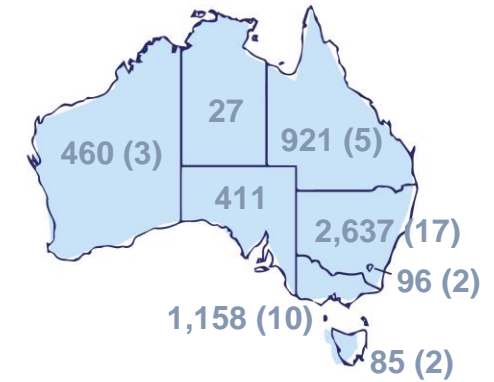
CASES BY AGE GROUP AND SEX



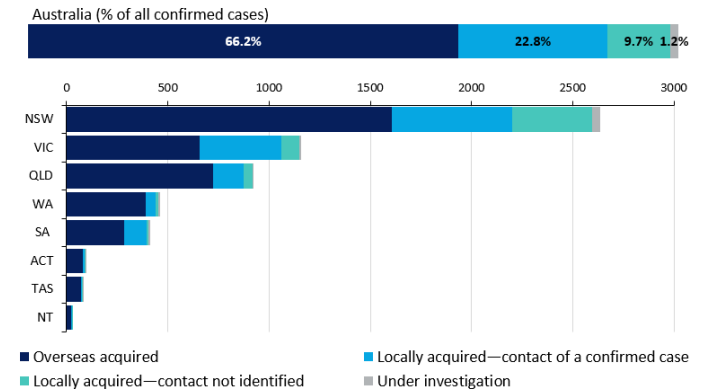
DEATHS BY AGE GROUP AND SEX



CASES (DEATHS) BY STATE AND TERRITORIES



CASES BY SOURCE OF INFECTION



PUBLIC HEALTH RESPONSE MEASURE

