



CURRENT STATUS OF CONFIRMED CASES

6,523

Total cases

65

Total deaths

3,819

Cases recovered

60

CURRENT CASES  
INTENSIVE CARE UNITS (ICU)



ACT	NSW	NT	QLD	SA	TAS	VIC	WA
1	26	0	11	1	2	13	6

192

CURRENT CASES  
ADMITTED TO HOSPITALS



ACT	NSW	NT	QLD	SA	TAS	VIC	WA
2	63	19	19	7	16	32	34

391,530

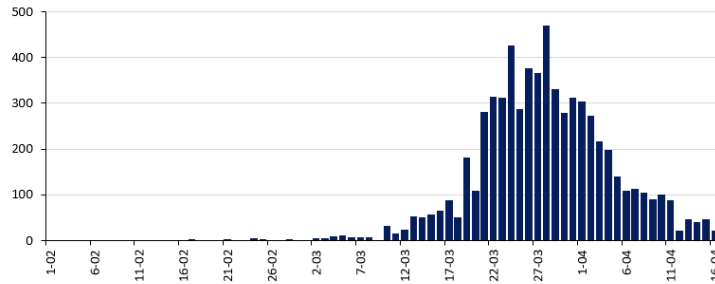
1.7% POSITIVE

TOTAL TESTS  
CONDUCTED



ACT	NSW	NT	QLD
6,754	155,302	3,606	80,227
POSITIVE	POSITIVE	POSITIVE	POSITIVE
1.5%	1.9%	0.7%	1.3%
SA	TAS	VIC	WA
39,318	5,098	75,000	26,225
POSITIVE	POSITIVE	POSITIVE	POSITIVE
1.1%	3.6%	1.7%	2.1%

DAILY NUMBER OF REPORTED CASES

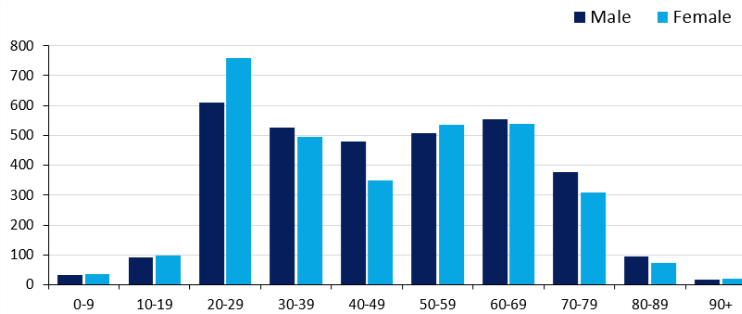


CASES IN AGED CARE SERVICES

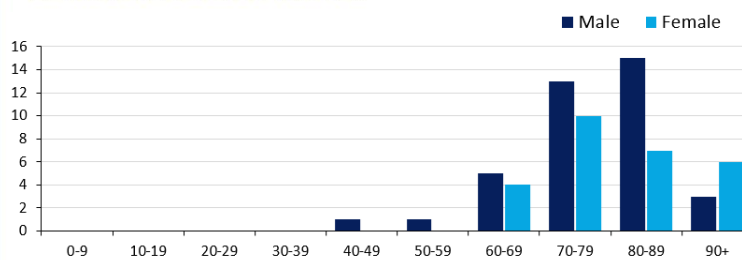
Confirmed cases	Australia	ACT	NSW	NT	Qld	SA	Tas	Vic	WA
Residential Care	46 [12] (9)	0	45 [12] (8)	0	1 (1)	0	0	0	0
In Home Care	25 [4] (1)	0	9 [1]	0	7 [3]	1	4 (1)	3	1

Cases in care recipients [recovered] (deaths)

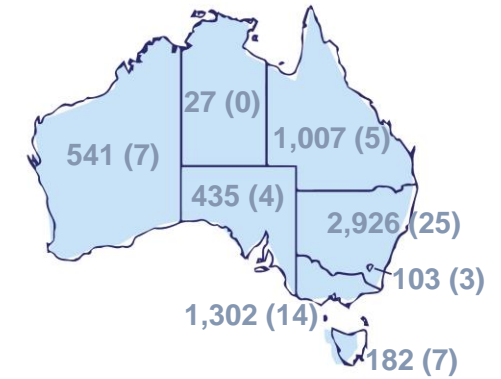
CASES BY AGE GROUP AND SEX



DEATHS BY AGE GROUP AND SEX

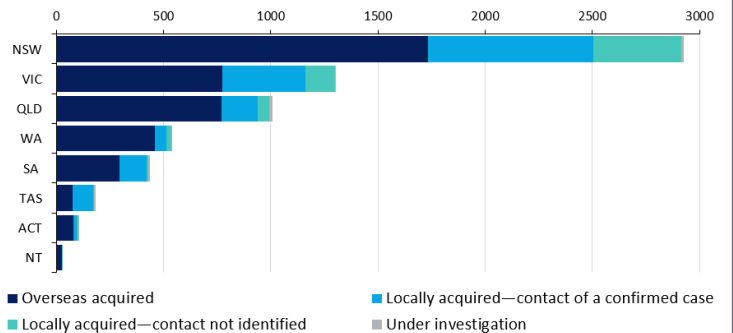


CASES (DEATHS) BY STATE AND TERRITORIES



CASES BY SOURCE OF INFECTION

Australia (% of all confirmed cases)



PUBLIC HEALTH RESPONSE MEASURE

Proportion of total cases under investigation

