



#### CURRENT STATUS OF CONFIRMED CASES

6,468

Total cases

63

Total deaths

3,747

Cases recovered

66

CURRENT CASES  
INTENSIVE CARE UNITS (ICU)

ACT	NSW	NT	QLD	SA	TAS	VIC	WA
1	26	0	11	1	2	17	8

201

CURRENT CASES  
ADMITTED TO HOSPITALS

ACT	NSW	NT	QLD	SA	TAS	VIC	WA
2	64	20	21	10	15	36	33

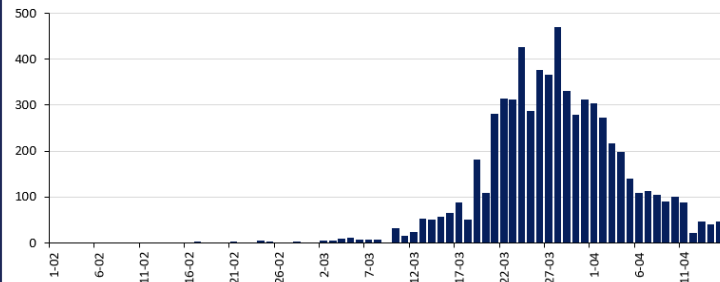
380,003

1.7% POSITIVE

TOTAL TESTS  
CONDUCTED

ACT	NSW	NT	QLD
6,619	150,314	3,521	77,727
POSITIVE	POSITIVE	POSITIVE	POSITIVE
1.6%	1.9%	0.8%	1.3%
SA	TAS	VIC	WA
38,389	4,810	73,000	25,623
POSITIVE	POSITIVE	POSITIVE	POSITIVE
1.1%	3.5%	1.8%	2.1%

#### DAILY NUMBER OF REPORTED CASES

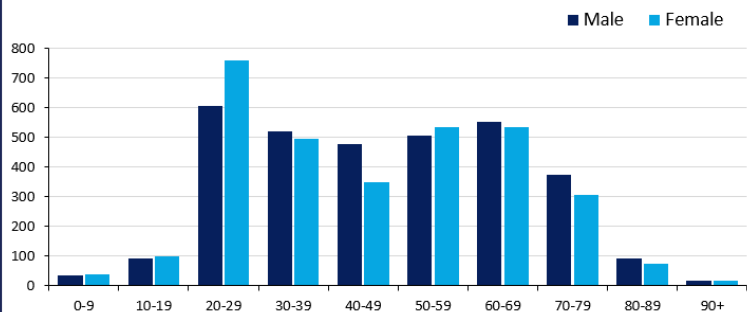


#### CASES IN AGED CARE SERVICES

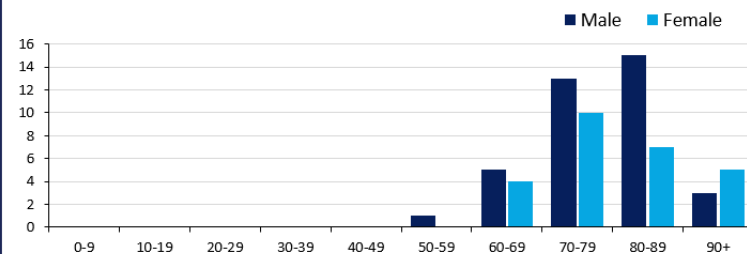
Confirmed cases	Australia	ACT	NSW	NT	Qld	SA	Tas	Vic	WA
Residential Care	46 [5] (9)	0	45 [5] (8)	0	1 (1)	0	0	0	0
In Home Care	21 [3] (1)	0	9 [1]	0	5 (2)	1	2 (1)	3	1

Cases in care recipients [recovered] (deaths)

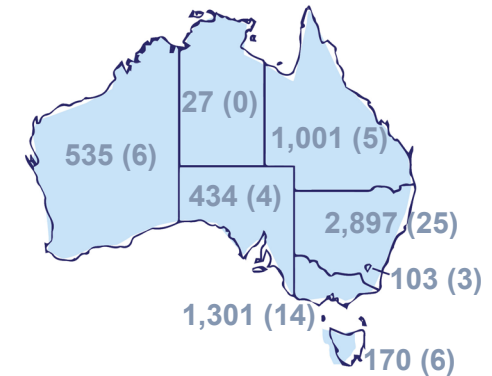
#### CASES BY AGE GROUP AND SEX



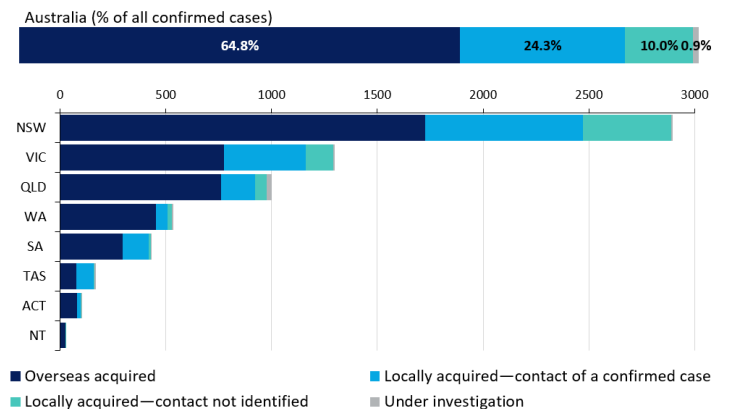
#### DEATHS BY AGE GROUP AND SEX



#### CASES (DEATHS) BY STATE AND TERRITORIES



#### CASES BY SOURCE OF INFECTION



#### PUBLIC HEALTH RESPONSE MEASURE

Proportion of total cases under investigation

