



CURRENT STATUS OF CONFIRMED CASES

6,313

Total cases

59

Total deaths

3,338

Cases recovered

81

CURRENT CASES
INTENSIVE CARE UNITS (ICU)

ACT	NSW	NT	QLD	SA	TAS	VIC	WA
2	30	0	12	6	2	14	15

239

CURRENT CASES
ADMITTED TO HOSPITALS

ACT	NSW	NT	QLD	SA	TAS	VIC	WA
3	78	22	30	14	10	44	38

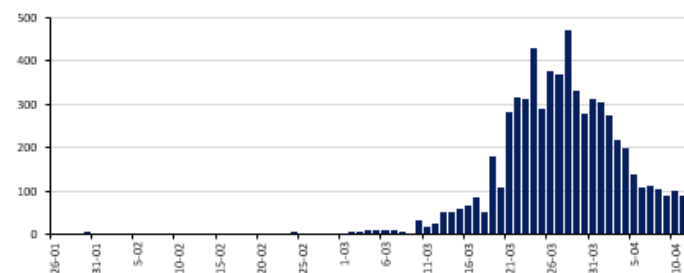
353,941

1.8% POSITIVE

TOTAL TESTS
CONDUCTED

ACT	NSW	NT	QLD
6,159	141,777	3,355	72,313
POSITIVE	POSITIVE	POSITIVE	POSITIVE
1.7%	2.0%	0.8%	1.4%
SA	TAS	VIC	WA
36,449	3,770	67,000	23,118
POSITIVE	POSITIVE	POSITIVE	POSITIVE
1.2%	3.5%	1.9%	2.2%

DAILY NUMBER OF REPORTED CASES

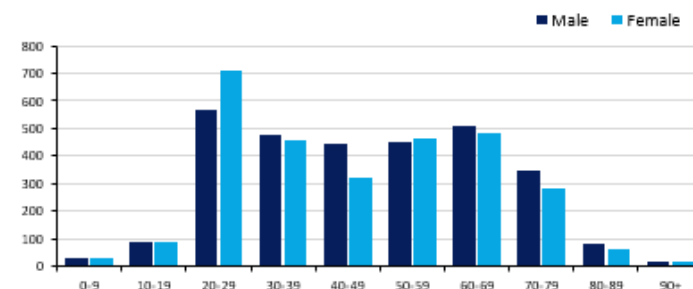


CASES IN AGED CARE SERVICES

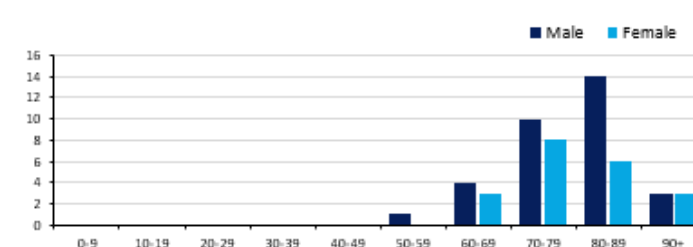
Confirmed cases	Australia	ACT	NSW	NT	Qld	SA	Tas	Vic	WA
Residential Care	26 [5] (9)	0	24 [5] (8)	0	1 (1)	0	0	1	0
In Home Care	17 [1] (1)	0	8 [1]	0	3	1	2 (1)	3	0

Cases in care recipients (recovered) (deaths)

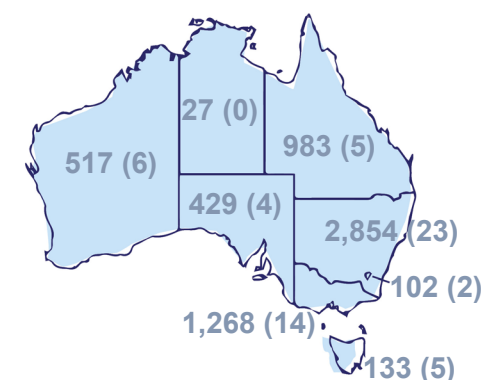
CASES BY AGE GROUP AND SEX



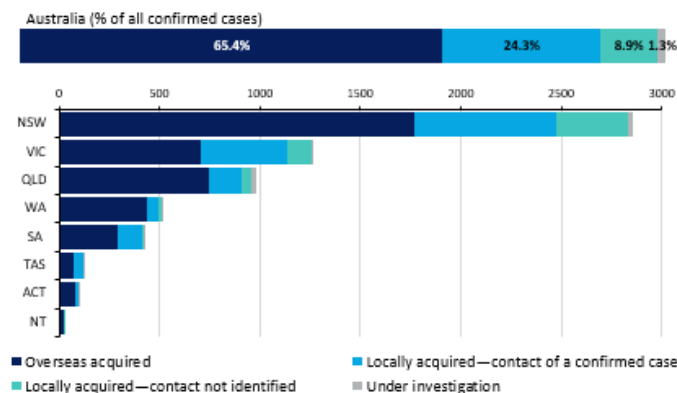
DEATHS BY AGE GROUP AND SEX



CASES (DEATHS) BY STATE AND TERRITORIES



CASES BY SOURCE OF INFECTION



PUBLIC HEALTH RESPONSE MEASURE

Proportion of total cases under investigation

