



#### CURRENT STATUS OF CONFIRMED CASES

6,292

Total cases

56

Total deaths

3,265

Cases recovered

80

CURRENT CASES  
INTENSIVE CARE UNITS (ICU)

| ACT | NSW | NT | QLD | SA | TAS | VIC | WA |
|-----|-----|----|-----|----|-----|-----|----|
| 2   | 30  | 0  | 12  | 7  | 2   | 15  | 12 |

240

CURRENT CASES  
ADMITTED TO HOSPITALS

| ACT | NSW | NT | QLD | SA | TAS | VIC | WA |
|-----|-----|----|-----|----|-----|-----|----|
| 4   | 78  | 24 | 28  | 15 | 8   | 44  | 39 |

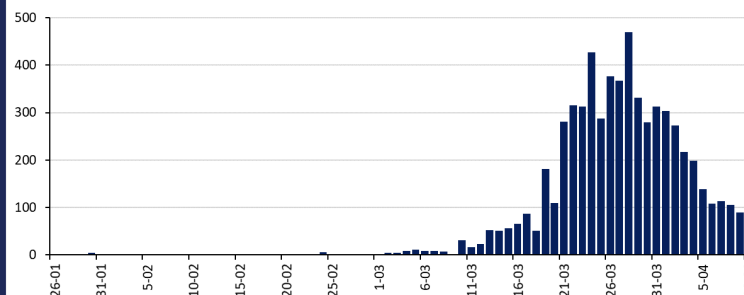
347,847

1.8% POSITIVE

TOTAL TESTS  
CONDUCTED

| ACT      | NSW      | NT       | QLD      |
|----------|----------|----------|----------|
| 6,103    | 138,090  | 3,300    | 71,499   |
| POSITIVE | POSITIVE | POSITIVE | POSITIVE |
| 1.7%     | 2.1%     | 0.8%     | 1.4%     |
| SA       | TAS      | VIC      | WA       |
| 36,159   | 3,591    | 67,000   | 22,105   |
| POSITIVE | POSITIVE | POSITIVE | POSITIVE |
| 1.2%     | 3.4%     | 1.9%     | 2.3%     |

#### DAILY NUMBER OF REPORTED CASES

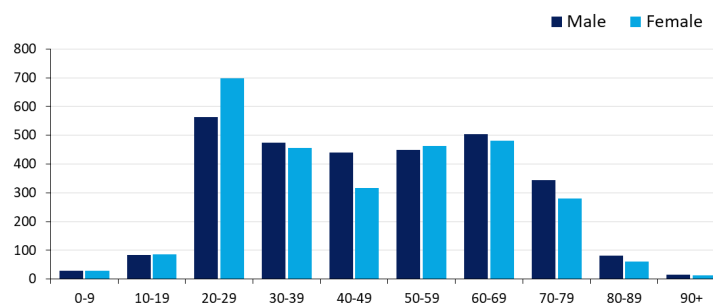


#### CASES IN AGED CARE SERVICES

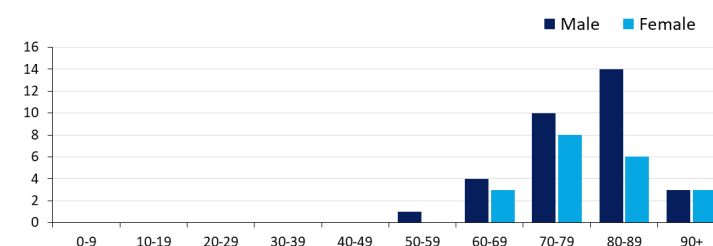
| Confirmed cases  | Australia     | ACT | NSW           | NT | Qld      | SA | Tas      | Vic | WA |
|------------------|---------------|-----|---------------|----|----------|----|----------|-----|----|
| Residential Care | 26<br>[5] (9) | 0   | 24<br>[5] (8) | 0  | 1<br>(1) | 0  | 0        | 1   | 0  |
| In Home Care     | 16 [1]<br>(1) | 0   | 8 [1]         | 0  | 3        | 1  | 2<br>(1) | 2   | 0  |

Cases in care recipients (recovered) (deaths)

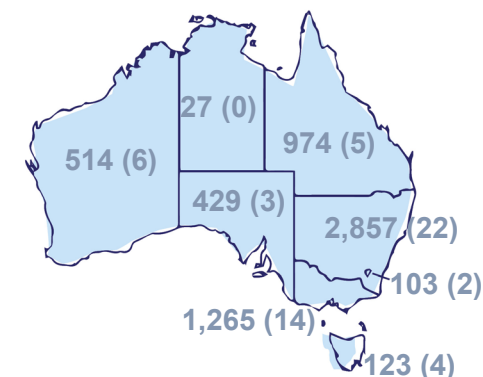
#### CASES BY AGE GROUP AND SEX



#### DEATHS BY AGE GROUP AND SEX

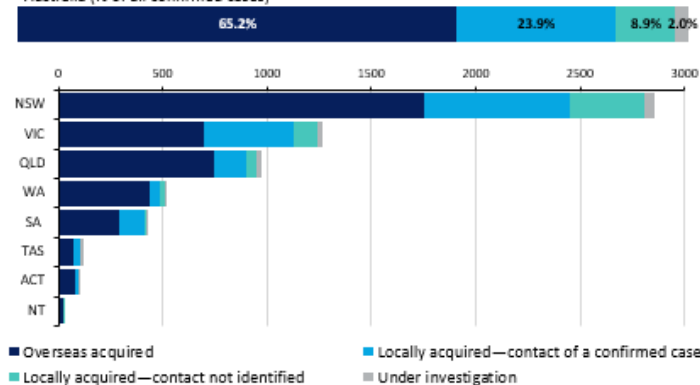


#### CASES (DEATHS) BY STATE AND TERRITORIES



#### CASES BY SOURCE OF INFECTION

Australia (% of all confirmed cases)



#### PUBLIC HEALTH RESPONSE MEASURE

Proportion of total cases under investigation

