



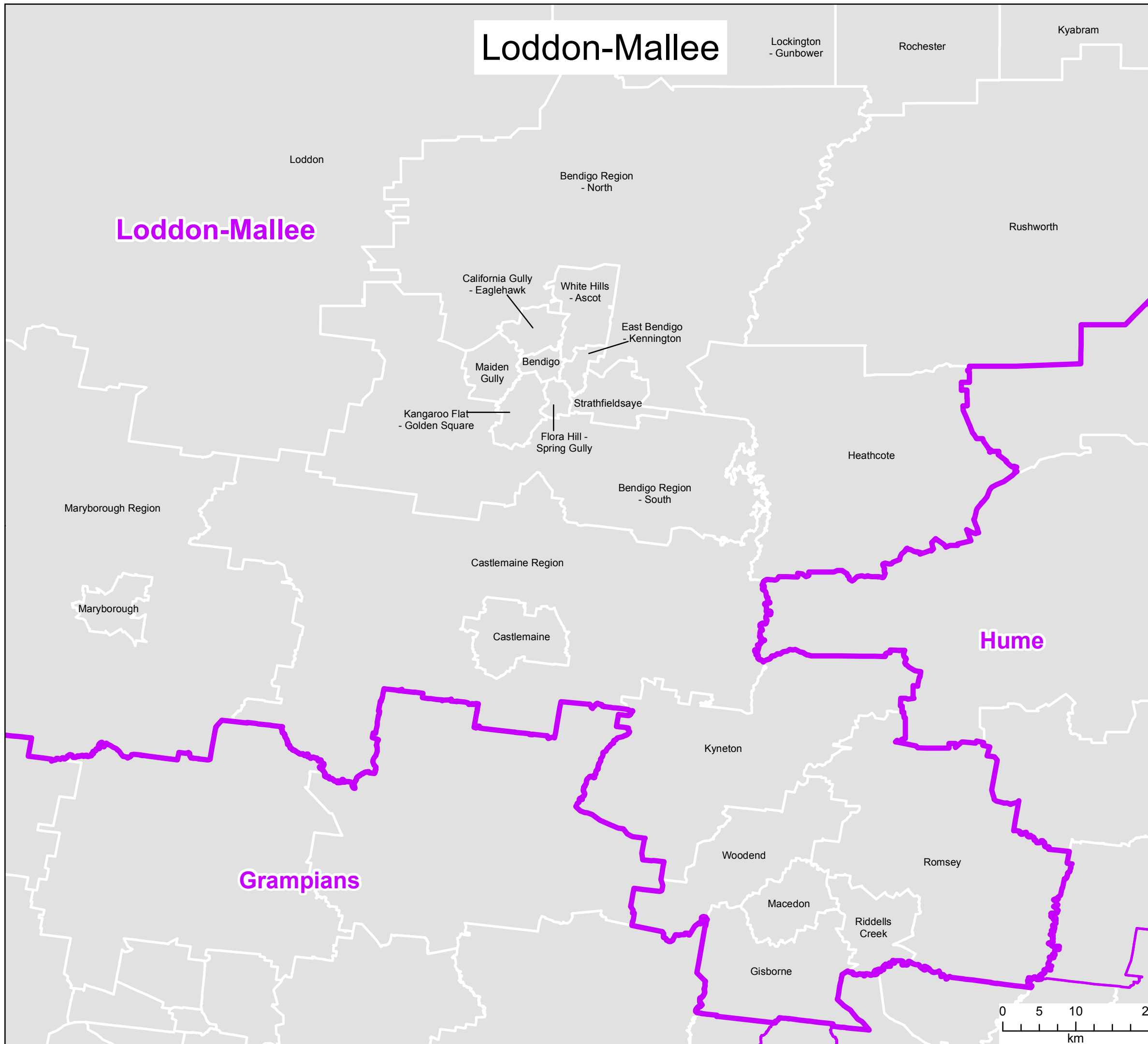
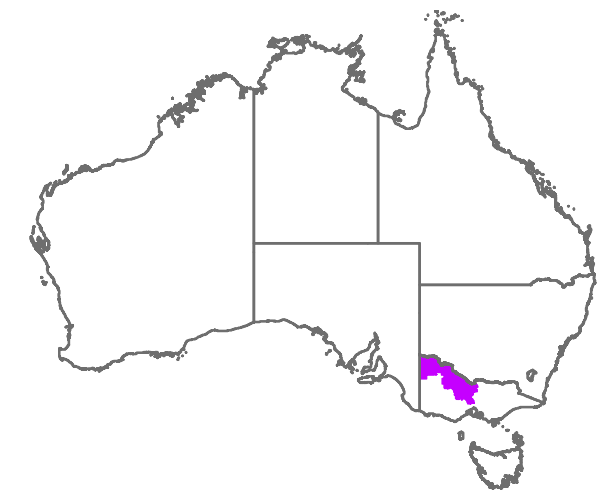
Australian Government

**Department of Health
Aged Care Planning
Regions displaying
Statistical Areas
Level 2 (SA2s)**



**Loddon-Mallee
Victoria**

Map 2 of 2

The Aged Care Planning Region boundaries displayed became effective in April 2018. They are based on Statistical Area Level 2 (SA2) boundaries from the Australian Bureau of Statistics Australian Statistical Geography Standard (ASGS) 2016.



Legend

-  Aged Care Planning Region 2018
-  Statistical Area Level 2 (SA2)

This map has been produced to be viewed as A3 - Landscape.