



Australian Government

Department of Health, Disability and Ageing

Transforming Aged Care Homes



Australian Government

Department of Health, Disability and Ageing

Transforming Aged Care Homes

Webinar Series: Home Matters - Rethinking Aged Care Design



Acknowledgment of Country

The Department of Health, Disability and Ageing and Dementia Training Australia would like to show our respect and acknowledge the traditional custodians of these lands. We extend this respect to Elders past and present, and to all Aboriginal and Torres Strait Islander people here today.



Artist: Brittney Angus

Housekeeping



Q&A



Participant
Audio/Video



Copy of Slides

Overview of Today's Session

- Practical strategies for transforming 'institutional' environments within existing building footprints
- How to prioritise and stage projects to achieve incremental improvements over time
- The importance of staff training



Host



Nick Seemann
Environments Specialist

Speakers



Elizabeth Paterson-Finlay

Project Manager and Registered Nurse
Banksia Villages



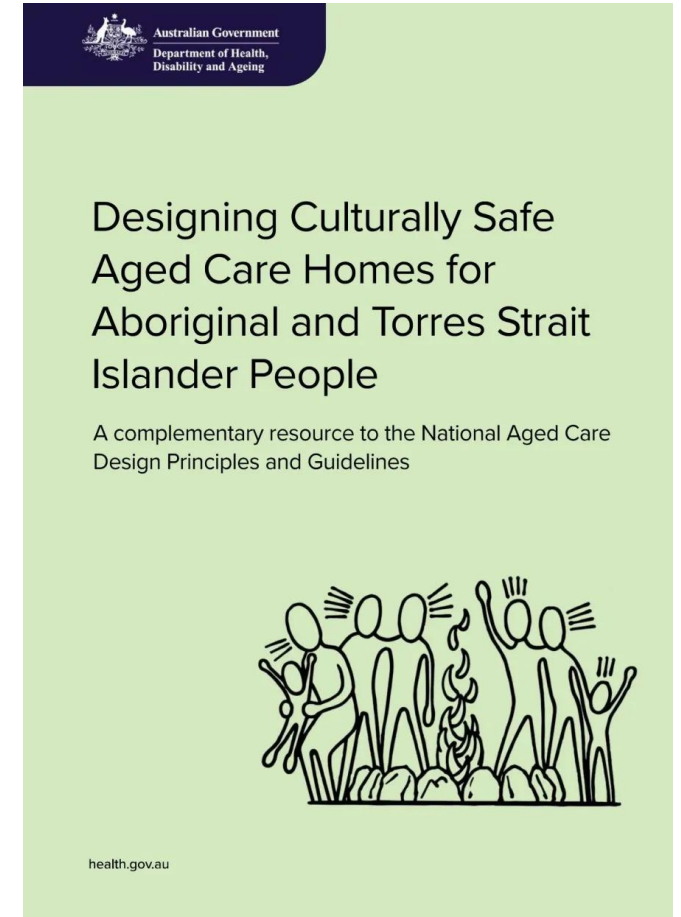
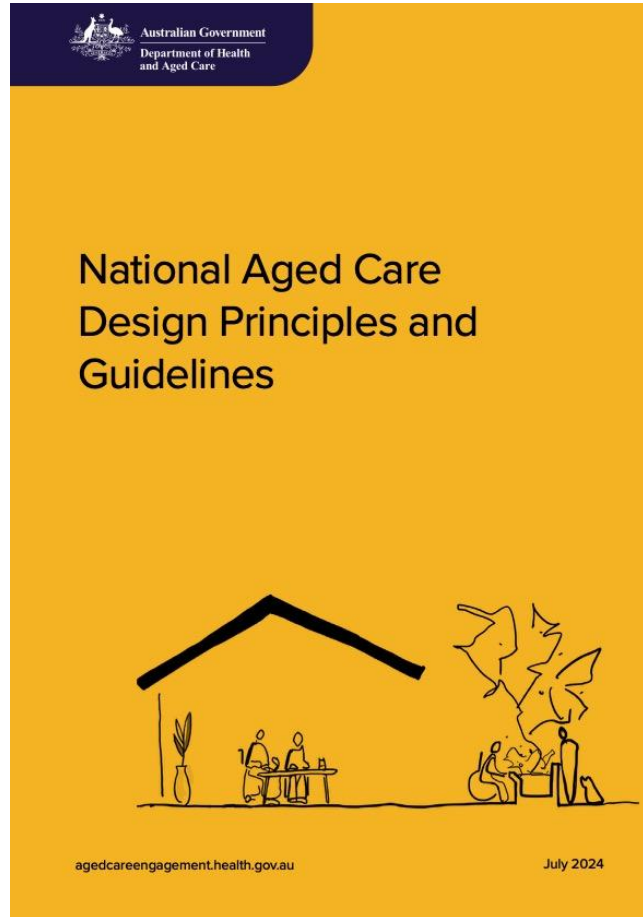
Lorraine Calder

Architect and Aged Care Design Specialist



Renee Mendes

Residential Aged Care Manager
Western NSW Local Health District



Visit health.gov.au and search 'Improving accommodation'

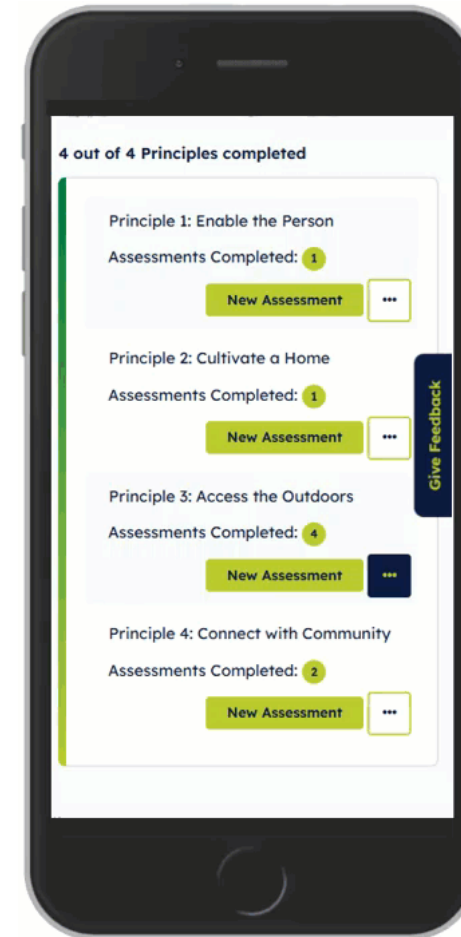
Care Home Assessment Tool (CHAT)



<https://dta.com.au/care-home-assessment-tool-chat/>

Care Home Assessment Tool (CHAT)

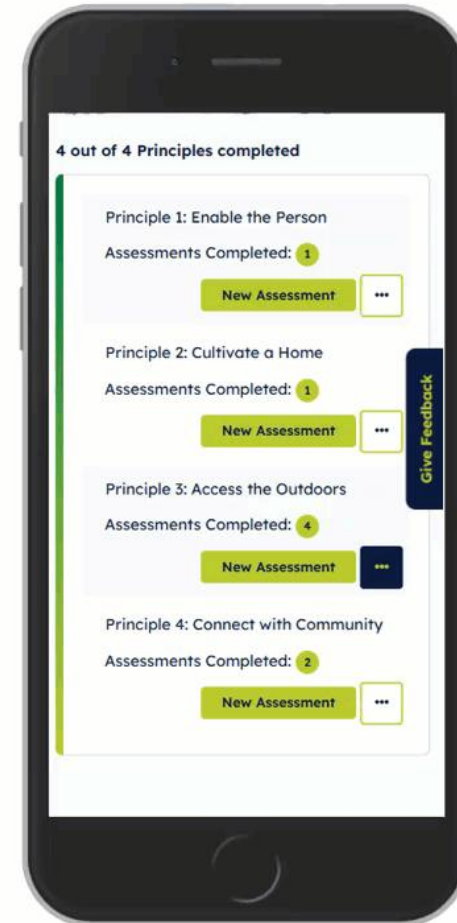
- **What Does It Do?**
 - Guides you through the 4 Design Principles
 - Assesses how well your care home meets each Guideline



<https://dta.com.au/care-home-assessment-tool-chat/>

Care Home Assessment Tool (CHAT)

- **What does it do?**
 - Identifies strengths and areas for improvement
 - Provides a holistic site report (by unit/wing/household)



<https://dta.com.au/care-home-assessment-tool-chat/>

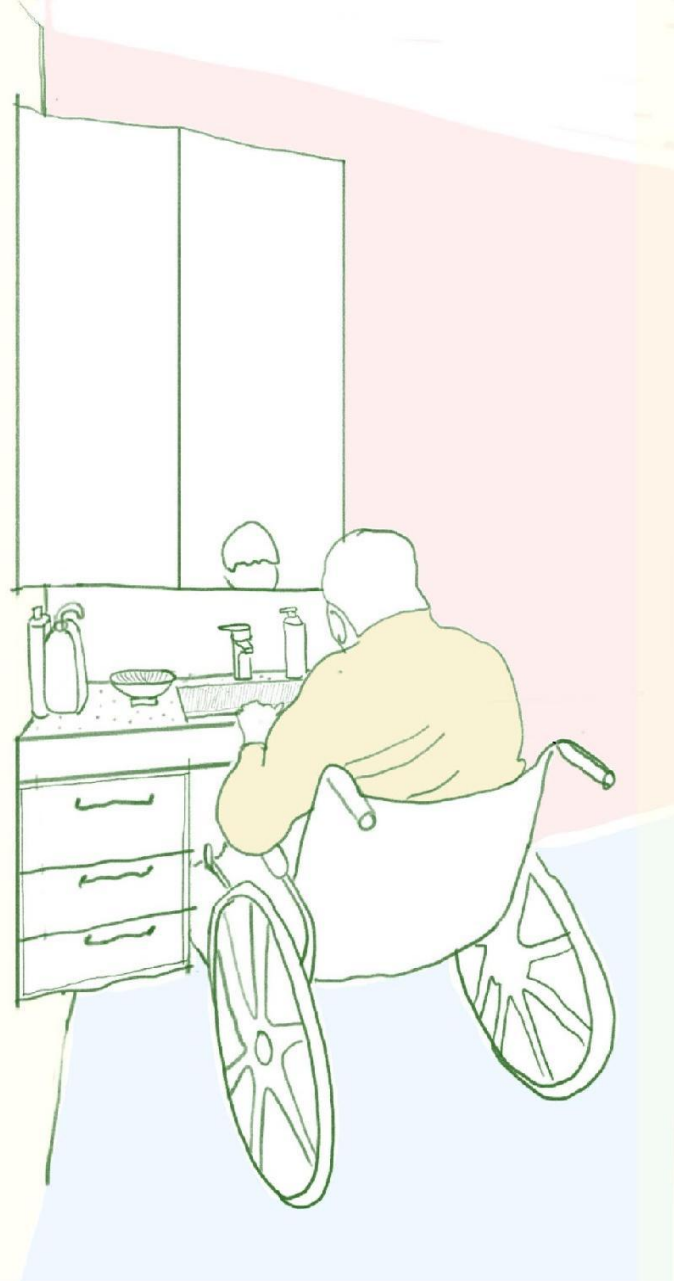
Setting up New Projects

The Principles and Guidelines in Practice

Lorraine Calder

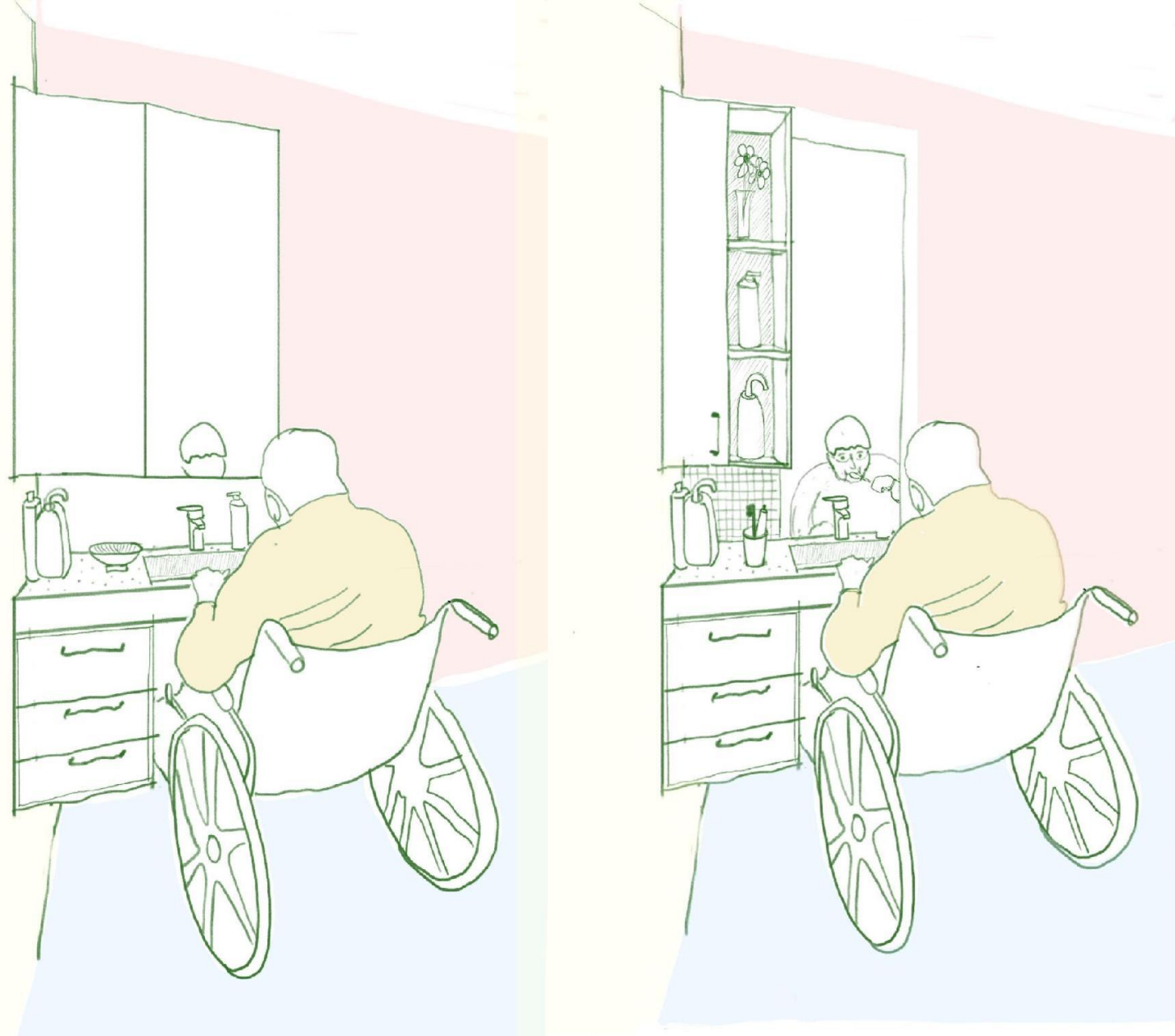
Architect and Aged Care Design Specialist





Principle 1
Enable the Person

Lived Experience



Principle 1
Enable the Person

Lived Experience





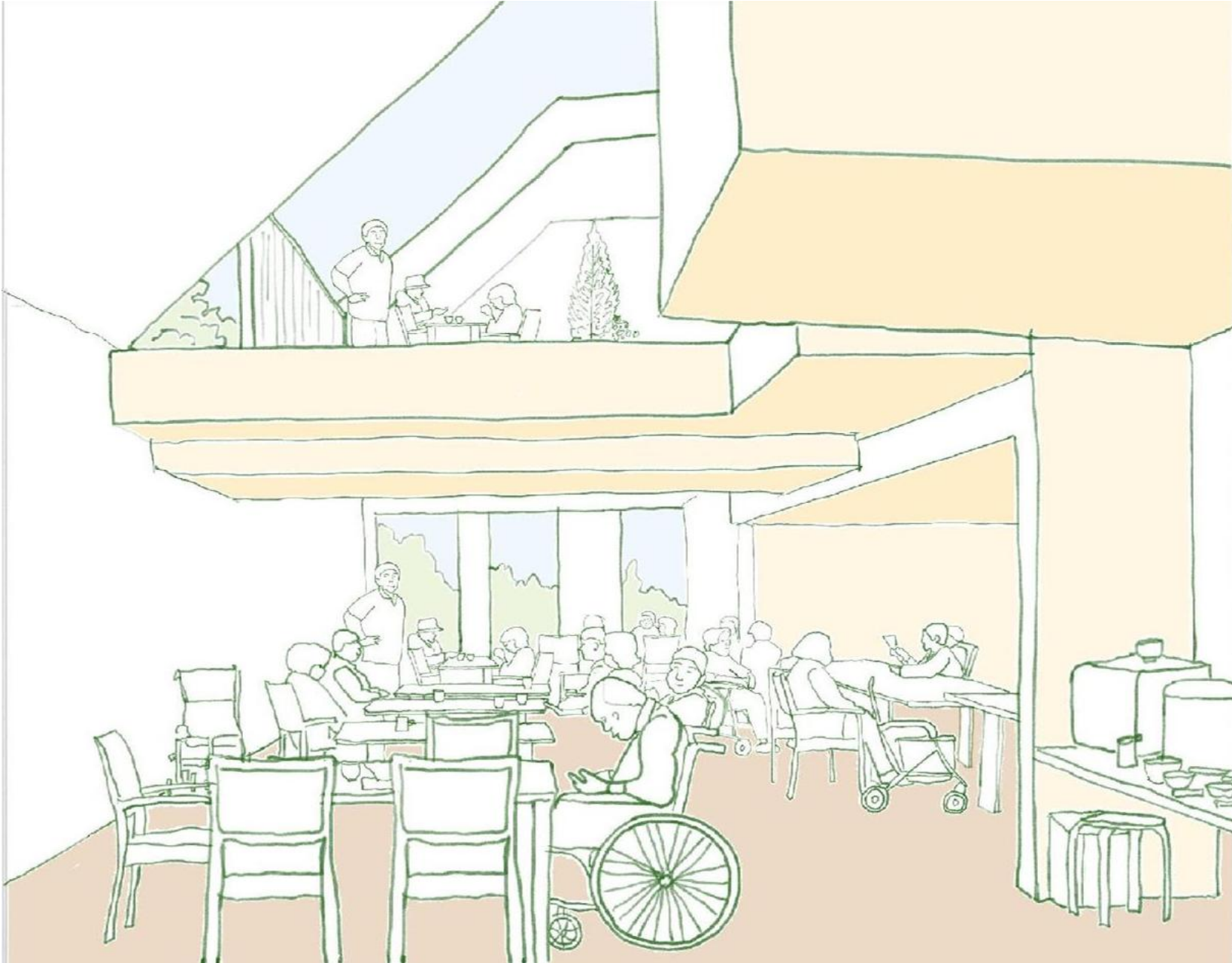
Principle 2
Cultivate a Home

Working Experience



Principle 3 **Access the Outdoors**

Literature Review



Principle 4
Connect with Community

Observations from Japan

Building Small Households Fixing Existing Buildings

Elizabeth Paterson-Finlay

Project Manager and Registered Nurse
Banksia Villages





Banksia's Story



**BANKSIA
VILLAGES**

Come home to Banksia



Principle 1: Enable the Person

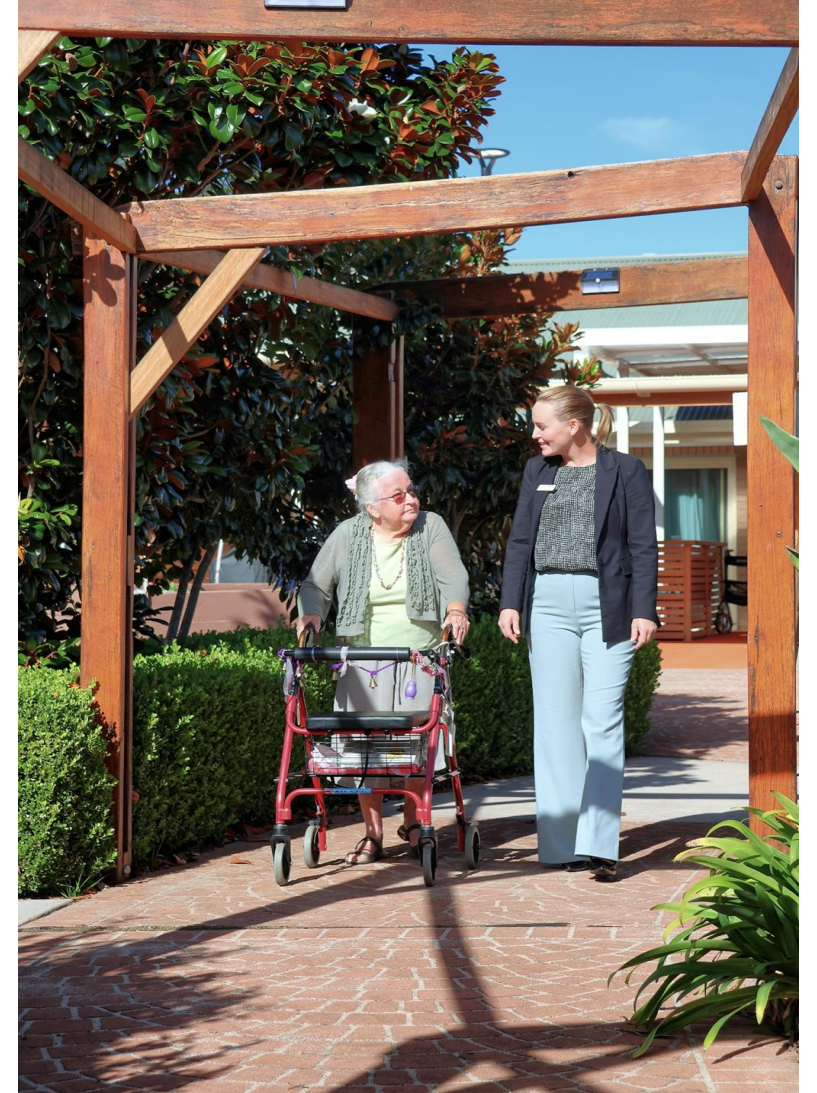




Principle 2: Cultivate a Home



Principle 3: Access the Outdoors





Principle 4: **Connect With Community**

A Small House Model of Care



From Hospitals to Homes Transitioning Culture and Buildings

Renee Mendes

Residential Aged Care Manager
Western NSW Local Health District

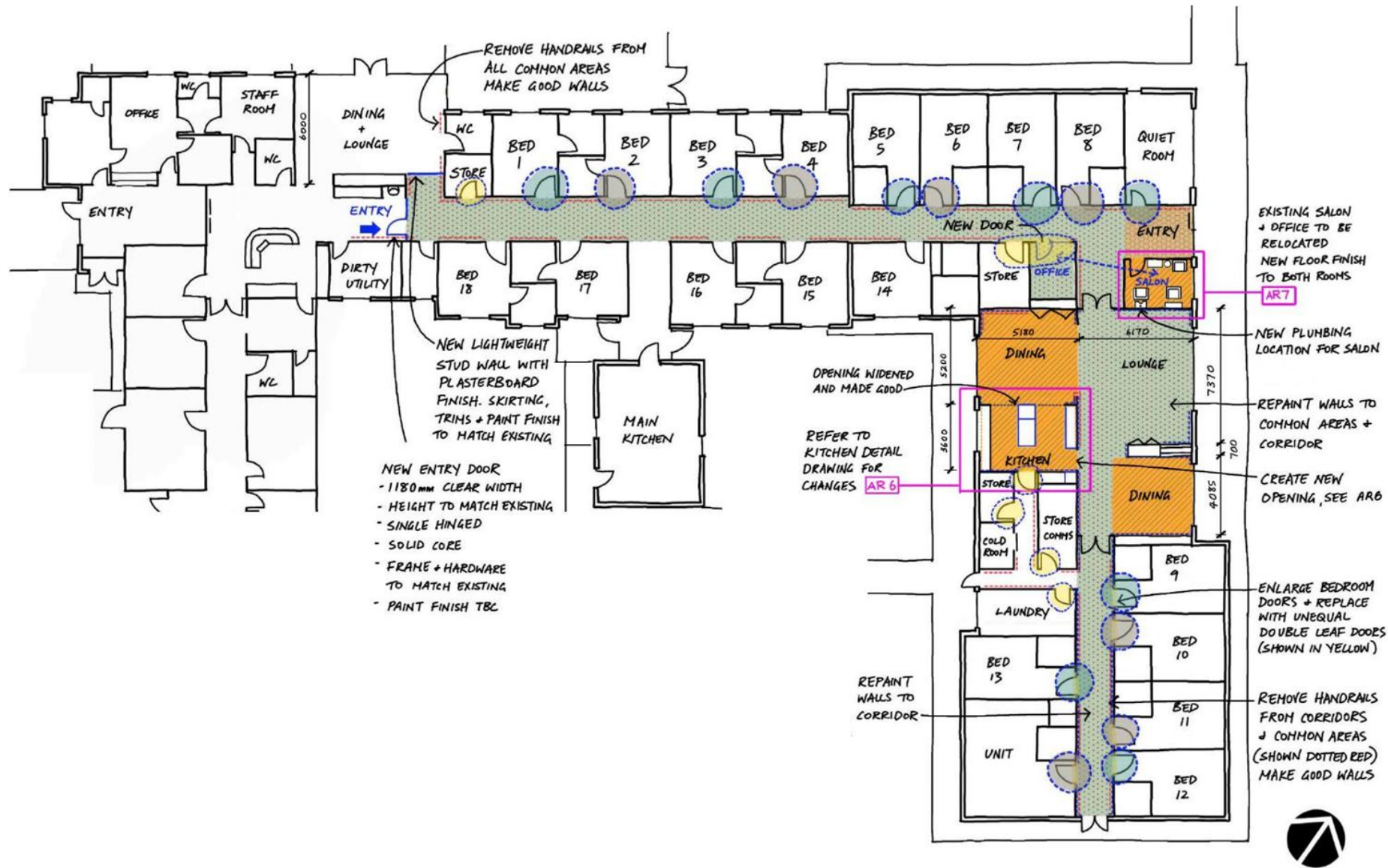


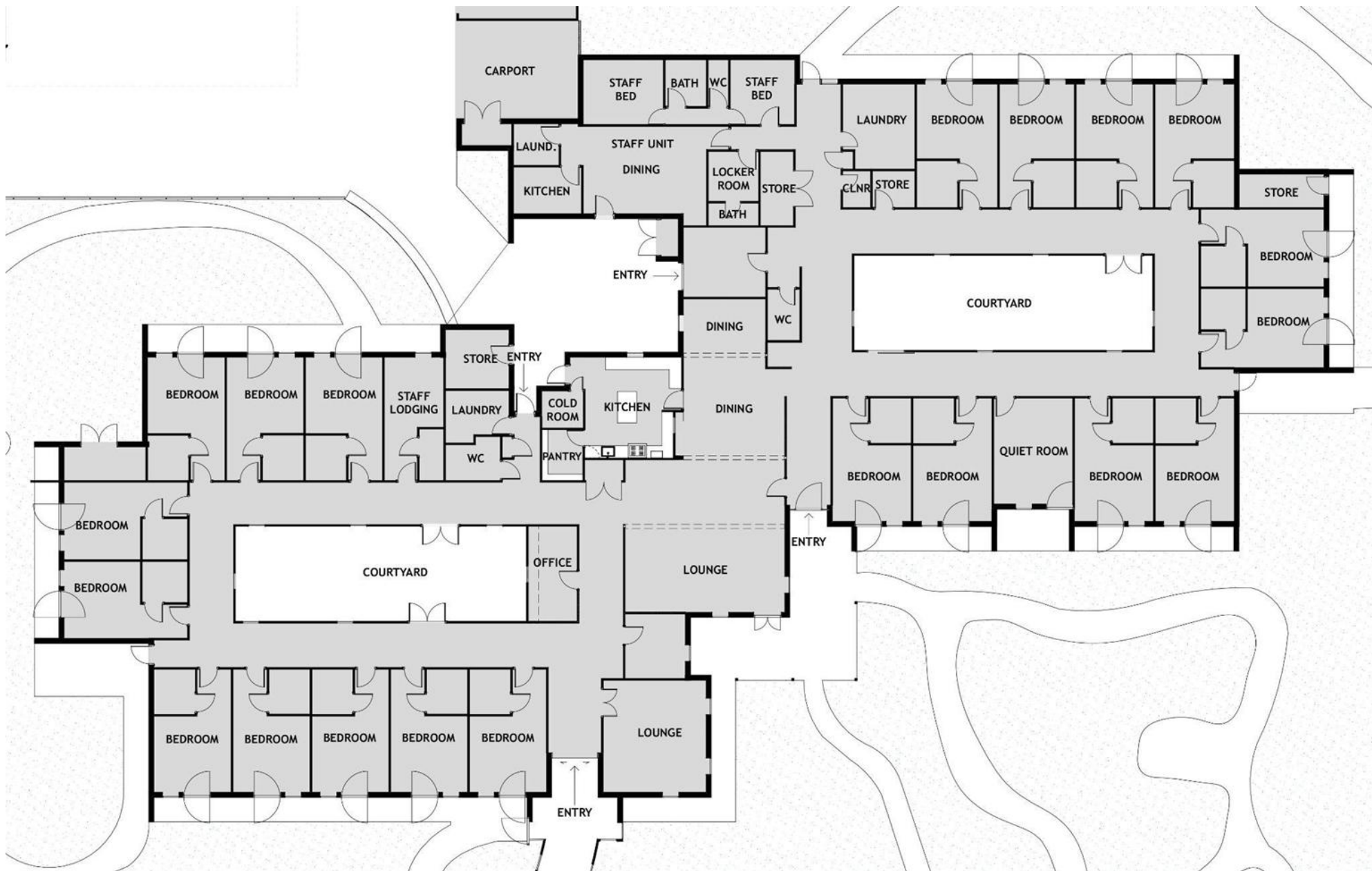
Multi-purpose Services

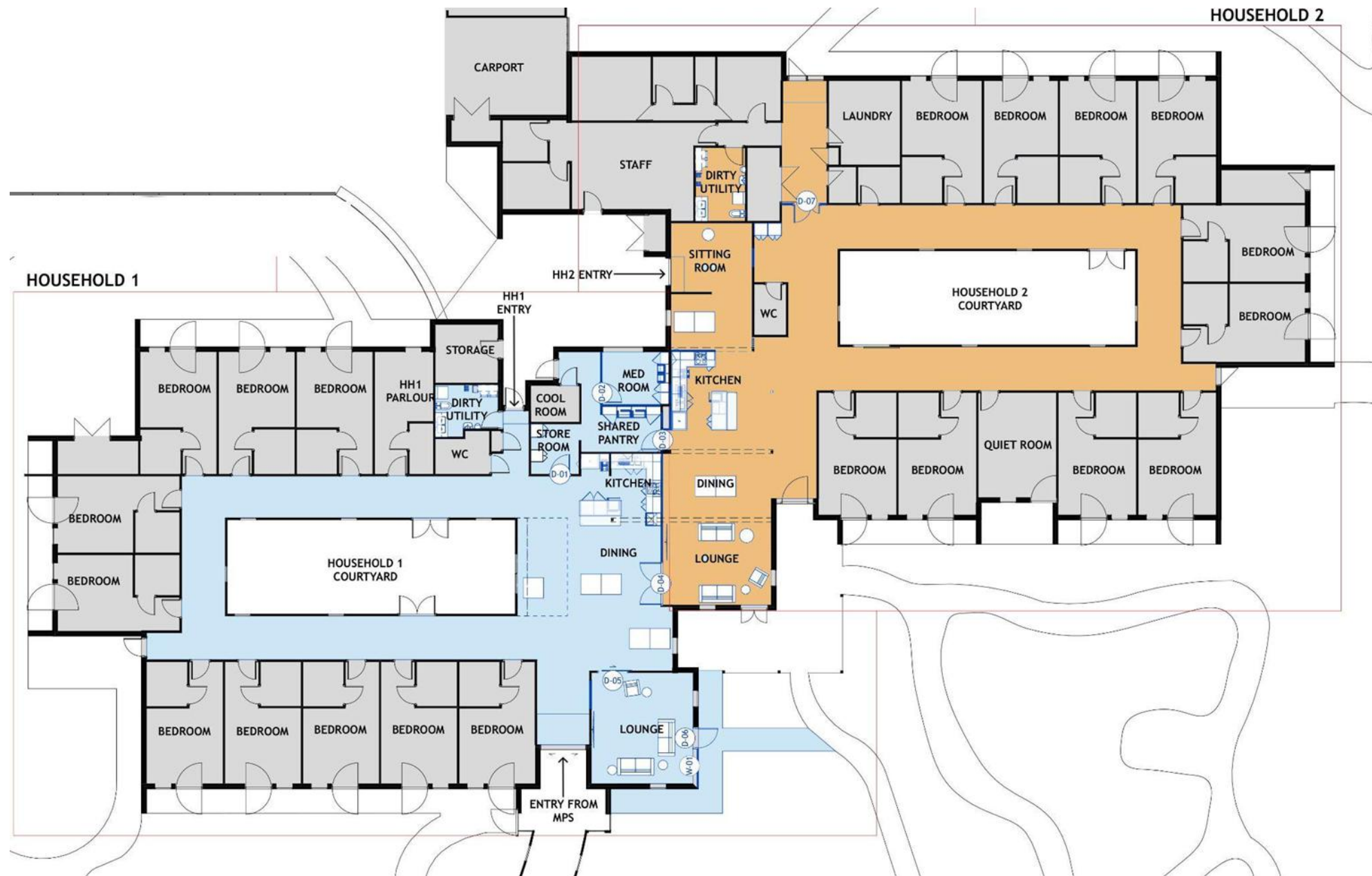
How do we make this transition?













Activity Card 1
Open a door and go outside

Encourage opportunities to get outside, be active and enjoy the fresh air.

Door easy to open Curtains pulled back

View of the garden set up with things to do

Somewhere to sit near the door

dta Dementia Training Australia

© 2015 DTA
Design Principle 3 | Access the Outdoors
Draft Australian Aged Care Design Principles and Guidelines
dta.com.au

Environments Hub



Q&A Discussion

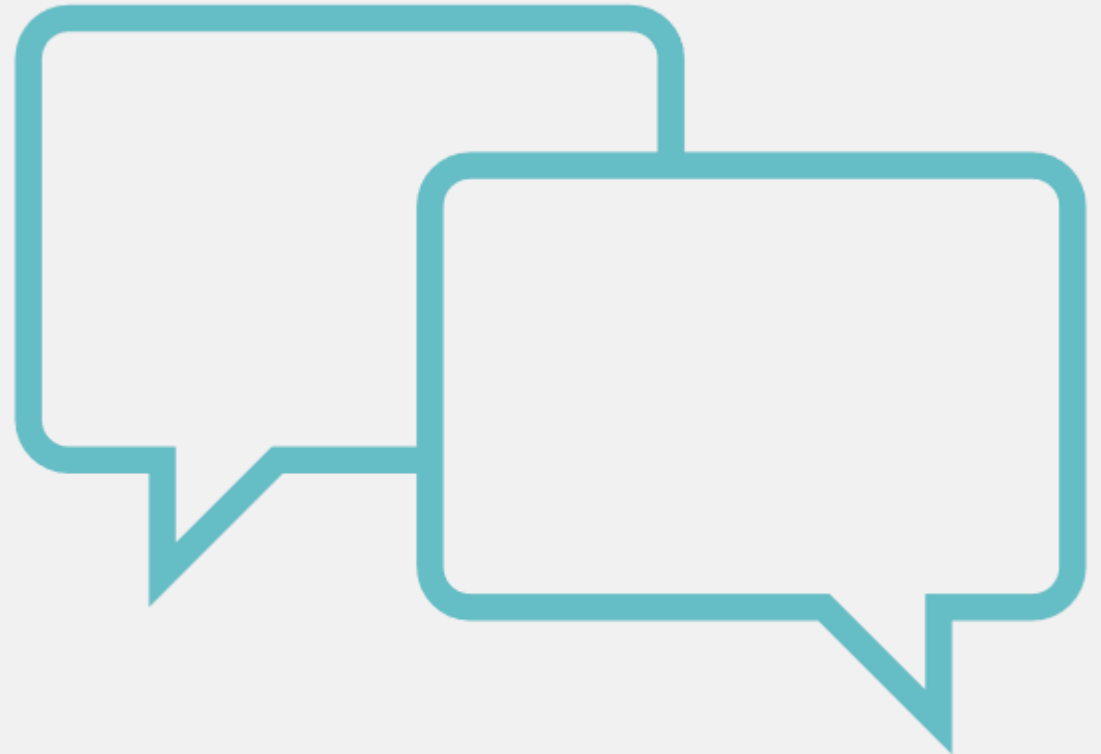


Photo Credits

1. Concept designs by Lorraine Calder, Architect (slides 13-14 & 16-18)
2. Australian Unity, Rathdowne Place Aged Care, VIC (slide 15)
3. Banksia Villages, Banksia Lodge, Broulee, NSW (slides 20-25)
4. DTA Environments Masterclass series (slide 28)
5. Multipurpose Services (MPS), Western NSW Local Health District (slides 27, 29-31)
6. DTA Environments Training Program deliveries (slide 32)



health.gov.au/aged-care-reforms



Phone **1800 200 422**
(My Aged Care's free call phone line)