

Vaccination Dashboards

User Guide



Australian Government

Department of Health, Disability and Ageing

www.health.gov.au

Purpose, Scope, Users, and Key Insights of the Dashboard

Purpose of This Dashboard

A national, self-service view of vaccination activity recorded in the Australian Immunisation Register (AIR) for key respiratory vaccines, including COVID-19, Influenza, and RSV.

The dashboard is designed to:

- Support evidence-based decision-making
- Reduce reliance on manual data requests
- Enable consistent and transparent reporting
- Improve access to timely national vaccination data



What Are We Showing Users?

- People vaccinated (number of individuals vaccinated)
- Doses administered (volume of vaccination activity)
- Vaccination coverage (proportion of eligible population vaccinated)
- Trends over time (weekly and monthly patterns)
- Vaccination delivery settings (where vaccines are administered)
- Population characteristics (age group, gender, First Nations status, antenatal status where applicable)

Intended Audience

- Policy and program teams
- Operational and surveillance staff
- Jurisdictional stakeholders
- Executive users requiring high-level insights

It supports both high-level oversight and detailed operational analysis.

How it's structured

Tabs (Summary, People Vaccinated, Doses, Coverage, Trends, Antenatal) using consistent data and filters

Summary Tab



COVID-19 vaccination summary:
This tile provides a high-level overview of COVID-19 vaccinations for the selected year, displaying the total number of people vaccinated and the estimated population coverage percentage.

Influenza vaccination summary:
This tile displays the total number of individuals vaccinated against Influenza and the corresponding coverage rate for the selected year. Coverage represents the proportion of the eligible population vaccinated.

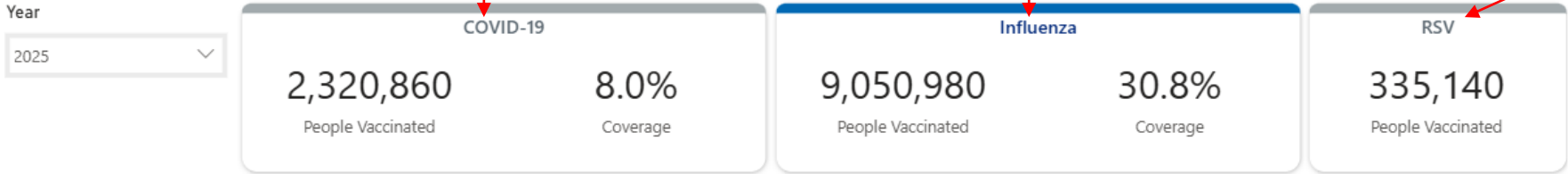
RSV vaccination summary:
This tile shows the total number of people who have received an RSV vaccine in the selected year. Coverage values may be displayed where a defined eligible population or program is still emerging.

Reporting year filter:
Select the calendar year you wish to view. The dashboard will display vaccination activity and coverage relevant to the selected year only.

Antigen selection:
Use this dropdown to select the respiratory vaccine of interest (for example, Influenza, COVID-19, or RSV). All values, charts, and coverage metrics on the dashboard update automatically based on the selected antigen.

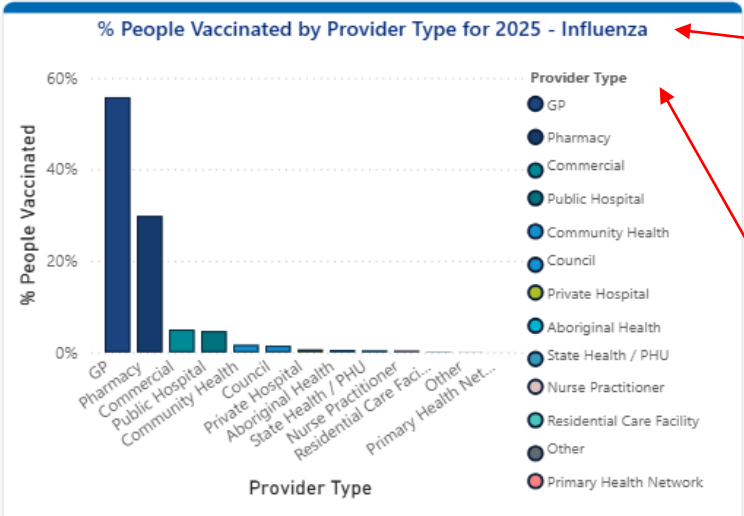
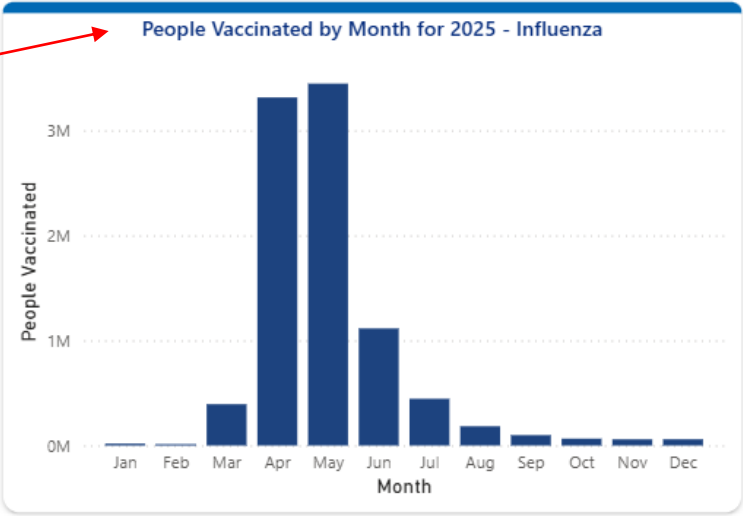
Monthly vaccination activity:
This chart shows the number of people vaccinated each month over the selected year. It allows users to identify seasonal trends, peak vaccination periods, and changes in uptake over time.

Monthly volume comparison:
Each bar represents the total number of people vaccinated in that month. Taller bars indicate higher vaccination activity, helping users quickly compare uptake between months.



Summary for Influenza

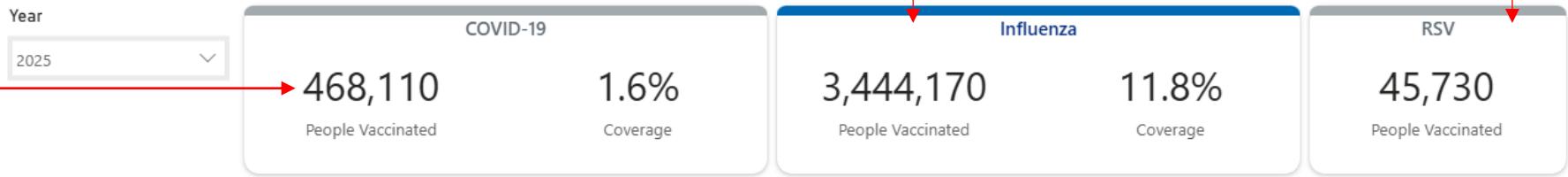
Antigen Name
Influenza



Vaccinations by provider type:
This chart shows the percentage of vaccinations delivered by different provider types (such as general practice, pharmacies, hospitals, and Aboriginal Health Services). Percentages reflect each provider's share of total vaccinations administered.

Provider categories:
Provider types are grouped by setting to support analysis of where vaccinations are being delivered.

Dashboard navigation:
Use these tabs to move between different sections of the dashboard, including Summary, People Vaccinated, Doses Administered, Coverage, Trends, and Antenatal views for more detailed analysis.

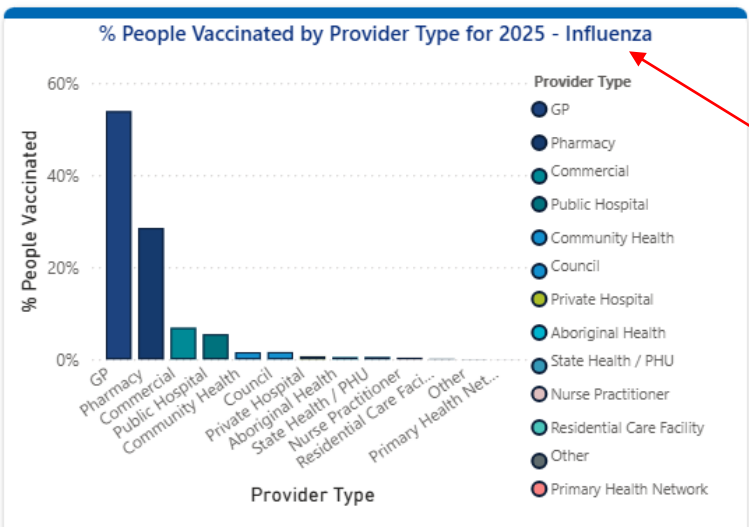
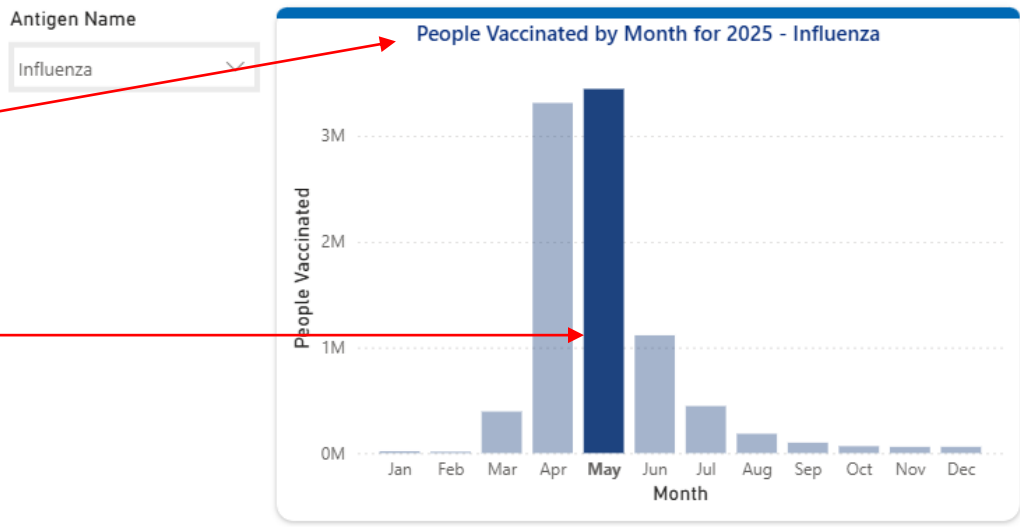


People vaccinated (Influenza):
 This value represents the total number of people vaccinated against Influenza in the selected year. It reflects cumulative vaccinations recorded in AIR for the chosen antigen and year.

People vaccinated (RSV):
 This number indicates the total count of individuals who have received an RSV vaccine in the selected year. RSV reporting may reflect program-specific eligibility and rollout timing.

People vaccinated (COVID-19):
 This figure shows the total number of individuals who have received at least one COVID-19 vaccine dose during the selected year, as recorded in the Australian Immunisation Register (AIR).

Summary for Influenza

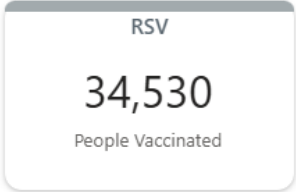
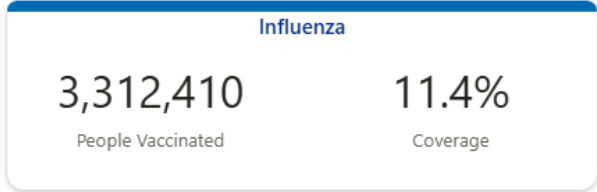
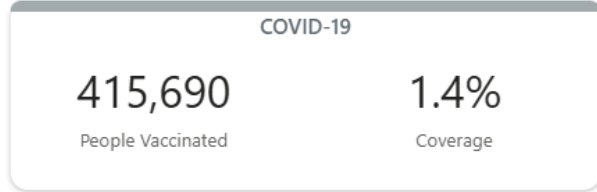


People vaccinated by month:
 This chart displays the number of people vaccinated each month across the selected year. It supports identification of seasonal vaccination patterns and peak delivery periods.

Monthly tooltip / selected bar value: Monthly vaccination detail:
 Hover over a bar to view the exact number of people vaccinated in a specific month. This provides precise monthly counts to support detailed analysis.

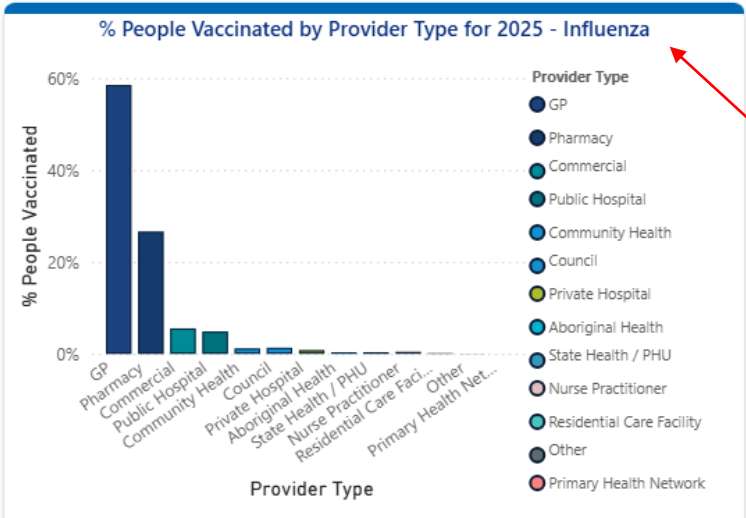
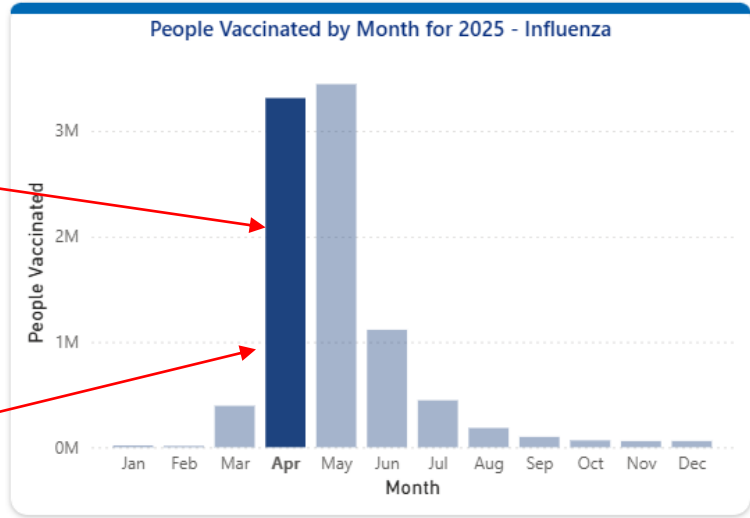
Vaccinations by provider type:
 This chart shows the proportion of vaccinations delivered by each provider type, expressed as a percentage of total vaccinations for the selected antigen and year.

Year
2025



Summary for Influenza

Antigen Name
Influenza



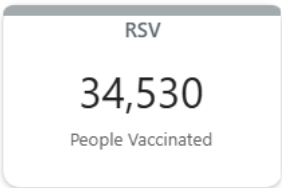
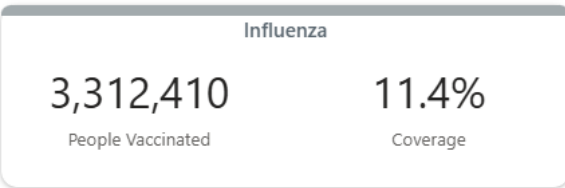
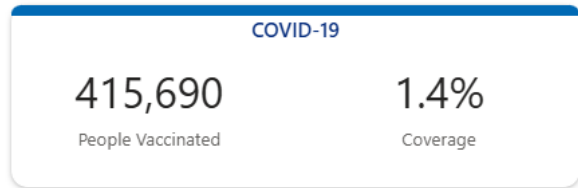
People Vaccinated by Month – overall trend:
This chart shows the total number of people vaccinated each month for the selected antigen and year. It allows users to quickly understand seasonal patterns in vaccine uptake and identify periods of increased or decreased vaccination activity across the year.

Interactive tooltip – exact values/Peak Month of Vaccination Activity:
Hovering over any bar displays a tooltip with precise figures, including the month and the exact number of people vaccinated. This allows users to explore the data in more detail without leaving the summary page. The tallest bar represents the month with the highest number of people vaccinated. In this example, May shows the peak vaccination period, reflecting increased uptake during the respiratory virus season.

Vaccination by Provider Type:
This chart shows the percentage of vaccinations delivered by each provider type, such as General Practice, pharmacies, or hospitals. It helps users understand where vaccinations are being administered and the relative contribution of different delivery settings.

Year Selection:
The Year filter enables users to choose the calendar year for analysis. Selecting a year updates vaccination counts, coverage values, and visualisations across the dashboard to display data for that period.

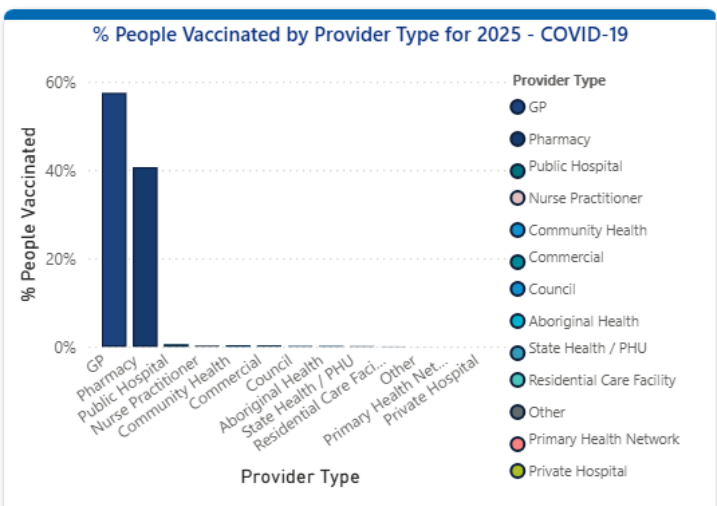
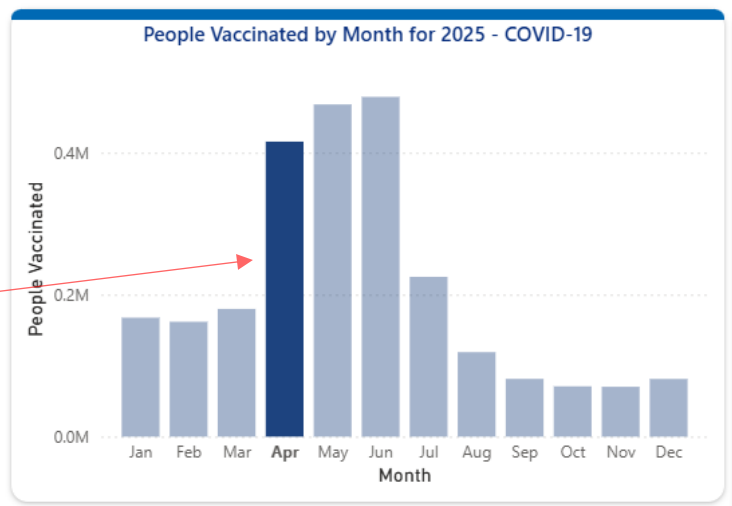
Year
2025



Antigen Selection:
The Antigen Name filter allows users to select the respiratory vaccine of interest (for example, COVID-19, Influenza, or RSV). All charts and summary metrics on the page update automatically to reflect the selected antigen.

Summary for COVID-19
Antigen Name
COVID-19

Selected Month in Trend Chart:
The dark-coloured bar indicates the currently selected month. Selecting a month highlights vaccination activity for that period and updates other visuals on the page where applicable, supporting more detailed exploration of vaccination trends.



People Vaccinated Tab



People Vaccinated Page:

This page provides detailed counts of people vaccinated, broken down by provider type, geography, and population characteristics. It supports more granular analysis beyond the summary view.

Advanced filtering panel:

Filters for Detailed Analysis. These filters enable users to refine the data by time period, geography, provider type, and population characteristics. Applying filters updates all visuals on the page, allowing targeted analysis for specific groups or locations.

Active navigation tab:

The highlighted tab indicates the current page within the dashboard. Users can navigate to other pages, such as Doses Administered, Coverage, or Trends, to explore different aspects of the data.

AUSTRALIAN IMMUNISATION REGISTER (AIR)

Respiratory Vaccine Dashboard

People Vaccinated

Australian Government
Department of Health, Disability and Ageing

Antigen Name: COVID-19

Year: 2025

Month: All

State Name, SA3 Name: All

Provider Type: All

Age Group: All

First Nations: All

Gender: All

Reset Filters

COVID-19

2,320,860
People Vaccinated

Influenza

9,050,980
People Vaccinated

RSV

335,140
People Vaccinated

People Vaccinated by State and Provider for 2025 - COVID-19

Provider Type	New South Wales	Victoria	Queensland	South Australia	Western Australia	Tasmania	Northern Territory	Australian Capital Territory	Other Territories	Total
Aboriginal Health	960	340	390	330	970	160	580	20	10	3,720
Commercial	2,890	1,100	400	250	290	90	10	1,240	10	6,240
Community Health	1,120	1,210	2,460	320	1,310	210	380	620	10	7,610
Council	40	2,200	20	2,130	10	20	10	10	10	4,400
GP	416,630	358,570	268,940	71,200	101,970	44,990	4,270	26,770	80	1,293,360
Nurse Practitioner	3,310	1,170	2,100	660	930	140	60	70	10	8,420
Total	674,350	599,920	457,370	181,710	245,150	86,130	8,360	67,770	140	2,320,860

When one or more SA3 are selected the aggregate for those SA3 are shown under the respective state column header

People Vaccinated by Age Group for 2025 - COVID-19

Age Group	People Vaccinated
0-4	~0.005M
5-9	~0.005M
10-14	~0.005M
15-19	~0.01M
20-24	~0.015M
25-29	~0.02M
30-34	~0.025M
35-39	~0.03M
40-44	~0.035M
45-49	~0.04M
50-54	~0.05M
55-59	~0.07M
60-64	~0.12M
65-69	~0.22M
70-74	~0.32M
75-79	~0.33M
80-84	~0.25M
85-89	~0.15M
90+	~0.1M

Summary | **People Vaccinated** | Doses Administered | Coverage | Trends | Antenatal

Data as at: 28/05/2026

Total column – national aggregation: National Totals - The Total column aggregates vaccination counts across all states and territories for each provider type, providing a national-level view of vaccination delivery. Due to rounding of values to the nearest 10, the sum of individual row values may not exactly match the displayed total.

People Vaccinated by Provider Type and Jurisdiction: This table breaks down the number of people vaccinated by provider type across states and territories. The Total column shows national totals, enabling comparison of vaccination delivery patterns across jurisdictions and provider settings.

People Vaccinated by Age Group: This chart shows the distribution of vaccinated people across age groups. It helps users understand which age cohorts have the highest vaccination uptake and identify population groups with lower coverage.

Geographic Selection (State / SA3):
This filter allows users to refine the data by state, territory, or SA3 geographic area. Selecting one or more locations updates all tables and charts on the page to display vaccination data for the chosen regions only.

Multiple Geographic Selections:
Users can select multiple states or territories at the same time. This enables comparison or aggregation of vaccination data across several jurisdictions within a single view.

Vaccination Uptake by Age Group: This chart shows the distribution of vaccinated people across age groups. It helps identify which age cohorts account for the highest vaccination volumes and supports analysis of uptake across the life course. Selecting an age group bar will filter the report to display data relevant to the selected age group.

Antigen Name
COVID-19

Year
2025

Month
All

State Name, SA3 Name
All

Search

- Select all
- New South Wal...
- Victoria
- Queensland
- South Australia
- Western Austra...

All

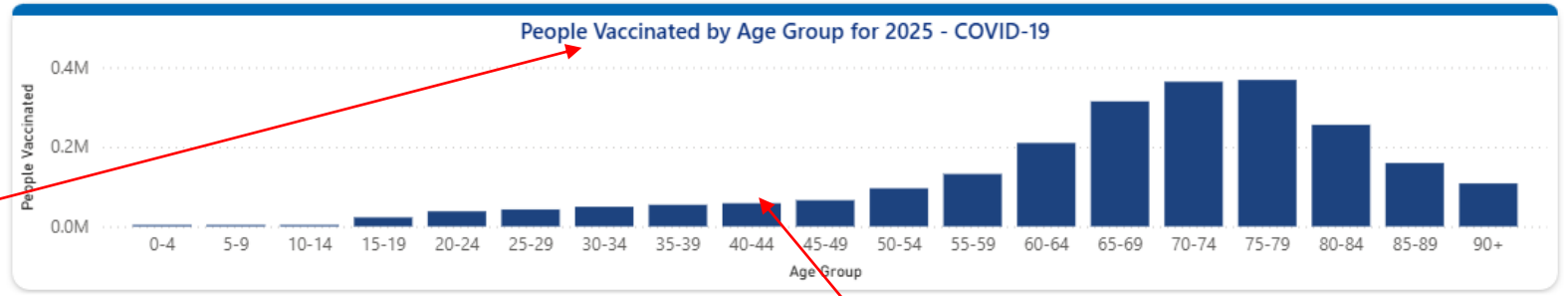
Reset Filters

COVID-19 2,320,860 People Vaccinated	Influenza 9,050,980 People Vaccinated	RSV 335,140 People Vaccinated
---	--	--

People Vaccinated by State and Provider for 2025 - COVID-19

Provider Type	New South Wales	Victoria	Queensland	South Australia	Western Australia	Tasmania	Northern Territory	Australian Capital Territory	Other Territories	Total
Aboriginal Health	960	340	390	330	970	160	580	20	10	3,720
Commercial	2,890	1,100	400	250	290	90	10	1,240	10	6,240
Community Health	1,120	1,210	2,460	320	1,310	210	380	620	10	7,610
Council	40	2,200	20	2,130	10	20	10	10	10	4,400
GP	416,630	358,570	268,940	71,200	101,970	44,990	4,270	26,770	80	1,293,360
Nurse Practitioner	3,310	1,170	2,100	660	930	140	60	70	10	8,420
Total	674,350	599,920	457,370	181,710	245,150	86,130	8,360	67,770	140	2,320,860

When one or more SA3 are selected the aggregate for those SA3 are shown under the respective state column header



People Vaccinated Page:
This page provides detailed counts of people vaccinated, broken down by provider type, geography, and population characteristics. It supports more granular analysis beyond the summary view.

Monthly tooltip / selected bar value: Monthly vaccination detail:
Hover over a bar to view the exact number of people vaccinated in a specific month. This provides precise monthly counts to support detailed analysis.

Coverage tab



Antigen Name
 Influenza

Year
 2025

Month
 All

State Name, SA3 Name
 All

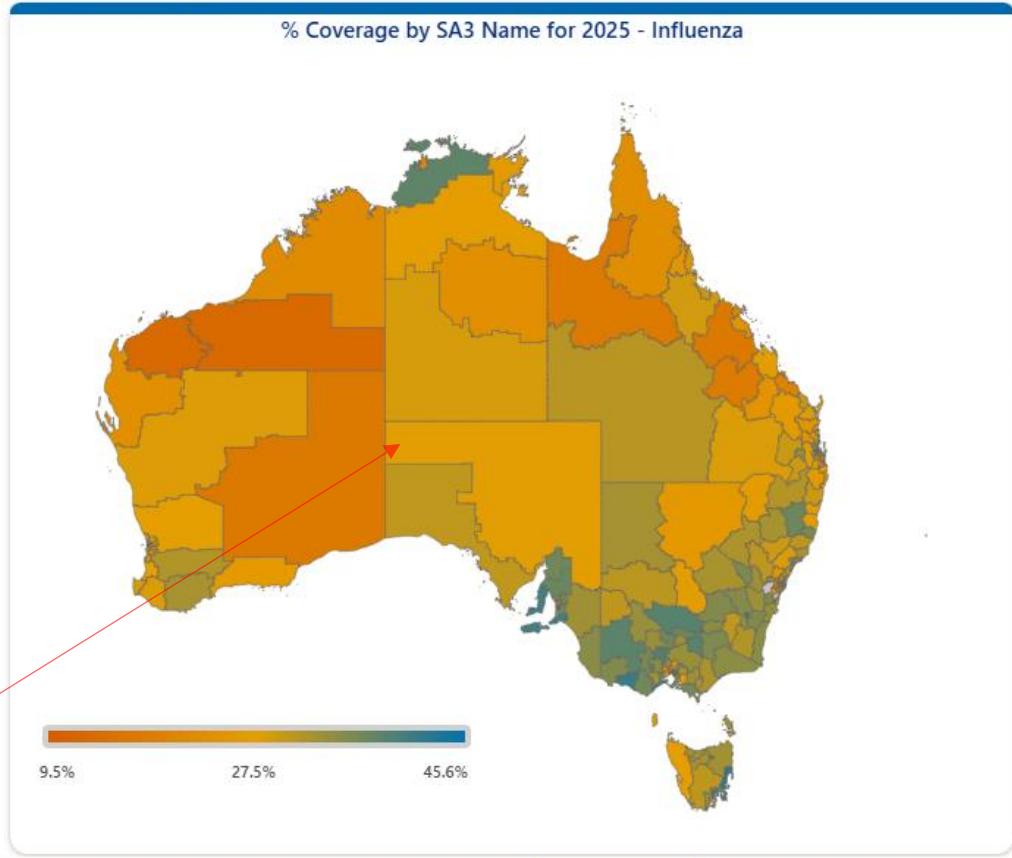
Provider Type
 All

Age Group
 All

First Nations
 All

Gender
 All

Reset Filters



State Name	% Coverage
New South Wales	29.4%
Victoria	32.8%
Queensland	28.9%
South Australia	35.3%
Western Australia	28.8%
Tasmania	36.7%
Northern Territory	27.1%
Australian Capital Territory	40.2%
Total	30.8%

SA3 Name	% Coverage
Adelaide City	37.6%
Adelaide Hills	36.2%
Albany	32.4%
Albury	34.6%
Alice Springs	28.8%
Armadale	25.4%
Armidale	36.9%
Auburn	24.3%
Augusta - Margaret River - Busselton	28.8%
Bald Hills - Everton Park	38.8%
Ballarat	29.5%
Total	30.8%

Geographic Selection (State and SA3) Filter: This filter allows users to select a state, territory, or SA3 geographic area. All coverage visuals and tables on the page update automatically to reflect the selected location(s).

Month / Age Group selection (expanded slicer): This checklist allows users to select specific age groups to include in the analysis. Users can choose individual age bands or use "Select all" to include the full population. All dose counts, tables, and charts update automatically based on the selected age groups.

Coverage by SA3 Map: This map displays vaccination coverage percentages by SA3 geographic area. Each region is shaded to reflect its coverage level, enabling users to quickly identify geographic variation in vaccination coverage across Australia..

State-level coverage table: Coverage by State or Territory - This table shows vaccination coverage percentages at the state and territory level. It provides a summary view that supports comparison of coverage across jurisdictions.

SA3-level coverage table: Coverage by SA3 Area - This table provides vaccination coverage percentages for individual SA3 areas. It supports more detailed, local-level analysis of coverage patterns within and across states.

Active navigation tab – Coverage: The highlighted Coverage tab indicates that the user is currently viewing the Coverage page. Users can navigate to other pages, such as Summary, People Vaccinated, Doses Administered, or Trends, to explore different views of the data.

Antigen Name
Influenza

Year
2025

Month
All

State Name, SA3 Name
All

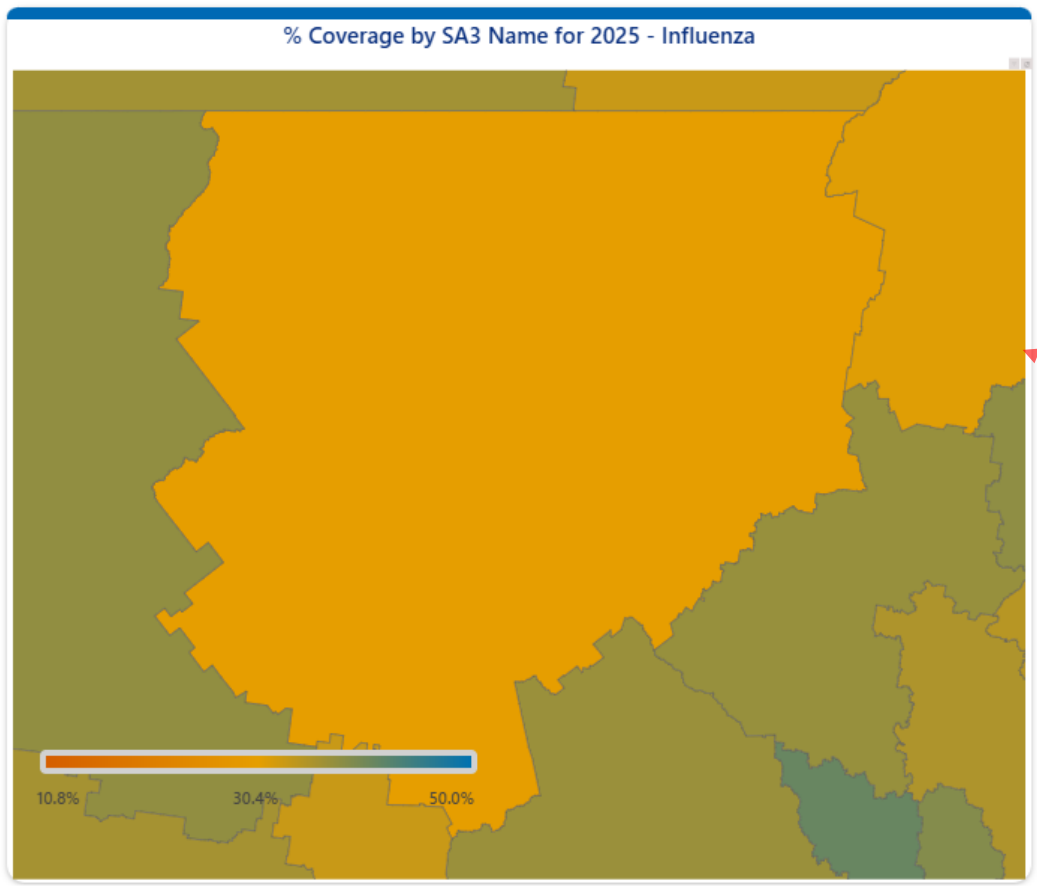
Provider Type
All

Age Group
All

First Nations
All

Gender
Female

Reset Filters



State Name	% Coverage
Australian Capital Territory	44.7%
Northern Territory	30.9%
Tasmania	41.5%
Western Australia	32.9%
South Australia	40.2%
Queensland	32.8%
Victoria	37.5%
New South Wales	35.1%
Total	35.1%

SA3 Name	% Coverage
Adelaide City	41.1%
Adelaide Hills	40.5%
Albany	36.5%
Albury	39.8%
Alice Springs	32.8%
Armadale	29.5%
Armidale	41.5%
Auburn	27.9%
Augusta - Margaret River - Busselton	32.4%
Bald Hills - Everton Park	43.2%
Ballarat	44.2%
Total	35.1%

Selected SA3 Area: The highlight indicates the SA3 area currently selected by the user. This selection drives the value displayed in the tooltip.

Zoomed SA3 map view: Detailed Geographical View (SA3 Level)- This map displays a zoomed-in view of a selected SA3 area, allowing users to examine vaccination coverage at a more detailed geographical level. **SA3 Coverage Details (Tooltip)** Hovering over an SA3 area displays a tooltip showing the SA3 name and the corresponding vaccination coverage percentage. This enables users to view precise coverage values for individual SA3 areas.

Antigen Name
 Influenza

Year
 2025

Month
 All

State Name, SA3 Name
 Victoria

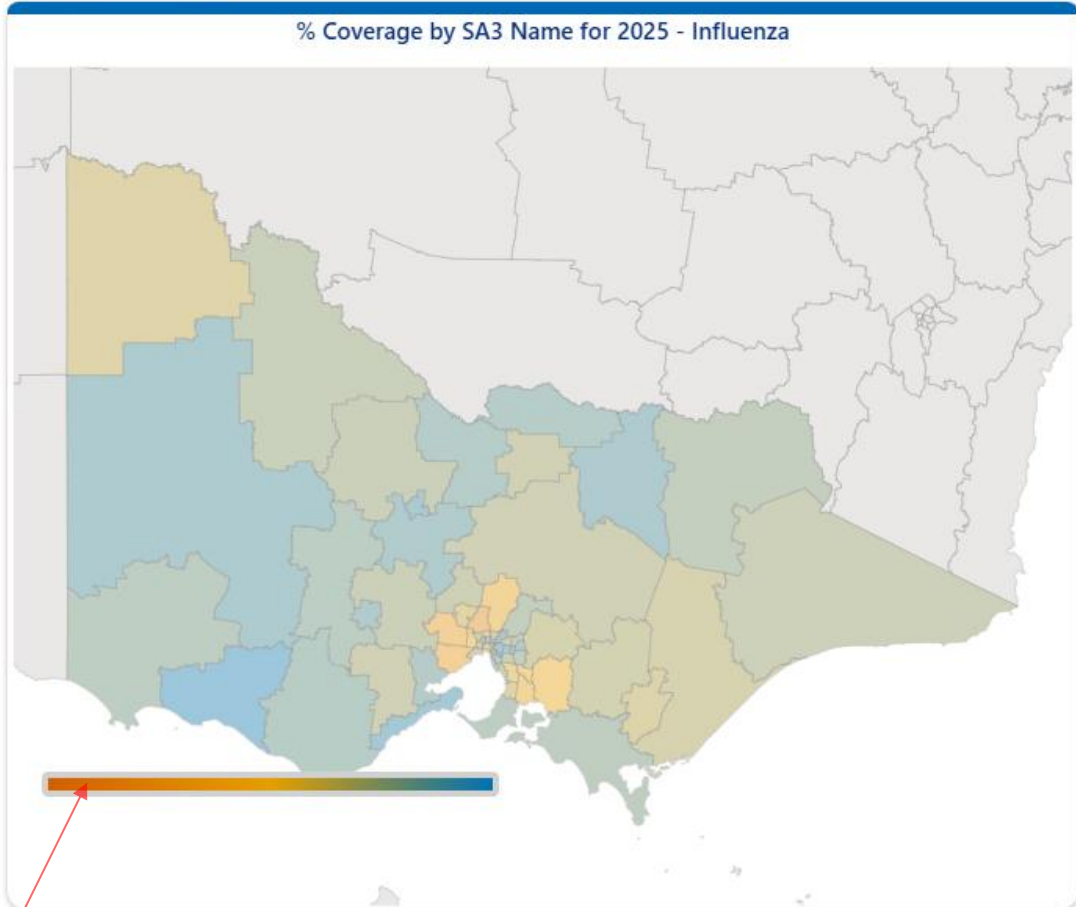
Search

- Select all
- New South Wal...
- Victoria
- Queensland
- South Australia
- Western Austra...

Female

Geographic Selection (State and SA3) Filter: This filter allows users to select one or more states, territories, or SA3 areas. In this example, Victoria is selected, and all coverage visuals on the page update to show results for Victoria only.

Gender filter – Female selected: This filter allows users to refine coverage data by gender. Selecting a specific option updates the map and tables to display coverage for the selected population group only.



Coverage by SA3 Map: % Coverage by SA3 (Victoria) - This map displays vaccination coverage percentages by SA3 areas within the selected state. Shading allows users to quickly identify geographic variation in coverage across Victoria.

State Name	% Coverage
▼	

State-level coverage table – Victoria: This table shows vaccination coverage at the state level. When a single state is selected, the table displays coverage for that state along with the overall total for the current filter selections.

SA3 Name	% Coverage
▲	

Antigen Name
 Influenza

Year
 2025

Month
 All

State Name, SA3 Name
 Victoria

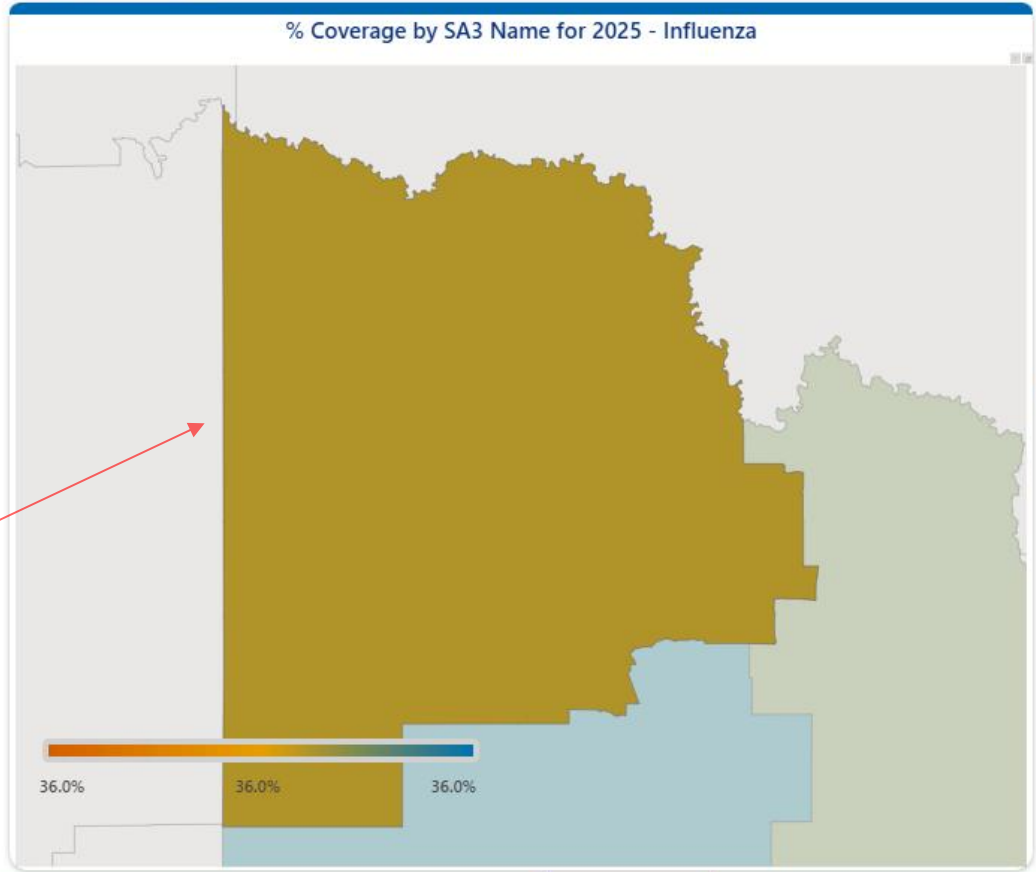
Provider Type
 All

Age Group
 All

First Nations
 All

Gender
 Female

Reset Filters



State Name	% Coverage
Victoria	36.0%
Total	36.0%

SA3 Name	% Coverage
Mildura	36.0%
Total	36.0%

Selected SA3 area on the map (Mildura): The highlighted area on the map represents the SA3 currently selected by the user. In this example, Mildura is selected, and all coverage values shown on the page reflect this SA3 only.

SA3-level coverage table - selected row: This row highlights the SA3 currently selected on the map. The percentage shown represents vaccination coverage for that SA3 based on the current filter selections.

SA3-level coverage table - other areas: The remaining rows display vaccination coverage for other SA3 areas within the selected state, supporting comparison between local areas.

Trends tab





Geographic Selection (State and SA3) Filter: This filter allows users to select one or more states, territories, or SA3 areas. In this example, Victoria is selected, and all coverage visuals on the page update to show results for Victoria only.

Antigen Name

Influenza

Year

2025

Month

All

State Name, SA3 Name

Victoria

Provider Type

All

Age Group

All

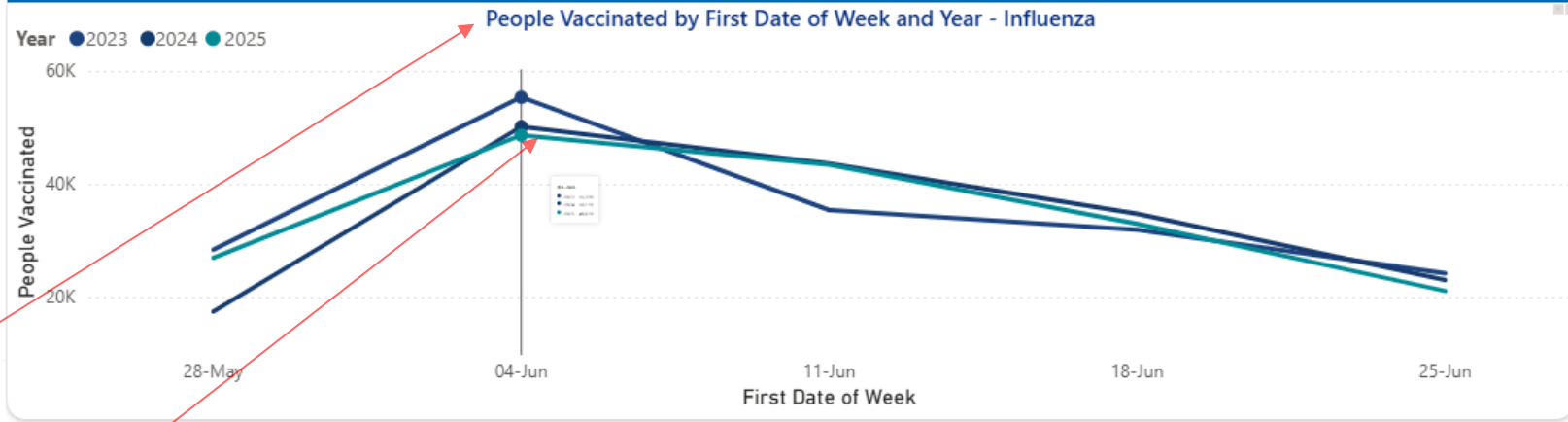
First Nations

All

Gender

Female

Reset Filters



Month	Aboriginal Health	Commercial	Community Health	Council	GP	Nurse Practitioner	Other	Pharmacy	Primary Health Network	Private Hospital	Public Hospital	Residential Care Facility
January	10	60	20	570	1,580	10	10	830	10	10	520	10
February	10	10	20	300	990	10	10	670	10	10	390	10
March	10	1,730	240	260	24,310	50	10	16,860	10	340	160	10
April	470	25,130	1,760	16,590	307,170	2,080	180	123,880	10	6,340	33,820	140
May	900	32,590	2,760	25,080	313,700	2,500	170	130,400	10	8,430	47,060	120
June	360	1,560	620	6,160	98,740	440	70	52,660	10	770	11,340	10
July	180	80	320	3,480	38,530	190	40	18,080	10	440	3,740	10
August	60	20	140	2,120	15,750	70	20	6,740	10	250	1,920	10
Total	2,030	61,150	6,000	54,710	813,360	5,390	520	359,160	10	16,560	101,410	270

Doses by Provider Type Table : This table shows the number of doses administered by each provider type across months. It provides a detailed breakdown of service delivery over time.

Weekly vaccination trends: This chart displays the number of people vaccinated by week, allowing users to monitor how vaccination activity changes over time.

Peak vaccination activity: Peaks in the chart indicate periods of highest vaccination activity, typically aligned with seasonal vaccination campaigns such as the annual influenza program.

Reset filters: Select this button to clear all applied filters and return the dashboard to its default settings.

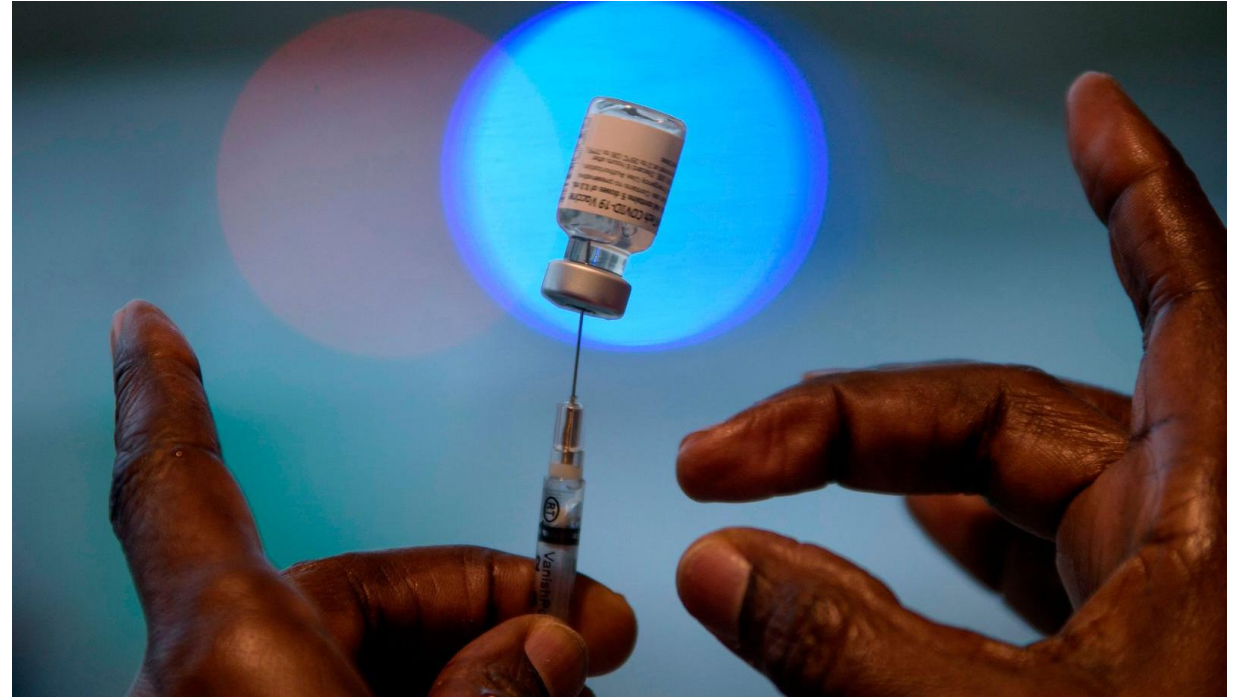
Unique Dashboard Pages

- Antenatal Tab – Respiratory Dashboard
- Trends – Adolescents Dashboard
- First Nations – Older Australians
- Demographics – Adolescents
- Geography – Childhood



Respiratory Vaccine Dashboard

Antenatal Tab



Peak Antenatal Vaccination Periods: This chart shows the number of people vaccinated by week and year across the selected year(s). It provides a detailed view of how antenatal vaccination activity changes over time.

Year-on-year comparison trend: Multiple lines allow comparison of vaccination trends across different years, helping identify changes in timing, peak activity periods, and overall uptake.

Weekly Antenatal Vaccination Trend: This chart shows the number of antenatal patients vaccinated by week, based on the first date of each week. It allows users to monitor changes in antenatal vaccination activity over time.

Antenatal Vaccinations by Provider Type: This table shows the number of antenatal vaccinations delivered by each provider type. This table displays the number of vaccinations delivered by each provider type across states and territories.

Antigen Name
 Influenza

Year
 2025

Month
 All

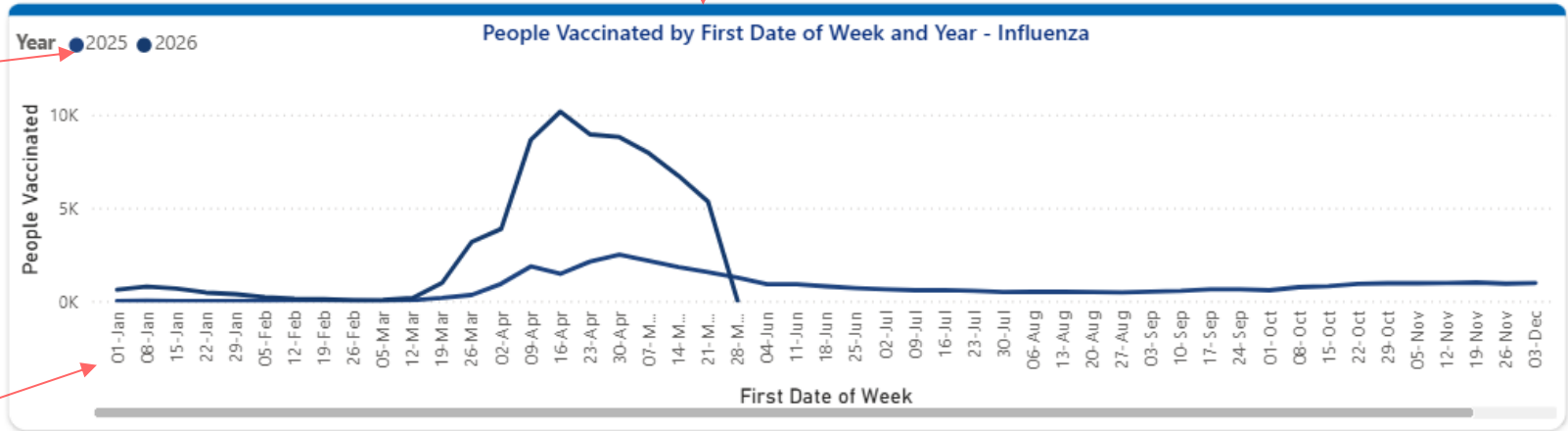
State Name, SA3 Name
 All

Provider Type
 All

Age Group
 All

First Nations
 All

Reset Filters

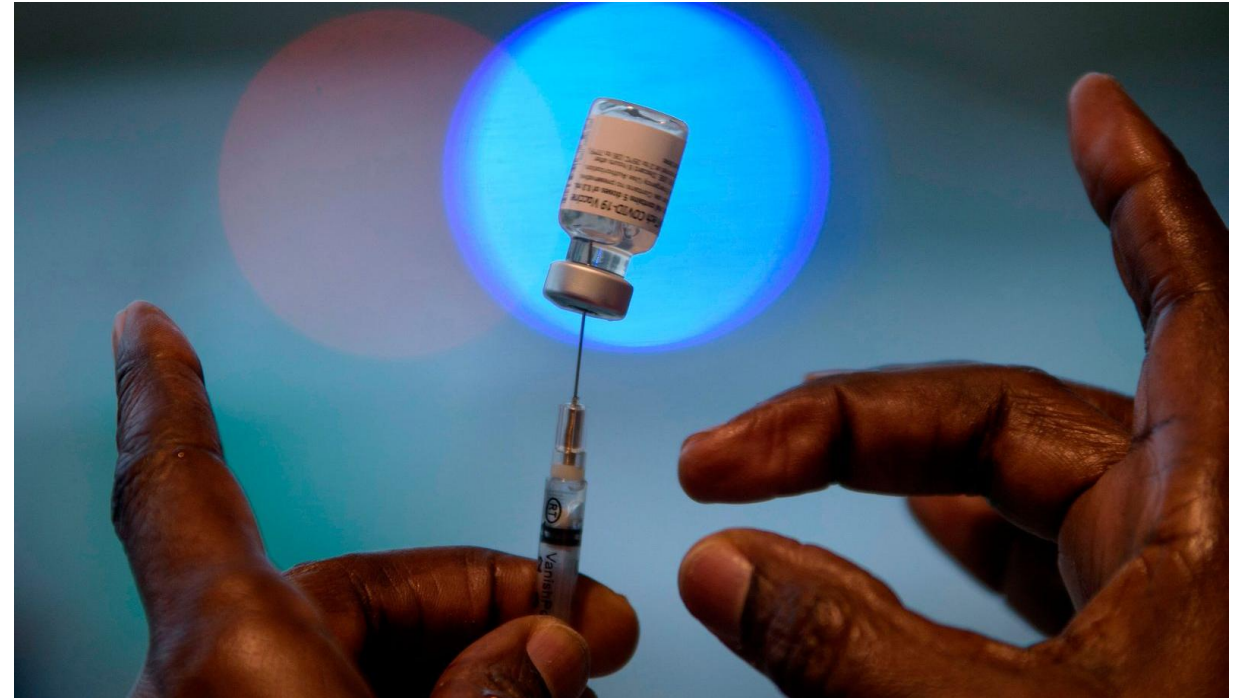


Provider Type	New South Wales	Victoria	Queensland	South Australia	Western Australia	Tasmania	Northern Territory	Australian Capital Territory	Other Territories
Aboriginal Health	60	30	20	20	40	10	50	10	10
Commercial	50	100	60	20	80	10	10	20	10
Community Health	510	110	750	30	550	10	30	10	10
Council	10	210	90	50	10	10	10	10	10
GP	3,020	3,300	2,320	890	900	330	130	330	10
Nurse Practitioner	50	20	10	10	10	10	10	10	10
Other	80	230	220	50	160	10	10	10	10
Pharmacy	920	820	470	200	330	70	10	60	10
Primary Health Network	10	10	10	10	10	10	10	10	10
Total	13,000	9,110	6,700	3,650	3,510	1,040	390	450	10

Active navigation tab - Antenatal: The highlighted Antenatal tab indicates that the user is currently viewing the Antenatal page. Users can navigate to other pages of the dashboard to explore different vaccination measures.

Adolescents Immunisation Dashboard

Summary and Trends Tab



HPV vaccination summary:
This tile presents the total number of adolescents vaccinated against Human Papillomavirus (HPV) in the selected year, along with the estimated coverage percentage for the relevant age cohort.

Diphtheria–Tetanus–Pertussis vaccination summary:
This tile displays the total number of adolescents who received a diphtheria–tetanus–pertussis (DTP) vaccine and the corresponding coverage rate for the selected year.

Meningococcal ACWY vaccination summary:
This tile shows the total number of adolescents vaccinated against meningococcal ACWY and the associated coverage percentage for the selected year.

Reference year filter:
Use this dropdown to select the reporting year. All vaccination counts, coverage estimates, and charts on the dashboard update to reflect data for the selected year.

Summary Section Header:
Selected antigen summary heading. This heading indicates that the charts below are displaying data for the currently selected antigen group. The content updates dynamically when a different antigen is selected.

Antigen selection:
Use this dropdown to select a specific adolescent vaccine (e.g. HPV, DTP, or Meningococcal ACWY). The charts and analysis below will update to reflect the selected vaccine.

People Vaccinated by Month Chart:
Monthly vaccination activity (adolescents). This chart shows the number of adolescents vaccinated each month for the selected antigen and year. It assists in identifying seasonal patterns and timing of school-based or program delivery..

Monthly volume comparison:
Each bar represents the total number of vaccinations delivered in that month. Higher bars indicate periods of increased vaccination activity.

AUSTRALIAN IMMUNISATION REGISTER (AIR)
Adolescent Immunisation (2025)
Summary

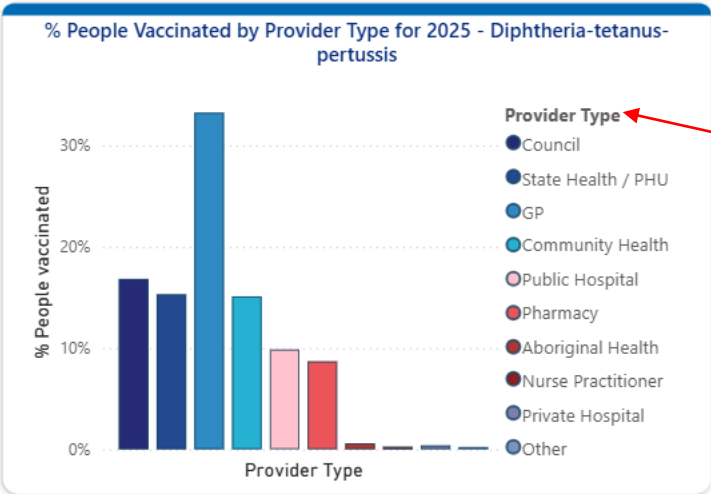
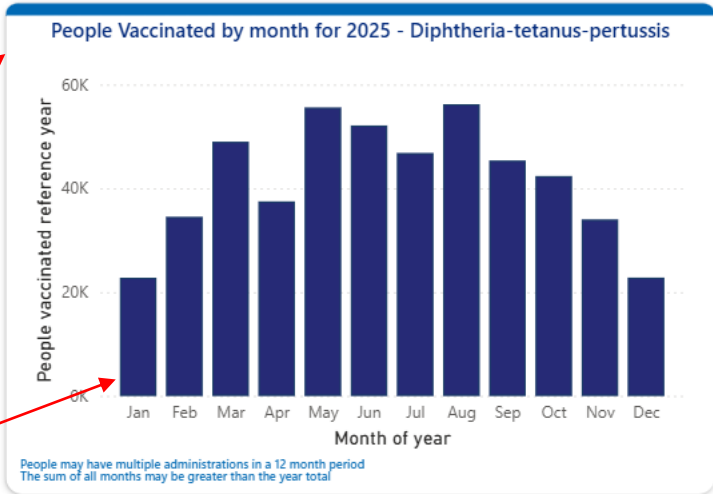
Australian Government
Department of Health, Disability and Ageing

Reference Year: 2025

Antigen	People Vaccinated	Coverage
Human Papillomavirus	296,060	79%
Diphtheria-tetanus-pertussis	486,950	81%
Meningococcal ACWY	271,290	72%

Summary for Diphtheria-tetanus-pertussis

Antigen Group Name
Diphtheria-tetanus-per...



Vaccinations by provider type:
This chart shows the proportion of adolescent vaccinations delivered by each provider type, expressed as a percentage of total vaccinations for the selected antigen.

Provider categories:
Vaccination providers are grouped by service type to support analysis of delivery settings. This enables identification of which sectors contribute most to adolescent vaccination programs.

Summary | People Vaccinated | Doses Administered | Coverage | Trends | Demographics

Data as at: 25/05/2024

Dashboard Navigation Tabs:
Use these tabs to navigate between different views of the adolescent immunisation data. Each tab provides additional detail, including vaccination counts, dose administration, coverage rates, trends, and demographic breakdowns.

Reference Year: 2025

Age in 2025: 12, 13, 14, **15**, 16, 17, 18, 19, 20, 21, 22, 23, 24, 25

Granularity of administration date: **Month**, Quarter

Antigen Group Name: Diphtheria-tetanus-pe...

Age: 15 (selected from tile above)

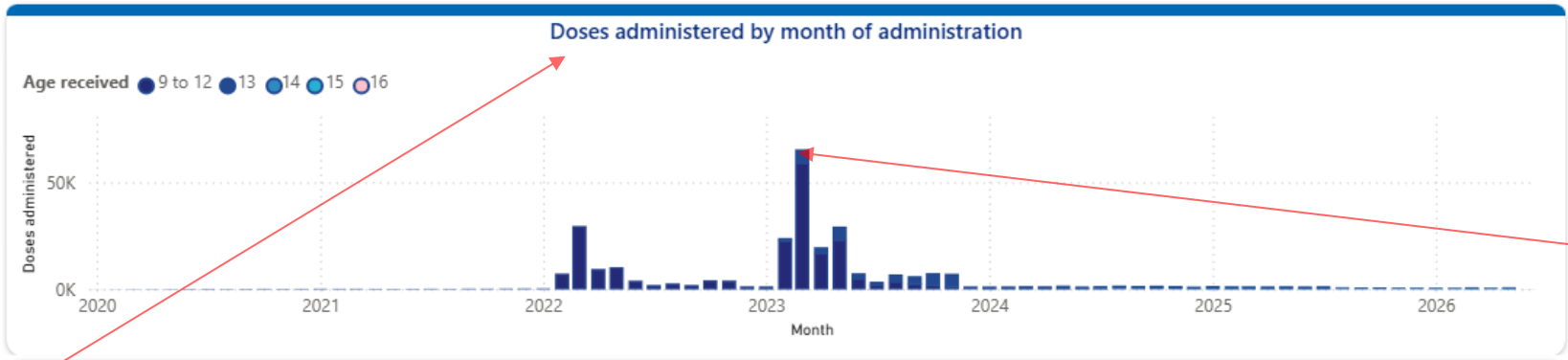
State Name, SA3 Name: All

Provider Type: All

First Nations: All

Gender: All

Reset Filters



Month	Council	State Health / PHU	GP	Community Health	Public Hospital	Pharmacy	Aboriginal Health	Nurse Practitioner	Private Hospital	Ot
December 2025	20	20	450	40	110	40	10	10	10	
November 2025	40	50	440	60	80	30	20	10	10	
October 2025	40	60	560	50	100	30	20	10	10	
September 2025	30	40	590	70	80	30	30	10	10	
August 2025	60	50	680	60	90	30	30	10	10	
July 2025	40	20	1,110	80	90	50	20	10	10	
-----	--	--	---	---	--	--	--	--	--	--
Total	88,070	74,300	51,250	60,240	7,190	960	3,230	410	100	

Year selector (checkboxes for 2023, 2024, 2025, 2026): This control allows users to select one or more years to display simultaneously. When multiple years are selected, trends are overlaid on the chart to support year-on-year comparison of vaccination activity.

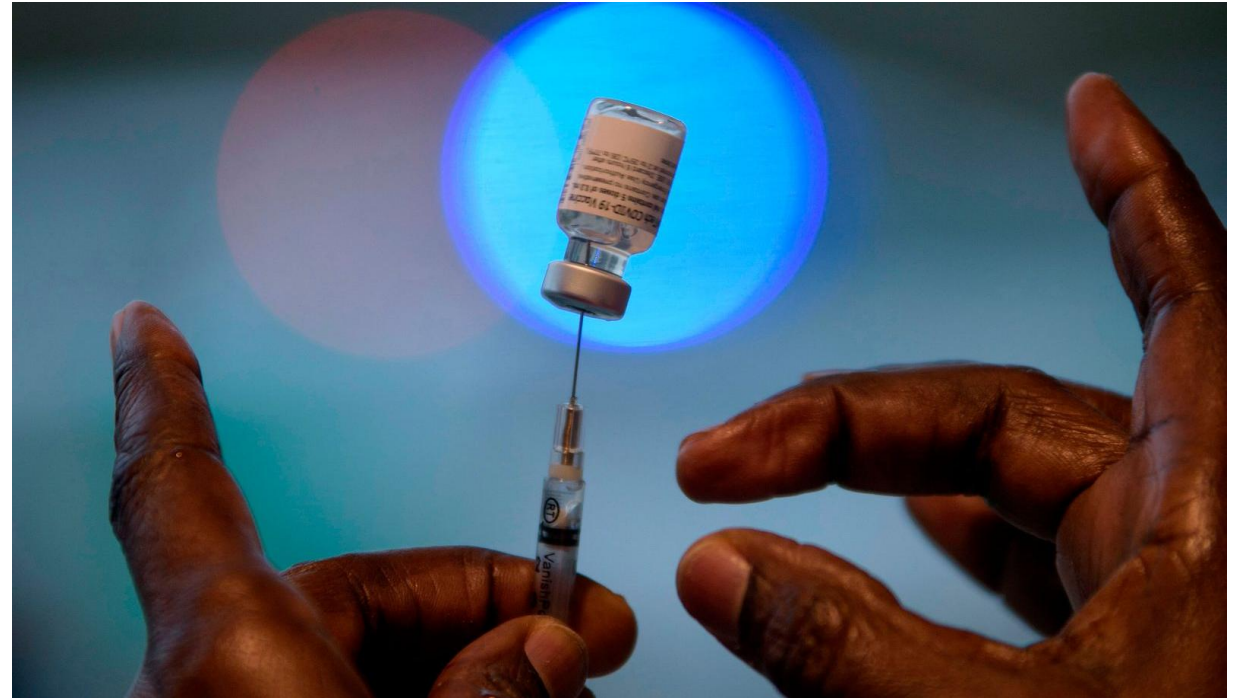
Monthly Vaccination Trend: This chart shows the number of people vaccinated by month. Each line represents a different year, allowing users to compare the timing and magnitude of vaccination activity across years.

Interactive tooltip - weekly detail: Detailed Weekly Values (Tooltip) Hovering over the chart displays a tooltip with the selected week and the number of people vaccinated for each selected year. This allows precise comparison of vaccination activity at specific points in time.

Trends tab (bottom navigation bar): The highlighted Trends tab indicates that the user is currently viewing the Trends page. Users can navigate to other pages, such as Summary, People Vaccinated, Doses Administered, or Coverage, to explore different views of the data.

Older Australian Immunisation Dashboard

First Nations Tab



Antigen
Pneumococcal

Year
2025

Month
All

State Name, SA3 Name
All

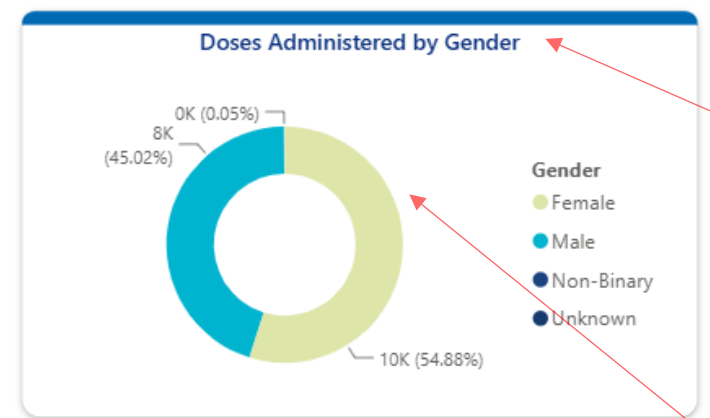
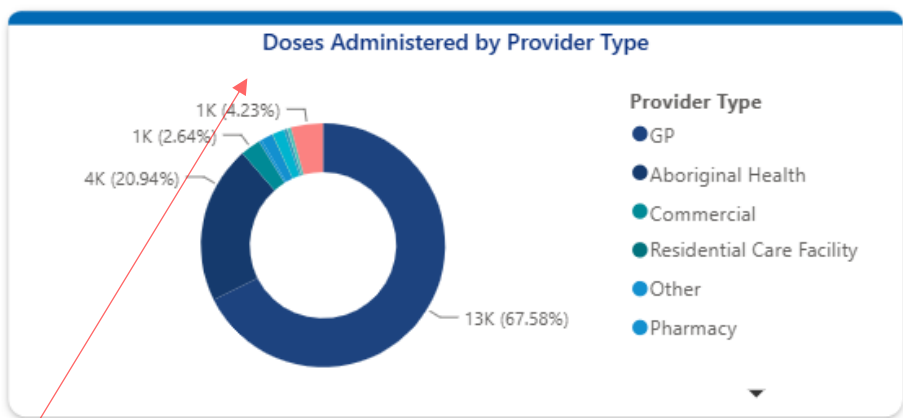
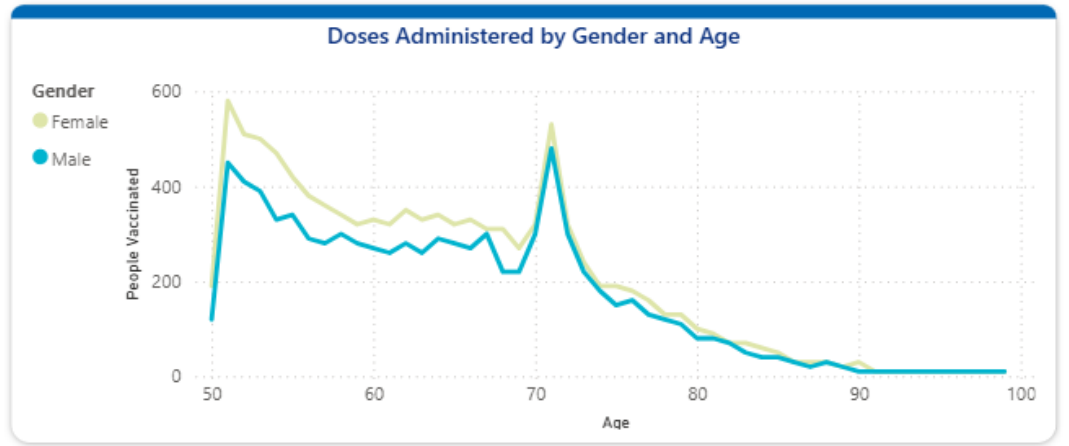
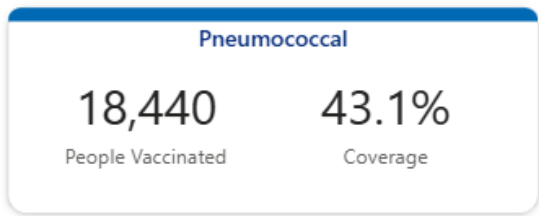
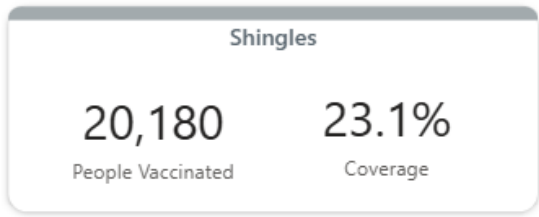
Provider Type
All

Age Group
All

First Nations
Yes

Gender
All

Reset Filters



Geography Filter (State Name, SA3 Name):
Select a state, territory, or SA3 region to view vaccination data for a specific geographic area. All charts will update accordingly..

People characteristics filters – First Nations:
This filter allows users to focus specifically on vaccination data for First Nations people. Selecting "Yes" will restrict the dashboard to show results for individuals identified as First Nations in the Australian Immunisation Register (AIR).

Doses Administered by Gender and Age :
This chart displays the number of doses administered across age groups, split by gender.

Doses administered by gender:
This chart shows the proportion of vaccine doses administered by gender, providing an overview of distribution across the population.

Doses administered by provider type:
This chart shows the distribution of vaccine doses delivered by different provider types. Values are expressed as proportions of total doses administered.

Active navigation tab – First Nations:
The highlighted tab indicates the First Nations page. Users can navigate to other pages such as Summary, People Vaccinated, Coverage, or Trends to explore different views of the data.

Childhood Immunisation Dashboard

Coverage Tab





Quarter end date

September 2025

State, Geography

All

Age Group

1 year olds

Antigen group

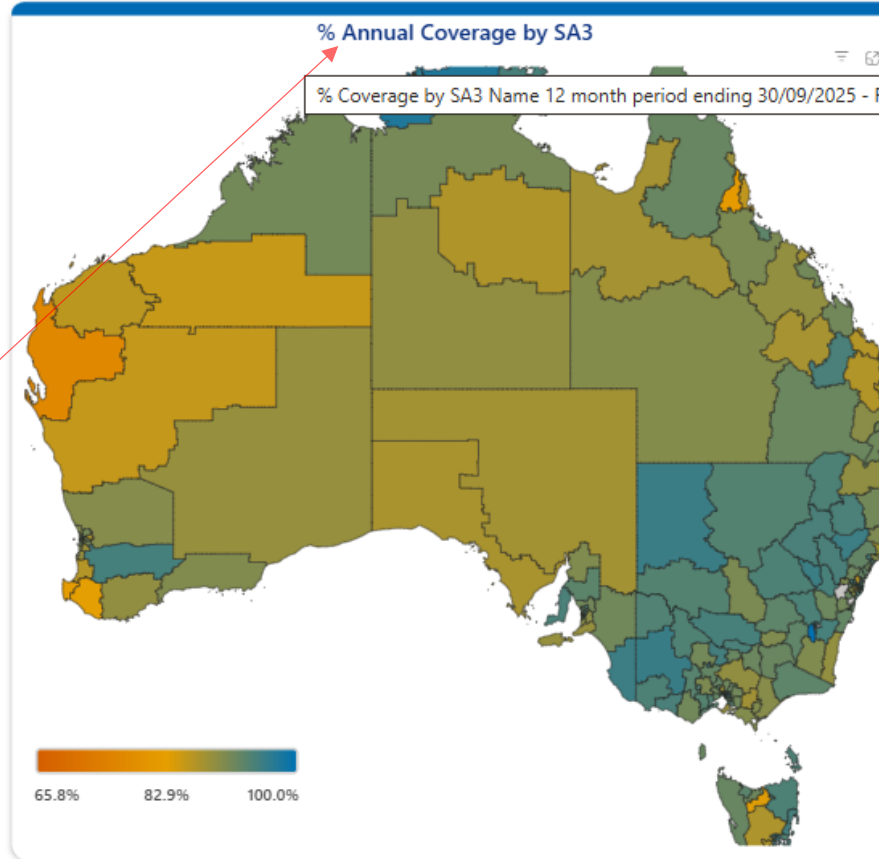
Fully vaccinated

Quarter End Date Filter: Select the reporting period for the analysis. All coverage estimates and visualisations update based on the selected quarter end date.

Geographic Coverage by SA3 Map: This map displays vaccination coverage by Statistical Area Level 3 (SA3). It provides a geographic view of coverage variation across Australia for the selected age group, antigen group, and reporting period.

Coverage scale (legend): The colour scale indicates the level of vaccination coverage. Lower coverage areas are shown in warmer colours, while higher coverage areas are shown in cooler colours, allowing quick identification of geographic variation.

Reset Filters



State	Rolling Annual Coverage
New South Wales	91.65%
Victoria	92.49%
Queensland	90.18%
South Australia	92.00%
Western Australia	90.33%
Tasmania	93.16%
Northern Territory	92.63%
Australian Capital Territory	95.00%
Total	91.54%

State-level and territory coverage table: This table displays rolling annual vaccination coverage by state and territory. It enables comparison of coverage rates across jurisdictions for the selected cohort and antigen group.

Geography	Rolling Annual Coverage
Adelaide City	87.83%
Adelaide Hills	89.72%
Albany	89.16%
Albury	90.51%
Alice Springs	89.22%
Armadale	91.21%
Armidale	91.47%
Auburn	89.77%
Augusta - Margaret River - Busselton	82.19%
Bald Hills - Everton Park	86.55%

Geography Coverage Table: Detailed geographic coverage. This table provides coverage estimates at a more granular geographic level (e.g. SA3 regions). It supports identification of local areas with lower or higher vaccination coverage.

Active navigation tab – Coverage: Use these tabs to move between different views of the childhood immunisation data, including vaccination counts, dose administration, coverage, geographic analysis, and trends.

Adolescent Immunisation Dashboard

Demographics Tab



Reference Year
 2025

Antigen Group Name
 Diphtheria-tetanus-pe...

Age in reference year
 All

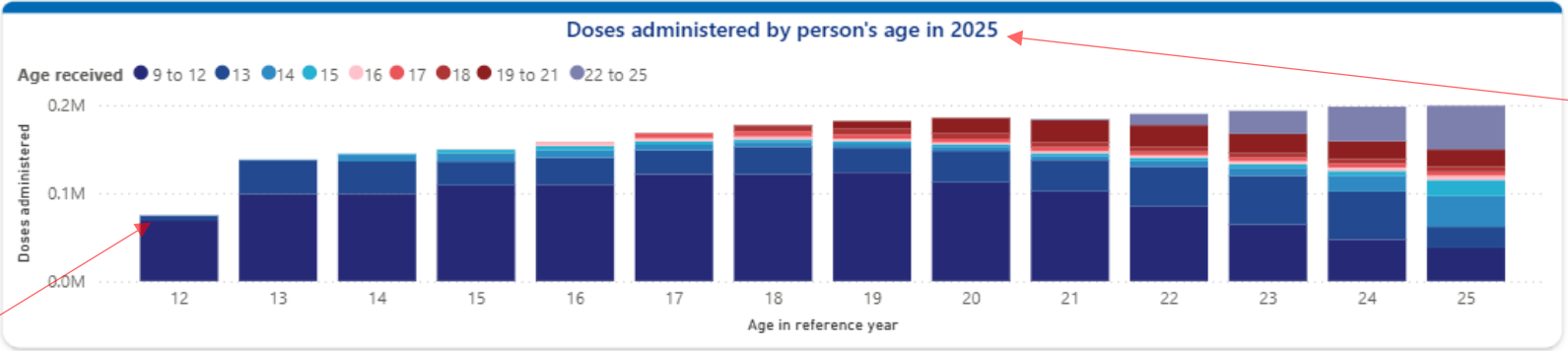
State Name, SA3 Name
 All

Provider
 Not applicable to this view

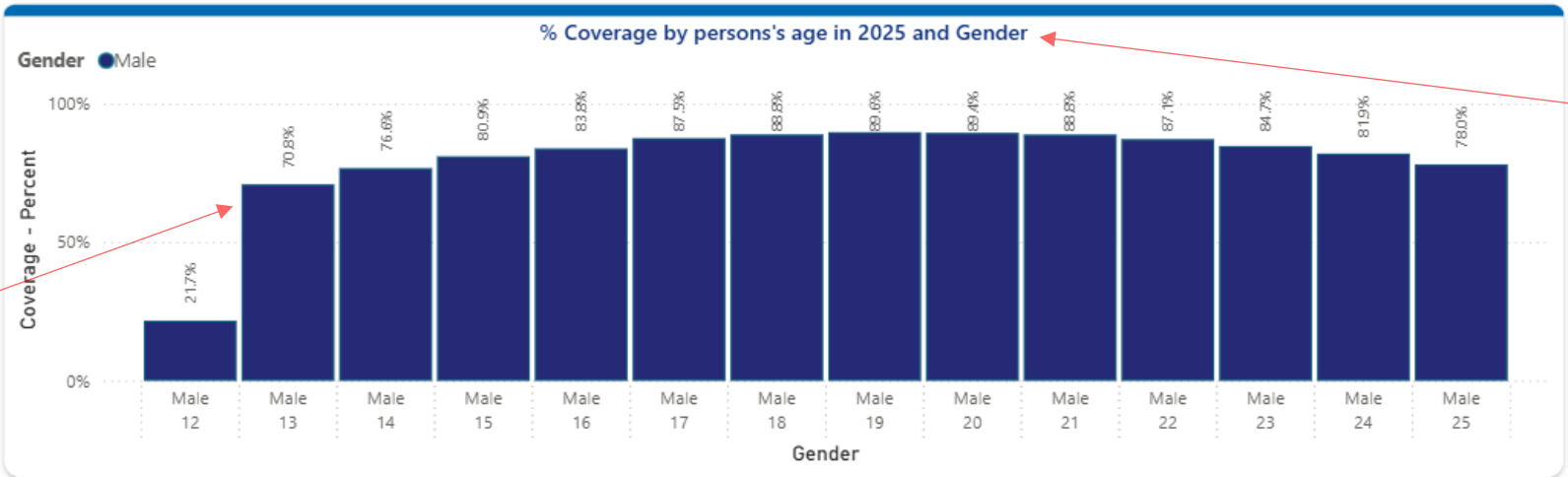
First Nations
 All

Gender
 Male

 Reset Filters



Doses Administered by Age Chart: This chart shows the number of vaccine doses administered by age in the selected year. It provides an overview of how vaccination activity is distributed across adolescent age groups.



Coverage by Age and Gender Chart: This chart displays vaccination coverage percentages by age for the selected gender, enabling analysis of how coverage varies across adolescent age groups.

Age Breakdown: Age distribution within doses. Each bar represents a specific age, and the stacked segments show the distribution of doses received at different ages, allowing comparison across cohorts.

Coverage by Age and Gender Chart: This chart displays vaccination coverage percentages by age for the selected gender, enabling analysis of how coverage varies across adolescent age groups.

Active navigation tab – Demographics: Use these tabs to move between different views of the childhood immunisation data, including vaccination counts, dose administration, coverage, geographic analysis, and trends.