



# Australian Government

---

## Department of Health, Disability and Ageing

Principle 2 – Cultivate a Home:  
National Aged Care Design Principles and Guidelines



Australian Government

Department of Health, Disability and Ageing

# Principle 2 - Cultivate a Home: National Aged Care Design Principles and Guidelines

Webinar Series: Home Matters - Rethinking Aged Care Design



# Acknowledgment of Country

The Department of Health, Disability and Ageing and Dementia Training Australia would like to show our respect and acknowledge the traditional custodians of these lands. We extend this respect to Elders past and present, and to all Aboriginal and Torres Strait Islander people here today.



Artist: Brittney Angus

# Housekeeping

---



Q&A



Participant  
Audio/Video



Copy of Slides

# Overview of Today's Session

---

- Creating a familiar environment supporting privacy, control and belonging
- Guidelines on household size, kitchens and furniture
- Setting up an active and functional kitchen



# Host

---



**Nick Seemann**  
Environments Specialist

# Speakers

---



**Angela Raguz**  
Head of Aged Care  
The Salvation Army Aged Care



**Natasha Chadwick**  
Founder & CEO  
NewDirection Care

# National Aged Care Design Principles and Guidelines

and how they can help improve residents' lives





### **Principle 1 - Enable the Person**

To support people living in a place that maintains their health, wellbeing and sense of identity.

### **Principle 2 - Cultivate a Home**

To create a familiar environment in which people have privacy, control and feel they belong.

### **Principle 3 - Access the Outdoors**

To support people seeing, accessing and spending time outdoors in contact with nature.

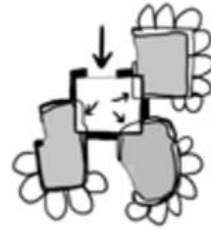
### **Principle 4 - Connect with Community**

To encourage people to connect with family, friends and community, continuing to participate in meaningful activities.

# Principle 2 Guidelines



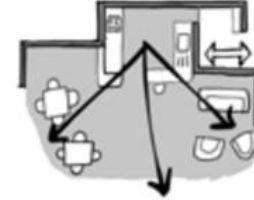
2.1 Personalised Home



2.2 Small Households



2.3 Private Entries



2.4 Domestic Kitchens



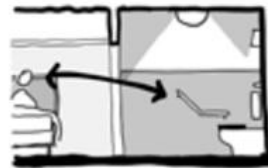
2.5 Room Clusters



2.6 Enabling Corridors



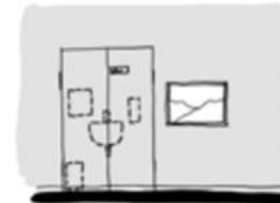
2.7 Private Bedrooms



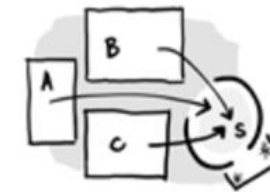
2.8 Ensuite Bathrooms



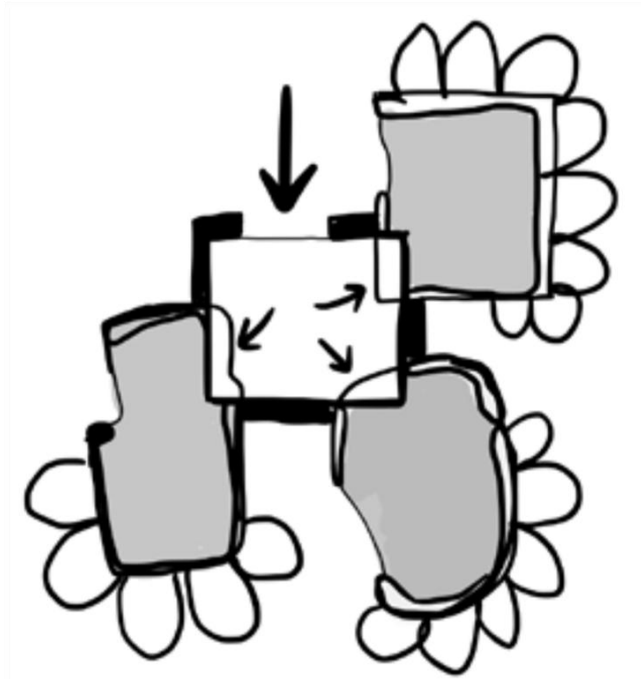
2.9 Appropriate Furniture



2.10 Clinical Support



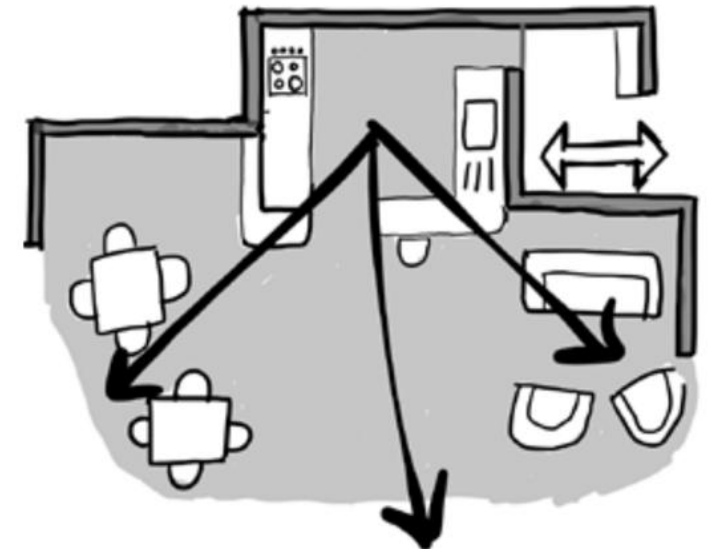
2.11 Private Staffroom



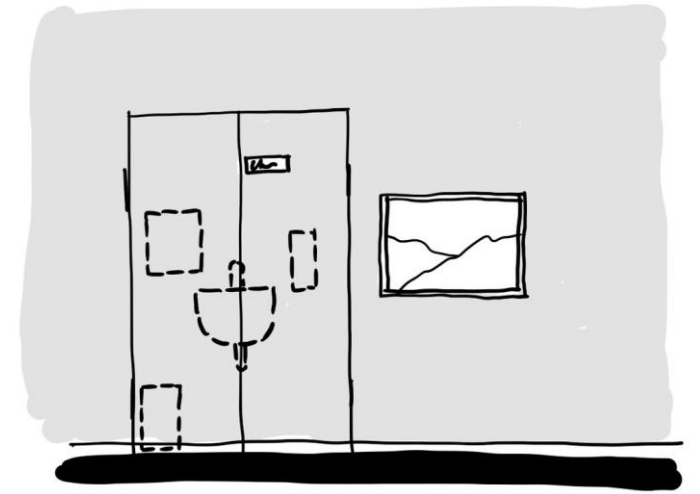
**Guideline 2.2 – Small Households**



**Guideline 2.3 – Private Entries**



**Guideline 2.4 – Domestic Kitchens**



**Guideline 2.10 – Clinical Support**

# Care Home Assessment Tool (CHAT)

---



- **What does it do?**
  - Guides you through the 4 Design Principles
  - Assesses how well your care home meets each Guideline
  - Identifies strengths and areas for improvement
  - Provides a holistic site report (by unit/wing/household)

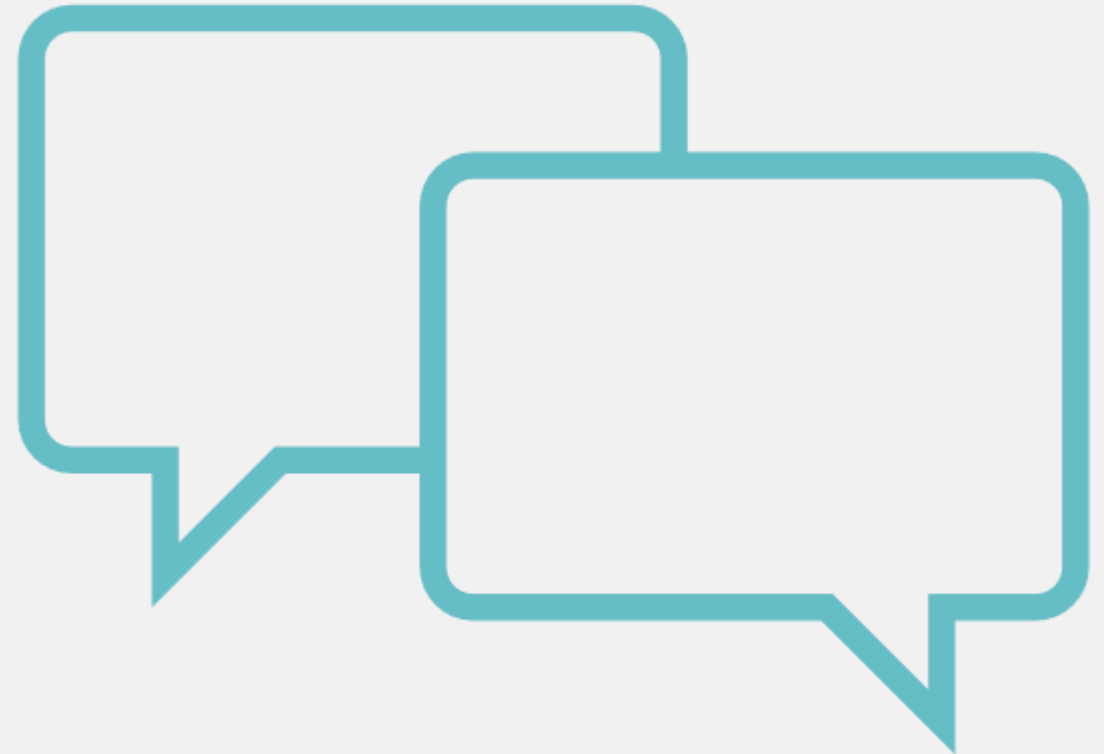
<https://dta.com.au/care-home-assessment-tool-chat/>

# Environments Hub



# Q&A Discussion

---





[health.gov.au/aged-care-reforms](https://health.gov.au/aged-care-reforms)



Phone **1800 200 422**  
(My Aged Care's free call phone line)