

medicare

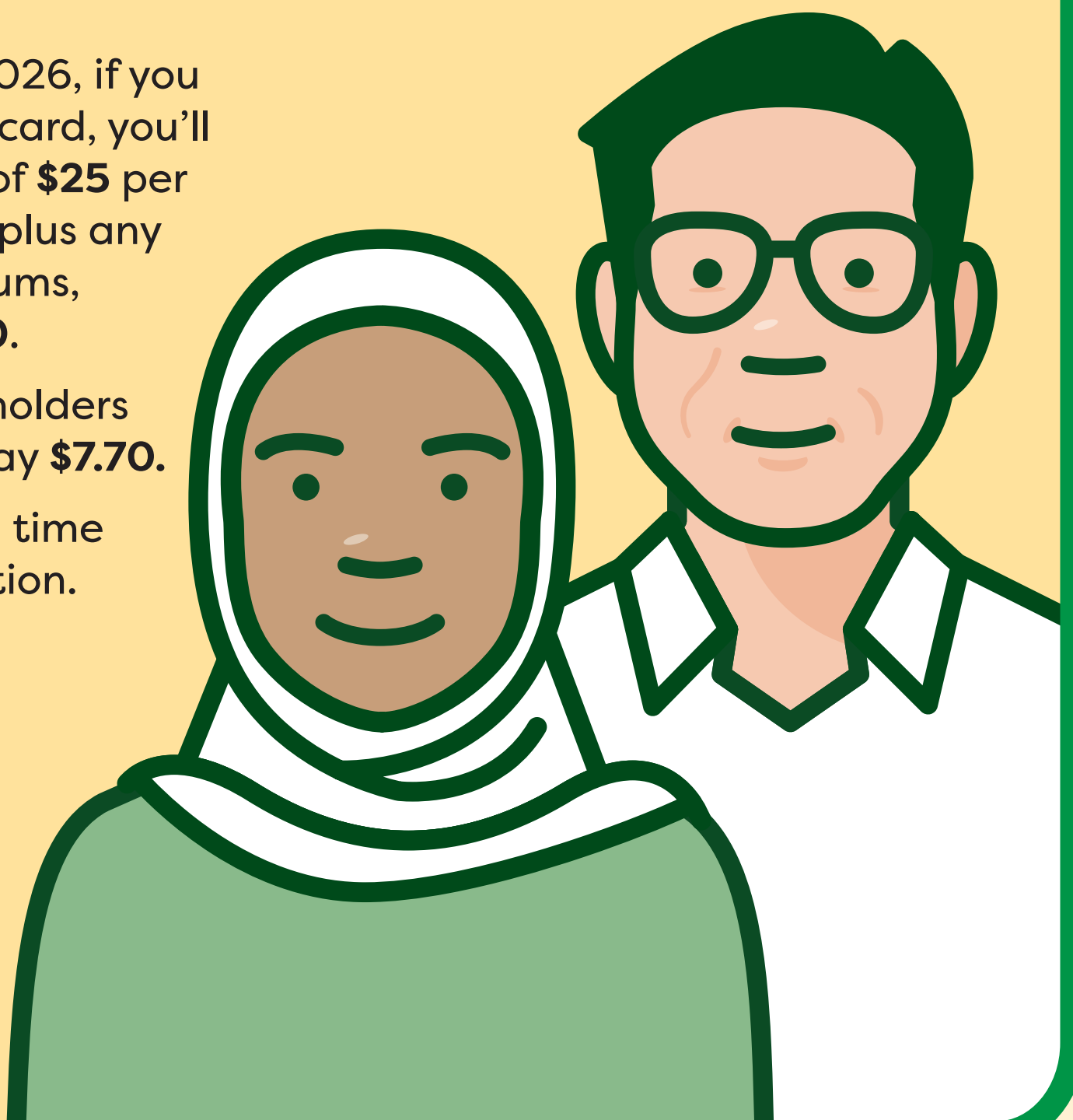
# Cheaper medicines

Even cheaper from 1 January 2026

From 1 January 2026, if you have a Medicare card, you'll pay a maximum of **\$25** per PBS prescription, plus any applicable premiums, down from **\$31.60**.

Concession card holders will continue to pay **\$7.70**.

Save money each time you fill a prescription.



For more information visit:

**health.gov.au/cheapermedicines**



Scan this QR code  
for more information



Australian Government  
Department of Health,  
Disability and Ageing



The Pharmaceutical Benefits Scheme