



Australian Government

Department of Health, Disability and Ageing

NDIS Evidence Advisory Committee

Webpage





Australian Government

**Department of Health,
Disability and Ageing**

The Australian Government Department of Health Disability and Ageing wrote this.

We say **DHDA** for short.

When you see the word **we** it means DHDA.



We wrote this in an easy to read way.

We use pictures to explain some ideas.

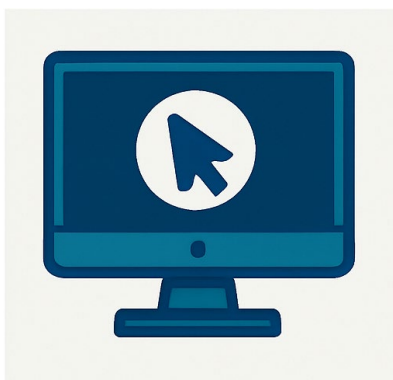
Bold

We have some words in **bold**.

Not bold

This means the letters are thicker and darker.

These are important words.



This is an Easy Read summary of our website.

www.health.gov.au/committees-and-groups/ndis-evidence-advisory-committee



You can ask for help to read this document.

You can ask

- A friend
- Family members
- A support person.



We recognise Aboriginal and Torres Strait Islander people as the **Traditional Owners** of the land we live on.



They were the **first people** to live on and use the

- Land
- Waters.

Contents

NDIS Evidence Advisory Committee	5
Why do we need EAC	6
What will EAC do	9
Who is on EAC	10
About the subcommittees	14
How people with disability can take part	19

NDIS Evidence Advisory Committee



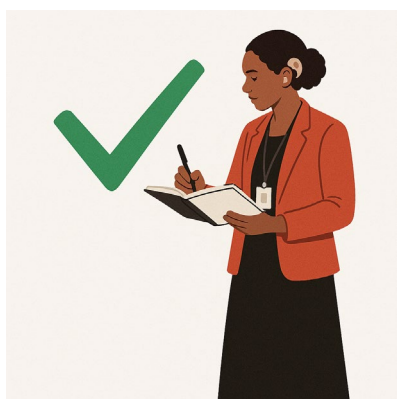
The Australian Government set up the NDIS Evidence **Advisory Committee**.



An advisory committee is a group of people who

- Go to meetings
- Help make decisions
- Come from different areas.

We call it **EAC** for short.



EAC is made up of **experts**.

Experts are people who know a lot about something.

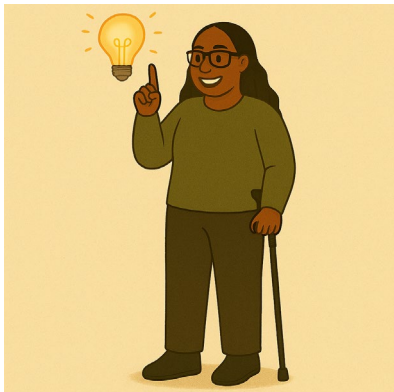
Why do we need EAC



The government did a **review** of the NDIS.

A review is when you **check** what

- Works
- Needs to **change**.



They had some **recommendations** about the NDIS.

Recommendations are ideas to do things better.



1 recommendation was for the government to set up the EAC.



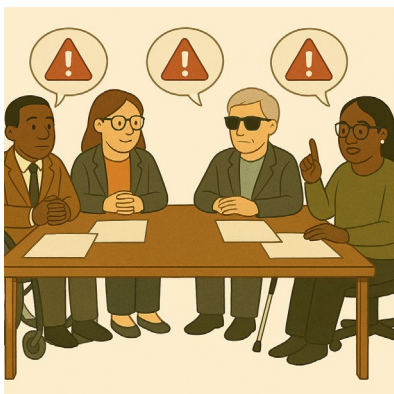
EAC will give the government advice about NDIS supports.

They will say if the supports

- Will work



- Are good



- Are safe



- Cost a good amount of money.



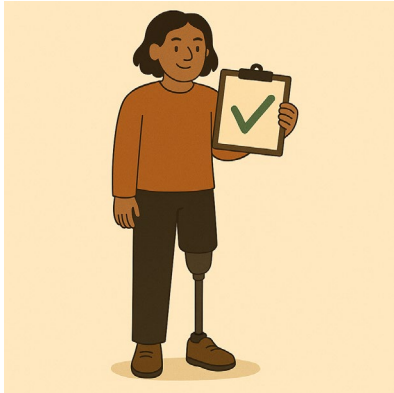
This will help make

- The NDIS better



- Supports better for people with disability.

What will EAC do



EAC will look at the **evidence** for disability supports.

Evidence is proof that something is true.

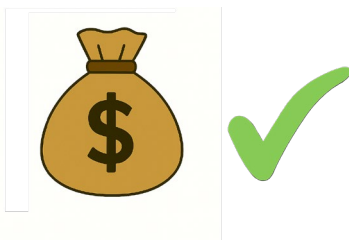


EAC will tell the government if they think the supports are

- Safe



- Work well



- Are a good use of money.

Who is on EAC



EAC is made up of different people.

They might be

- People with disability



- Carers



- People who work in **allied health**

Allied health support people with their health.

They can be people like **occupational therapists**.

We call them **OT** for short.



- Nurses



- Doctors



- People who do **research**

Research means

- Finding out what people think about things
- Using the information to **help others**.



- People who work in education



- People who work with the **law**

Laws are **rules** for how we live.



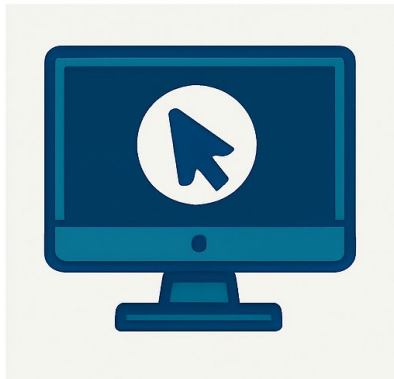
- People who do **social work**

Social work is working with people and communities.

They look for ways to support good changes for people.



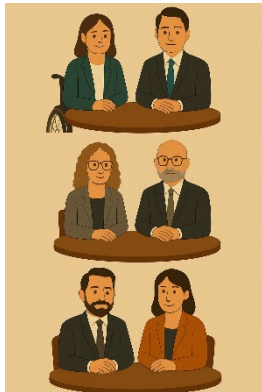
- People who have businesses.



You can look at all the people on EAC on our website.

www.health.gov.au/committees-and-groups/ndis-evidence-advisory-committee

About the subcommittees



There are 3 sub committees.

They all have 2 **Co Chairs**.

The Co Chairs are the leaders of the group.



1. **Assistive technology** and **capital** subcommittee



Assistive technology can be things to help you

- Speak
- Move
- See
- Hear.

This can be changes to your home to help you be safer.



Capital means something you buy with NDIS money that

- Costs more
- You only buy 1 time.

It needs to help improve your life.



The Co Chairs are

- Dr Lisa Chaffey



- Professor Alistair McEwan.



2. **Capacity building and therapies** subcommittee



Capacity building is teaching you new skills to help you do more for yourself.



Therapy is something to help you

- Feel better
- Grow stronger.

There are lots of different types of therapy.



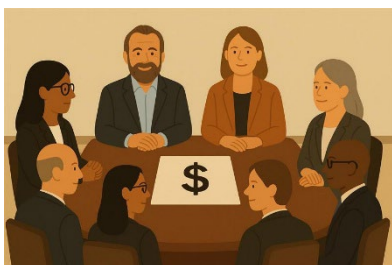
The Co Chairs are

- Dr Walid Jammal

Walid likes to be called Wally



- Professor Yasmine Probst.



3. **Economics** subcommittee

Economics is about how money and services are used.



The Co Chairs are

- Professor Liliana Bulfone



- Professor Rob Carter.



We will have a list of all the people on the subcommittees soon.

How people with disability can take part



EAC will ask what the community thinks about the supports they are looking at.

EAC want to hear what people with disability think.

This is called **consultation**.



There will be a chance for the community to share their ideas about

- Who uses the supports



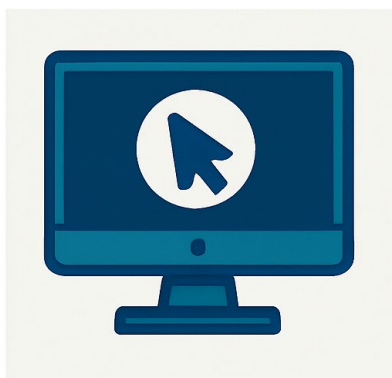
- How they use the supports



- Why they use the supports



- Other supports that might do the same thing.



Consultation will be open soon.

You can go to the website to find out more about sharing your ideas.

Images in this Easy Read must **not** be used or copied without permission