

Western NSW

PHN Fact sheet 2024

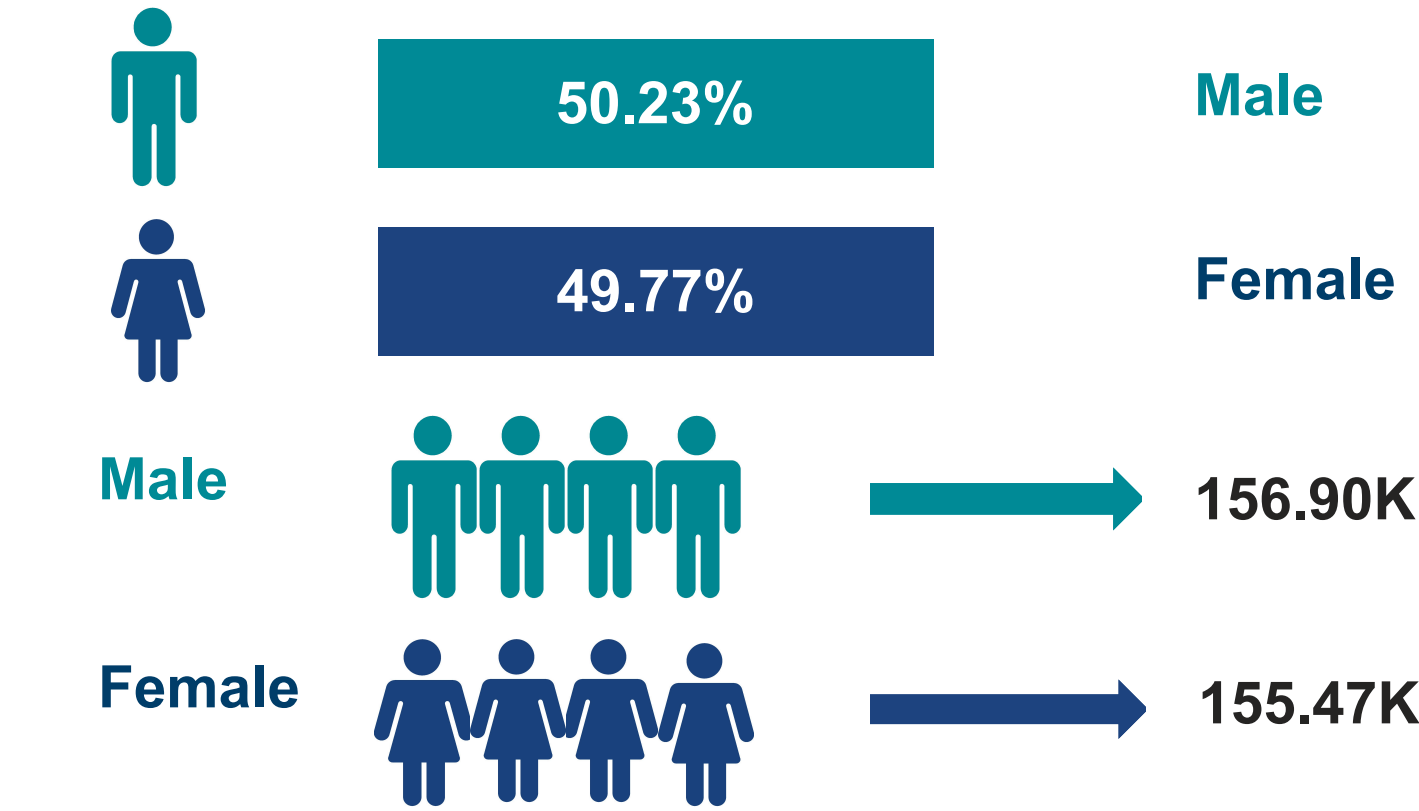
Snapshot^(b)

Total Population (ERP 2022):	312.37K
First Nations People (ERP 2022):	45.15K
Total Population Growth (2016 - 2022):	1.59%
Population Aged 65+ (ERP 2022):	62.41K
Population Growth Aged 65+ (2016 - 2022):	12.23%
Area Square kilometers:	433.37K

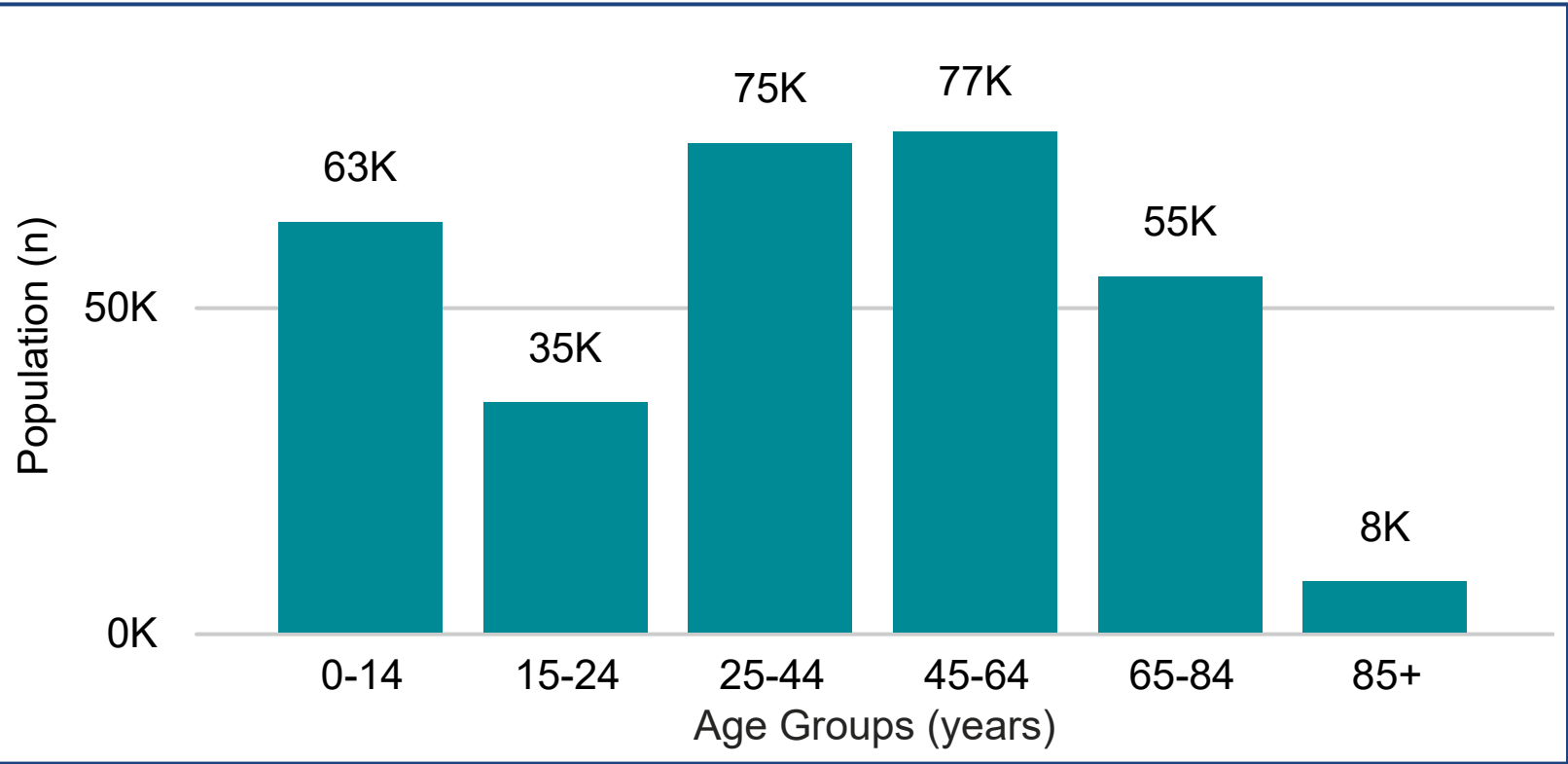
Key Information

Need for Assistance ^(a)		Unemployment Rate ^(b)	
6.29%		2.58%	
English Proficiency ^(a)			
Not well		0.38%	
Not at all		0.14%	

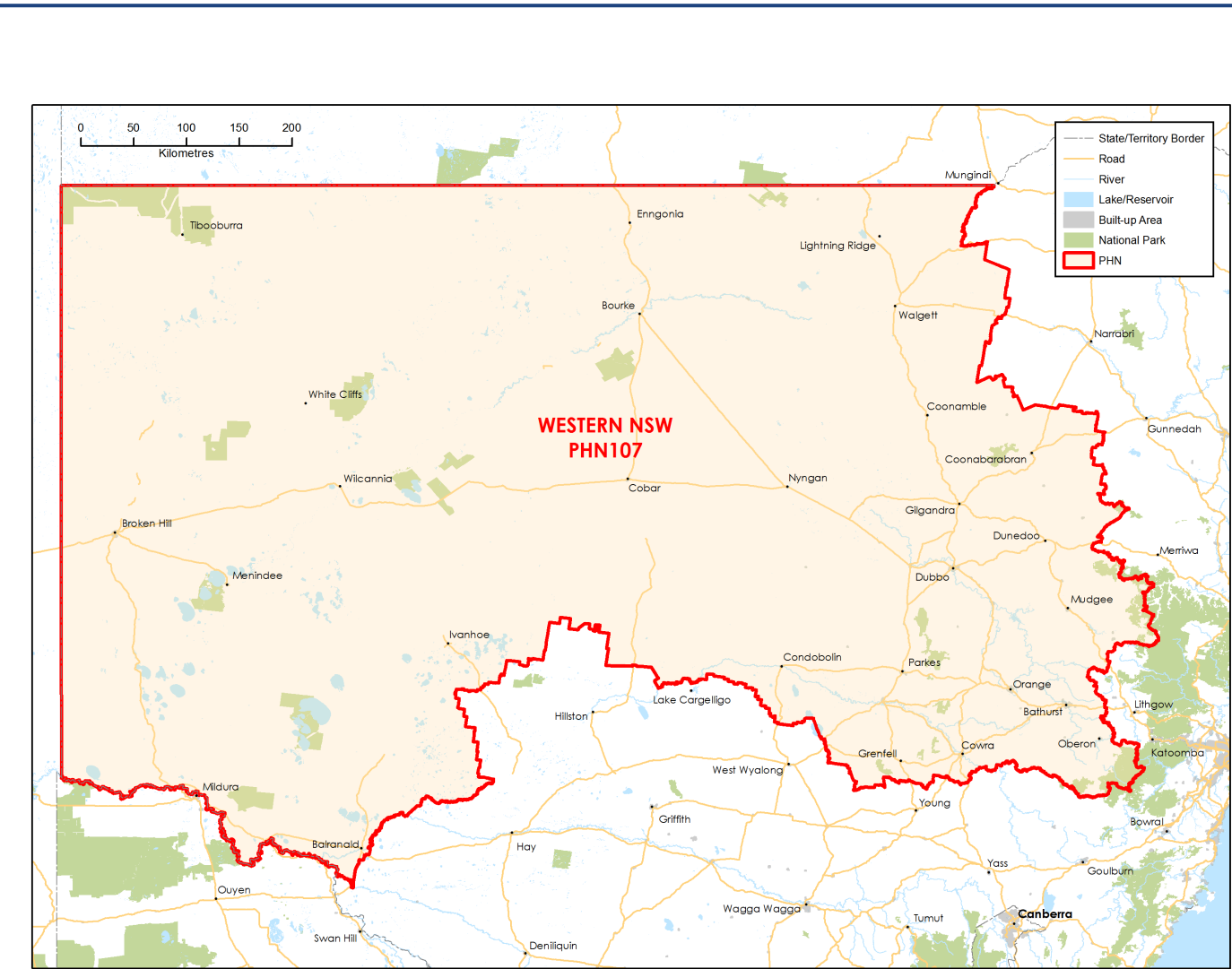
Demographics^(b) (ERP 2022)



Age^(b) (ERP 2022)



Map (2022)



Source: a - Australian Bureau of Statistics - Census of Population and Housing 2021 | b - PHIDU Social Health Atlas of Australia Data by Primary Health Network Dec 2023
ERP: Estimated Resident Population | **Need for Assistance:** Core Activity need for Assistance (ASSNP) | **English Proficiency:** Proficiency in spoken English (ENGLP) | Australian Bureau of Statistics (abs.gov.au)
Data has been obtained from a range of publicly available sources, and DoHAC does not take responsibility for data quality. **Last Updated:** March 2025