

Shaping the next National Disability Strategy

A report about what the community told us



How to use this report



The Social Deck wrote this report for the Australian Government. When you see the word 'we', it means the Australian Government.



We have written this report in an easy to read way.

We use pictures to explain some ideas.



We have written some words in **bold**.

We explain what these words mean.

There is a list of these words on page 27.



This Easy Read report is a summary of another report.



You can find the other report on our website at www.engage.dss.gov.au/a-new-national-disability-strategy-for-beyond-2020



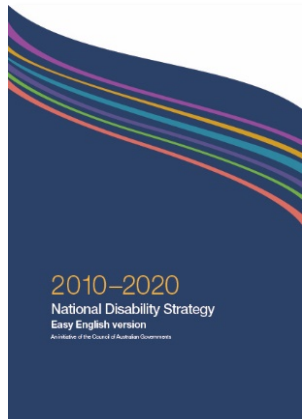
You can ask for help to read this report.

A friend, family member or support person may be able to help you.

What's in this report?

What is the National Disability Strategy?	4
A new national disability strategy	7
Talking to the community about the strategy	9
What the community told us	12
Our vision for the new strategy	22
What happens next?	25
Word list	27
Contact us	30

What is the National Disability Strategy?



The *National Disability Strategy 2010-2020* is a plan to improve the lives of people with disability.

In this document we call it 'the Strategy'.

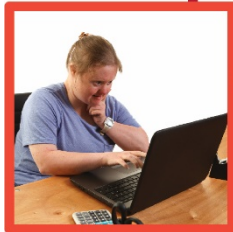
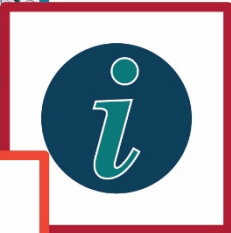


The Strategy talks about what we can do to make Australia more:

- **inclusive**
- **accessible.**



If something is inclusive, everyone can take part.



If something is accessible, everyone can use it. This might be:

- a place or a building
- transport
- a service
- information
- a website.



The Strategy explains how people with disability should be:

- treated the same as everyone else
- included in our community.



The Strategy is based on ideas that are in the *United Nations Convention on the Rights of Persons with Disabilities* (UN Convention).



The UN Convention is an international agreement. It applies all around the world.



The UN Convention sets out the rights of people with disability. It explains how people with disability should be treated fairly.

A new national disability strategy



In 2020, the Strategy will end.



Governments across Australia are working together to create a new strategy.



We want to know what people think should be in the new strategy.

We asked people what they thought:



- in a survey



- at community workshops



- by talking to them in person



- by talking to them online.



This report is about what people in the community told us.

Talking to the community about the strategy



It's important to talk to the community about any plans we make for the new strategy.

We talked to:



- people with disability



- families



- carers



- **advocates** – people who speak up for people with disability



- service providers



- **academics** – people who teach in a college or university.



We heard from people in the community in different ways.

2,649



2,649 people answered the questions in the survey.

599



599 people took part in community workshops.

474



We talked to 474 Aboriginal and Torres Strait Islander peoples.

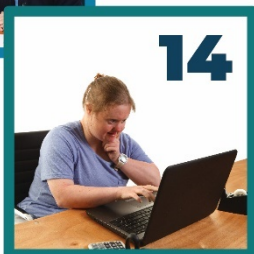
15



We talked 1 on 1 with:

- 15 organisations in person
- 14 people online.

14



What the community told us



People gave us lots of important ideas to think about for the new strategy.



They said people with disability need to be included every time decisions are made about them.

This includes:



- what is in the new strategy



- how the new strategy works.



They said it's important that governments do what the new strategy says.



People said there should be a group that checks on how governments are going with the new strategy.



They also said there should be a report every year about how the new strategy is going.

What has improved for people with disability?



People in the community told us that some things have improved over the last 10 years.

People said:



- they can get services and supports that meet their needs better



- how the community thinks and feels about people with disability has improved



- more people with disability are shown in the media



- there are more people with disability in important jobs



- the community is more accessible.

What challenges do people with disability still face?



People with disability still face barriers and challenges in our community.



Over 80% of people who took part in the survey said that people without disability don't know how to act towards people with disability.



31% of people with disability who took part in the survey said that **discrimination** has gotten worse in the last 5 years.



Discrimination is when you are treated unfairly because of your disability.



34% of people with disability who took part in the survey said that experiences of **violence, abuse, neglect** and **exploitation** has gotten worse over the past 5 years.



Violence is when someone is hurting you physically.



Abuse is when someone is treating you badly.



Neglect is when someone is not helping you the way they are supposed to help you.



Exploitation is when someone is taking advantage of you.



72% of people who took part in the survey said it's hard to find information about disability services.



60% of people who took part in the survey said it's hard to find information about the rights of people with disability.



We also found out that about 50% of people with disability don't take part in community activities very often.



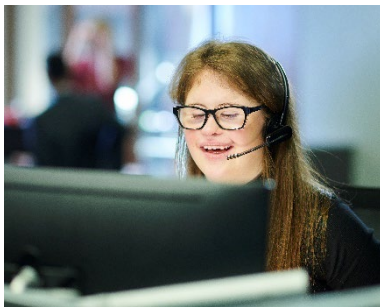
Community activities can include:

- shopping
- going to see a movie
- going to a sporting event, like the football.



The most common reason people with disability don't take part is because they don't have enough money.

People with disability said the biggest challenges they face are:



- finding and keeping a job



- having enough money.

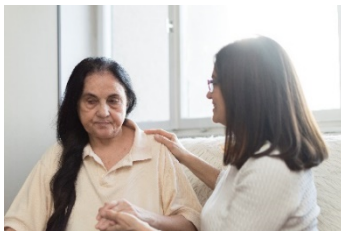


People with disability also told us about other challenges that stop them from living the life they want.

The challenges include:



- people not supporting their rights



- not being able to do things for themselves



- having poor health and wellbeing



- not including people with disability when changes are made that affect them



- not having people understand that different groups of people with disability can have different challenges.

Groups in our community



There are many groups in our community who face extra barriers and challenges.

These different groups include:



- people who live in the country and a long way from towns and cities



- Aboriginal and Torres Strait Islander peoples



- children and young people



- people who are over 65 years old



- women



- people who are lesbian, gay, bisexual, transgender, intersex and queer (LGBTIQ+)



- people who don't have much money



- people from different **cultures**.



Your culture is your race, the language you speak or the way you live your life because of where you or your family were born.

Our vision for the new strategy



Our **vision** is what we want the new strategy to help make better in the future.



People told us what their vision for the new strategy is.

They said they would like to see:



- Australia high on lists of countries that give people with disability good support



- respect for all human rights



- new laws to support the rights of people with disability



- more jobs for people with disability



- more accessible housing for people with disability



- communities that are accessible for everyone



- better lives for all people with disability



- new **policies** created with people with disability.



A policy is a government plan for the future.

What happens next?



We have listened to everything that people told us is important to them.



Now we will start creating the new strategy.

While we are creating the new strategy, we will:



- give people the chance to tell us what they think about the things we want to include in the strategy



- think more about the right of people with disability to work and how to include this in the strategy



- show how governments can support people with disability who don't take part in the National Disability Insurance Scheme (NDIS)



- look at how governments can support people with disability to use new technology



- show governments how they can make communities more accessible



- look at how different groups of people with disability are supported and how governments can help them



- think about how governments will show that they are doing what the strategy says.

Word list



Abuse

When someone is treating you badly.



Academic

A person who teaches in a college or university.



Accessible

If something is accessible, everyone can use it.

This might be:

- a place or a building
- transport
- a service
- information
- a website.



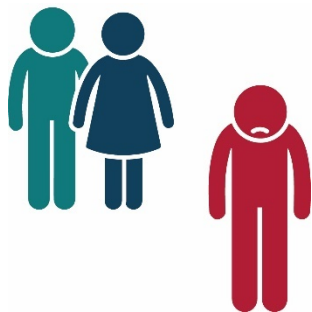
Advocate

A person who supports you. They help you have your say. They can also give you information and advice.



Culture

Your race, the language you speak or the way you live your life because of where you or your family were born.



Discrimination

When you are treated unfairly because of your disability.



Exploitation

When someone is taking advantage of you.



Inclusive

If something is inclusive, everyone can take part.



Neglect

When someone is not helping you the way they are supposed to help you.



Policies

Government plans for the future.



Violence

When someone is hurting you physically.



Vision

Our vision is what we want the new strategy to help make better in the future.

Contact us



1800 334 505



You can also call the National Relay Service.

TTY users: **1800 555 677**

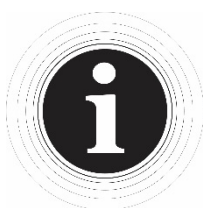
Phone **13 36 77**



disabilityreform@dss.gov.au



www.engage.dss.gov.au



The Information Access Group created this Easy Read fact sheet using stock photography and custom images.

The images may not be reused without permission.

For any enquiries about the images, please visit

www.informationaccessgroup.com. Quote job number 3124-D.