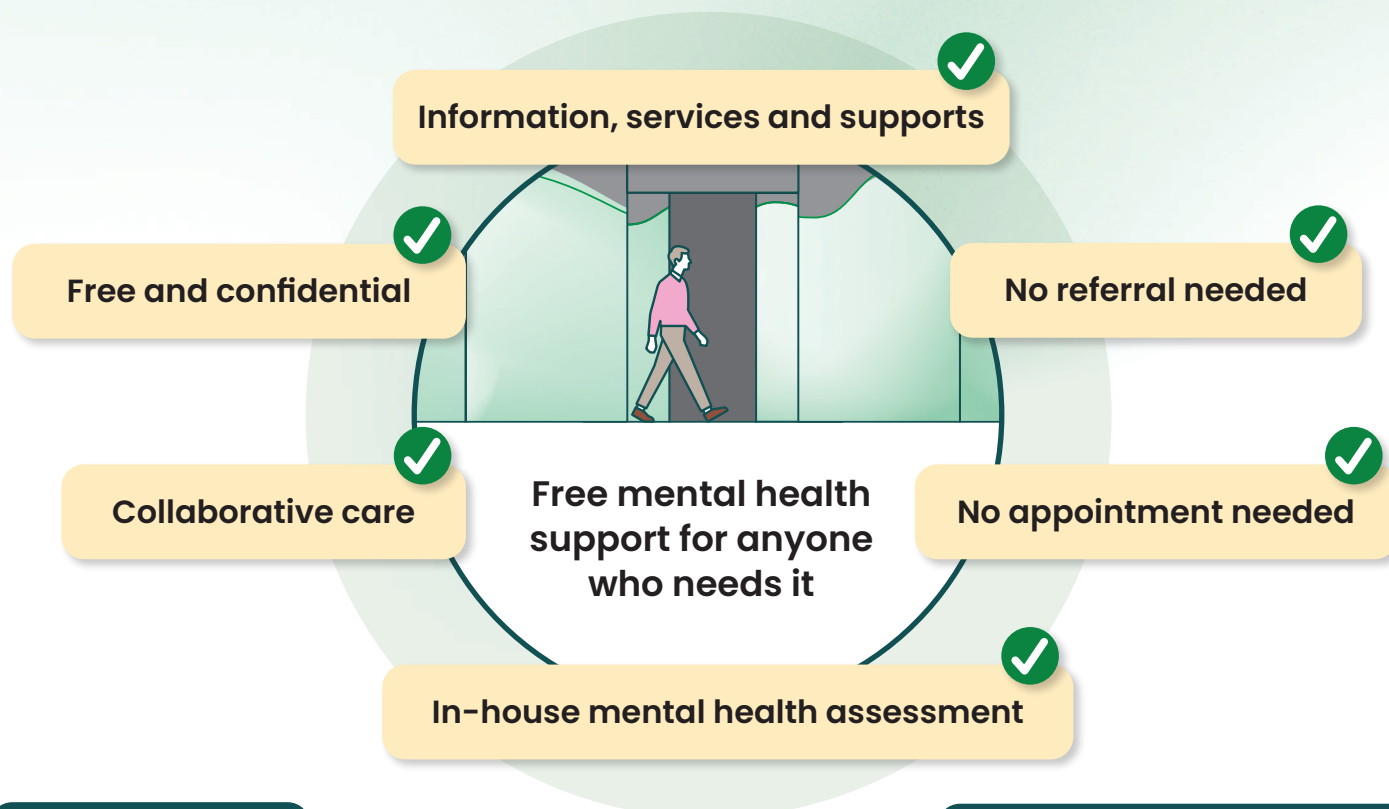


Mental Health Centres

How Medicare Mental Health Centres can support your patients



Services

In-house mental health assessment and referral

Immediate and follow-up care for anyone experiencing distress. Short and medium-term care for anyone experiencing moderate to severe distress.

Referrals to ongoing care

Help connecting with ongoing or longer-term services, and social supports like health, mental health, housing and employment.

Additional support

Sessions do not count towards a patient's mental health treatment plan under the Better Access program.

Multidisciplinary care

Staffed by highly qualified mental health professionals from a range of disciplines and people with lived experience.

Collaborative care

Centres work with referrers and community-based services to deliver care.

Not provided

- Crisis or emergency services.
- Services for people who cannot be managed safely within the Medicare Mental Health Centre environment.
- Pathology, radiology or pharmacy services and general health care.
- Ongoing, long-term psychosocial support, psychological therapies or recreational services.
- Direct financial support.
- Residential or bed-based services, including short-stay services.
- Disability support services provided through the NDIS.

Call Medicare Mental Health on **1800 595 212** or visit medicarementalhealth.gov.au for help to access local mental health services, resources and supports that are right for your patient.



Find a centre