

South Western Sydney

PHN Fact sheet 2024





Snapshot^(b)

Total Population (ERP 2022):	1.08M
First Nations People (ERP 2022):	26.33K
Total Population Growth (2016 - 2022):	11.86%
Population Aged 65+ (ERP 2022):	153.28K
Population Growth Aged 65+ (2016 - 2022):	24.96%
Area Square kilometers:	6.19K



Key Information

Need for Assistance ^(a)	Unemployment Rate ^(b)
6.77%	4.61%
English Proficiency ^(a)	
Not well	7.61%
Not at all	2.51%





Demographics^(b) (ERP 2022)



49.70%

Male



50.30%

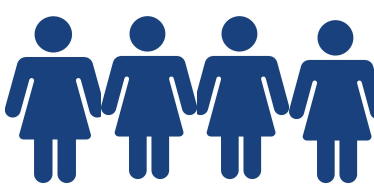
Female

Male



537.42K

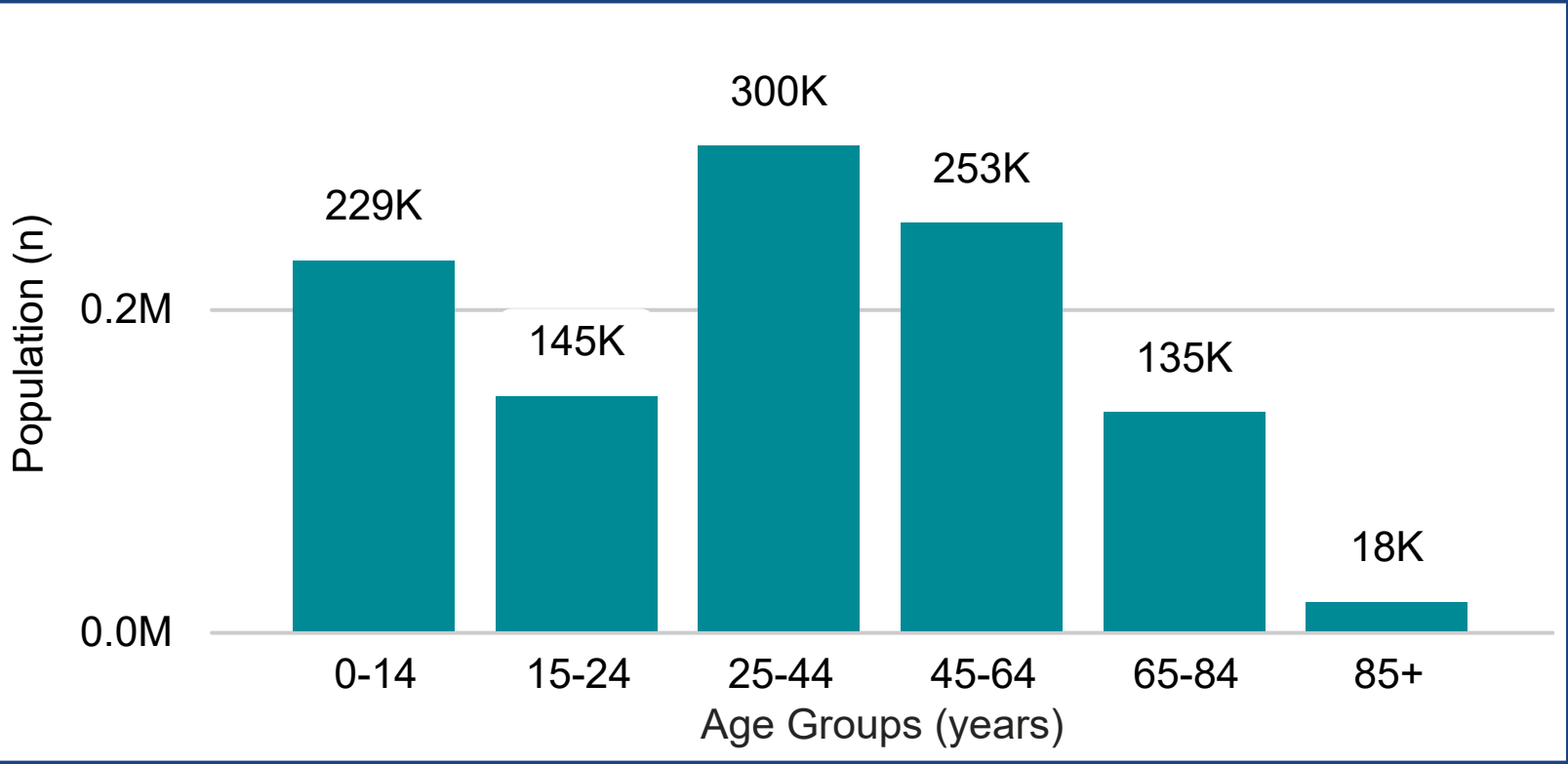
Female



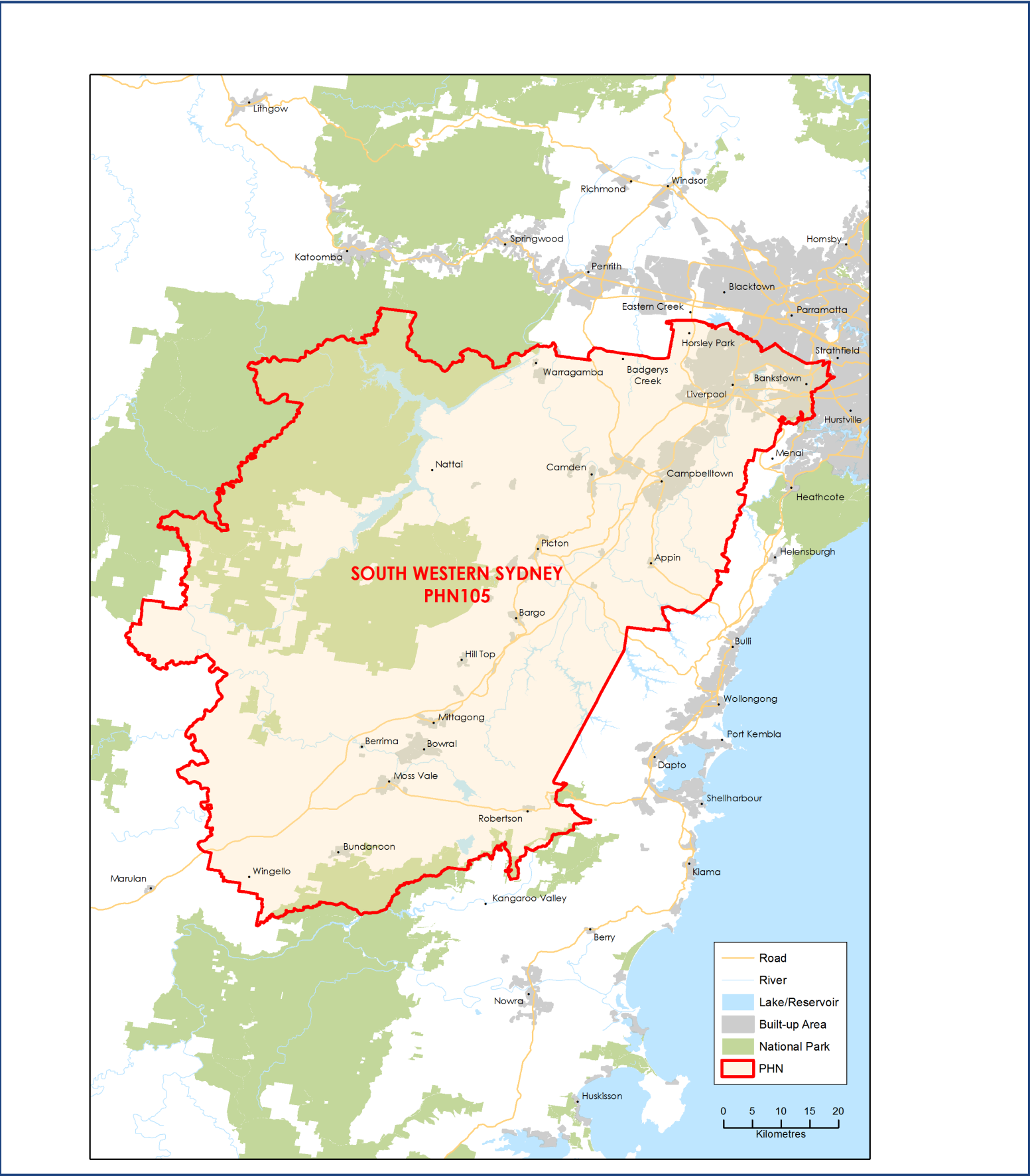
543.82K



Age^(b) (ERP 2022)



Map (2022)



Source: a - Australian Bureau of Statistics - Census of Population and Housing 2021 | b - PHIDU Social Health Atlas of Australia Data by Primary Health Network Dec 2023
ERP: Estimated Resident Population | **Need for Assistance:** Core Activity need for Assistance ([ASSNP](#)) | **English Proficiency:** [Proficiency in spoken English \(ENGLP\)](#) | [Australian Bureau of Statistics \(abs.gov.au\)](#)
Data has been obtained from a range of publicly available sources, and DoHAC does not take responsibility for data quality. **Last Updated:** March 2025