

Northern Sydney



PHN Fact sheet 2024

Snapshot^(b)

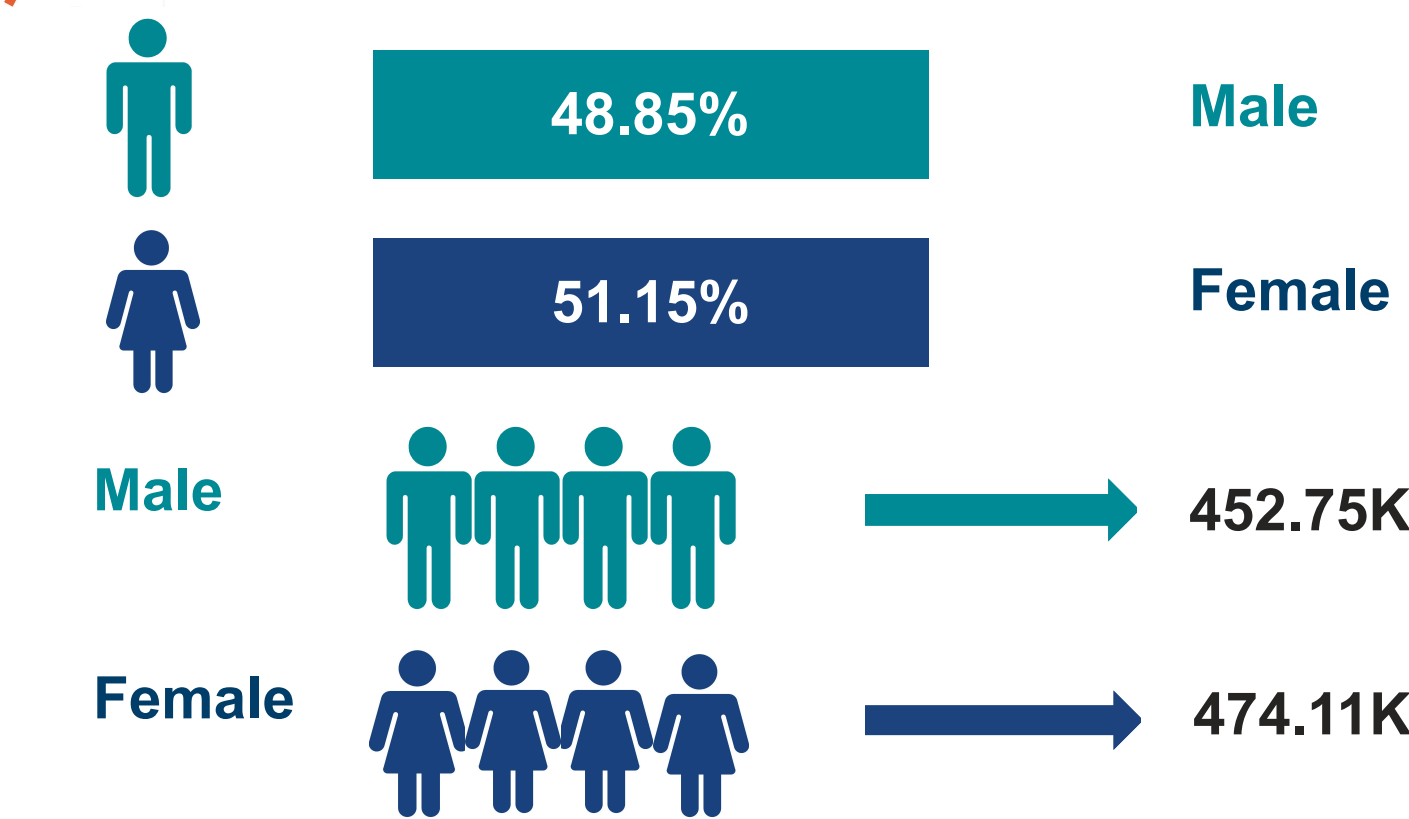
Total Population (ERP 2022):	926.86K
First Nations People (ERP 2022):	5.07K
Total Population Growth (2016 - 2022):	1.21%
Population Aged 65+ (ERP 2022):	160.66K
Population Growth Aged 65+ (2016 - 2022):	12.85%
Area Square kilometers:	889.80

Key Information

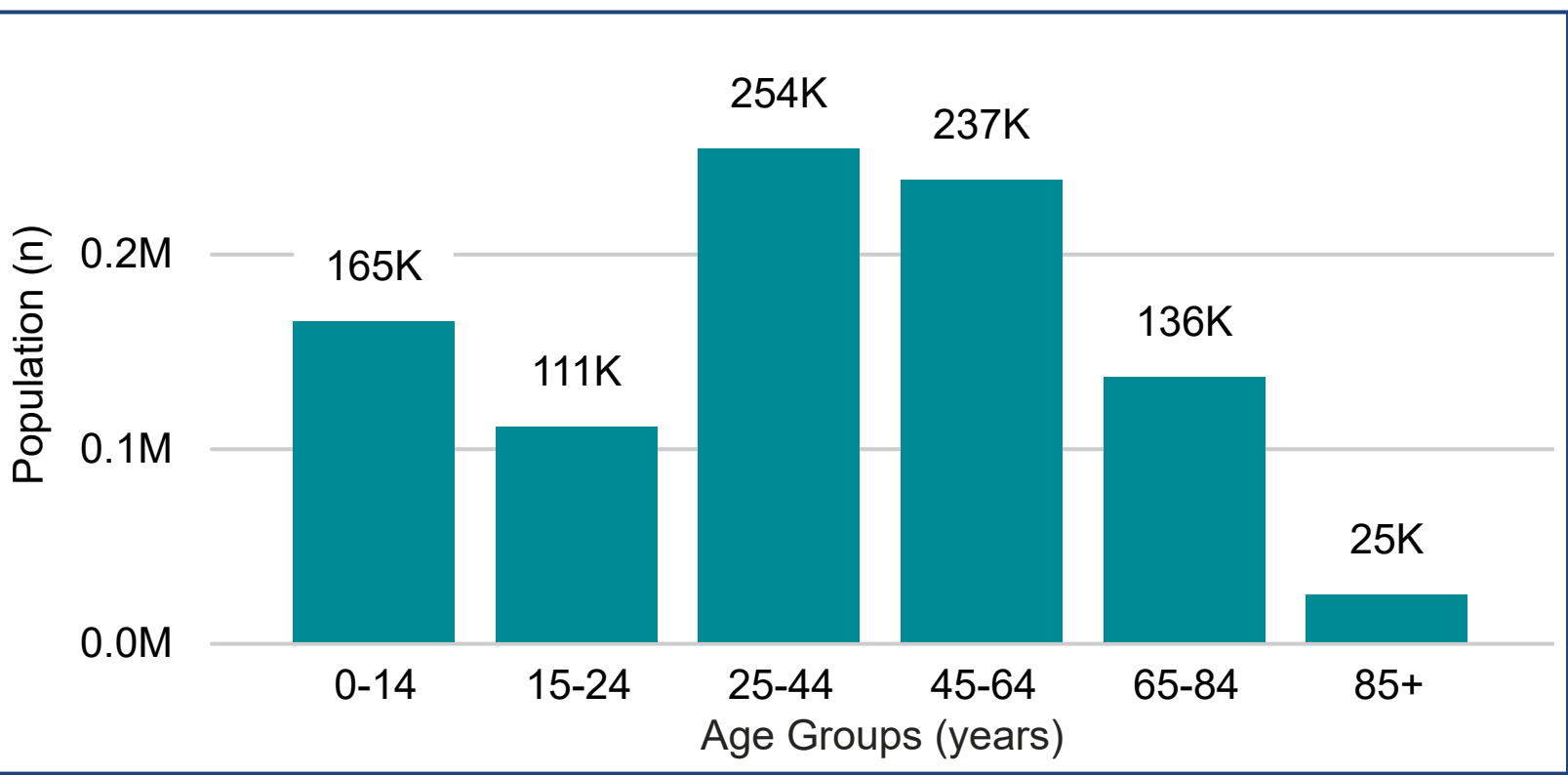
Need for Assistance ^(a)	Unemployment Rate ^(b)
3.95%	2.57%
English Proficiency ^(a)	
Not well	3.12%
Not at all	1.15%



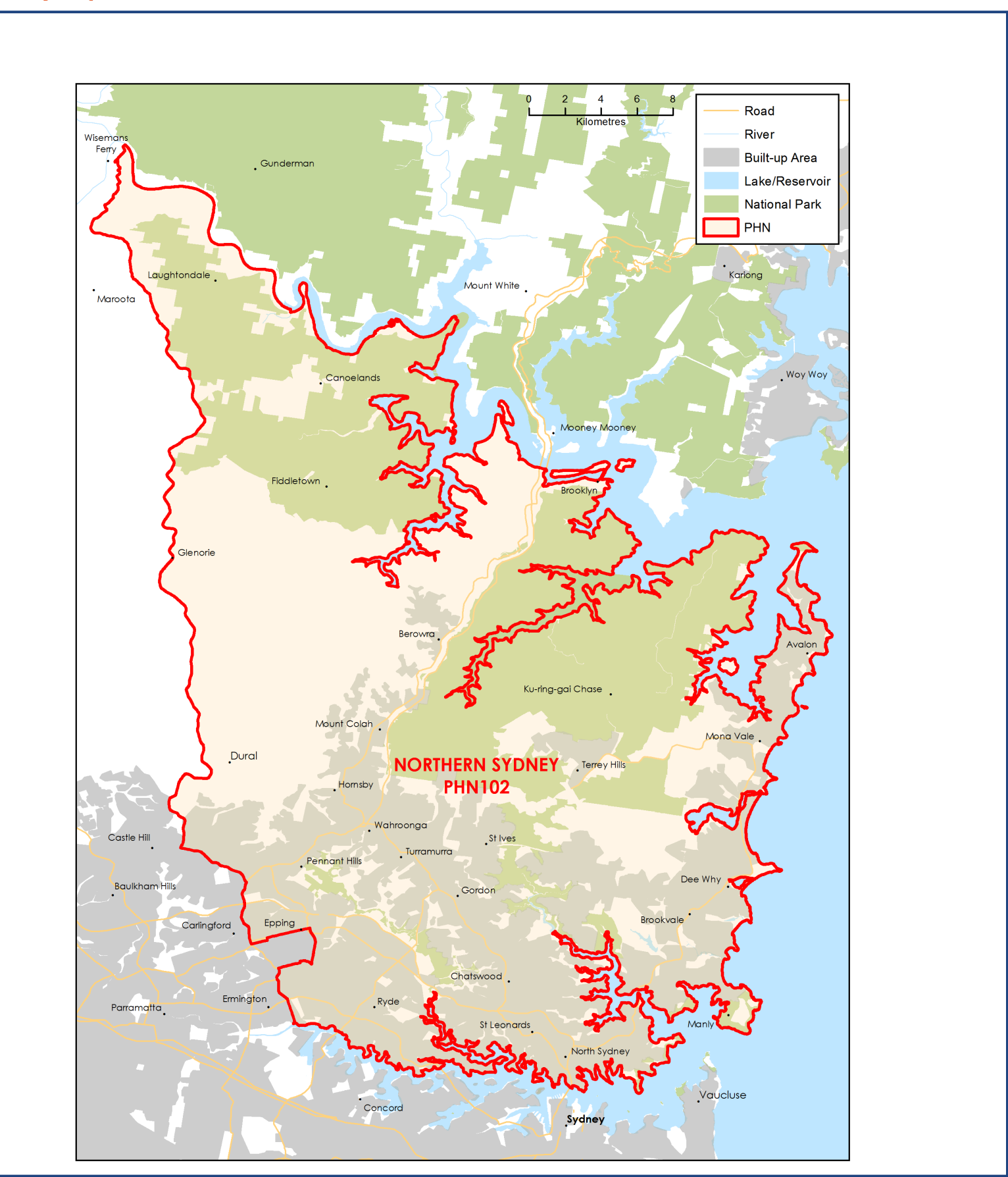
Demographics^(b) (ERP 2022)



Age^(b) (ERP 2022)



Map (2022)



Source: a - Australian Bureau of Statistics - Census of Population and Housing 2021 | b - PHIDU Social Health Atlas of Australia Data by Primary Health Network Dec 2023
ERP: Estimated Resident Population | **Need for Assistance:** Core Activity need for Assistance ([ASSNP](#)) | **English Proficiency:** [Proficiency in spoken English \(ENGLP\)](#) | [Australian Bureau of Statistics \(abs.gov.au\)](#)
Data has been obtained from a range of publicly available sources, and DoHAC does not take responsibility for data quality. **Last Updated:** March 2025