

# Central and Eastern Sydney


## PHN Fact sheet 2024

### Snapshot<sup>(b)</sup>

Total Population (ERP 2022):	1.55M
First Nations People (ERP 2022):	19.42K
Total Population Growth (2016 - 2022):	-0.92%
Population Aged 65+ (ERP 2022):	232.50K
Population Growth Aged 65+ (2016 - 2022):	11.22%
Area Square kilometers:	626.91

### Key Information

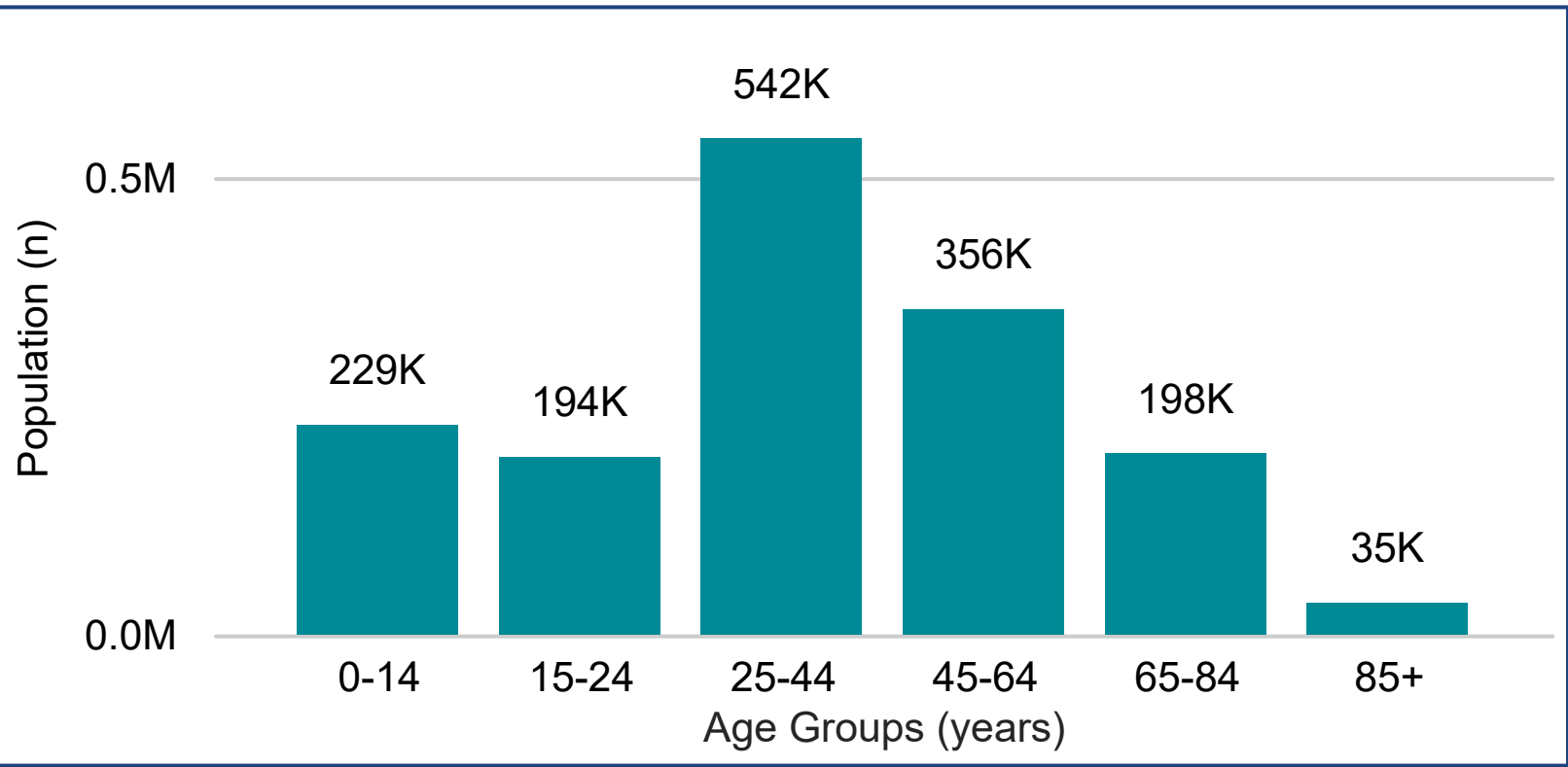
Need for Assistance <sup>(a)</sup>	Unemployment Rate <sup>(b)</sup>
4.48%	3.02%
English Proficiency <sup>(a)</sup>	
Not well	4.83%
Not at all	1.46%



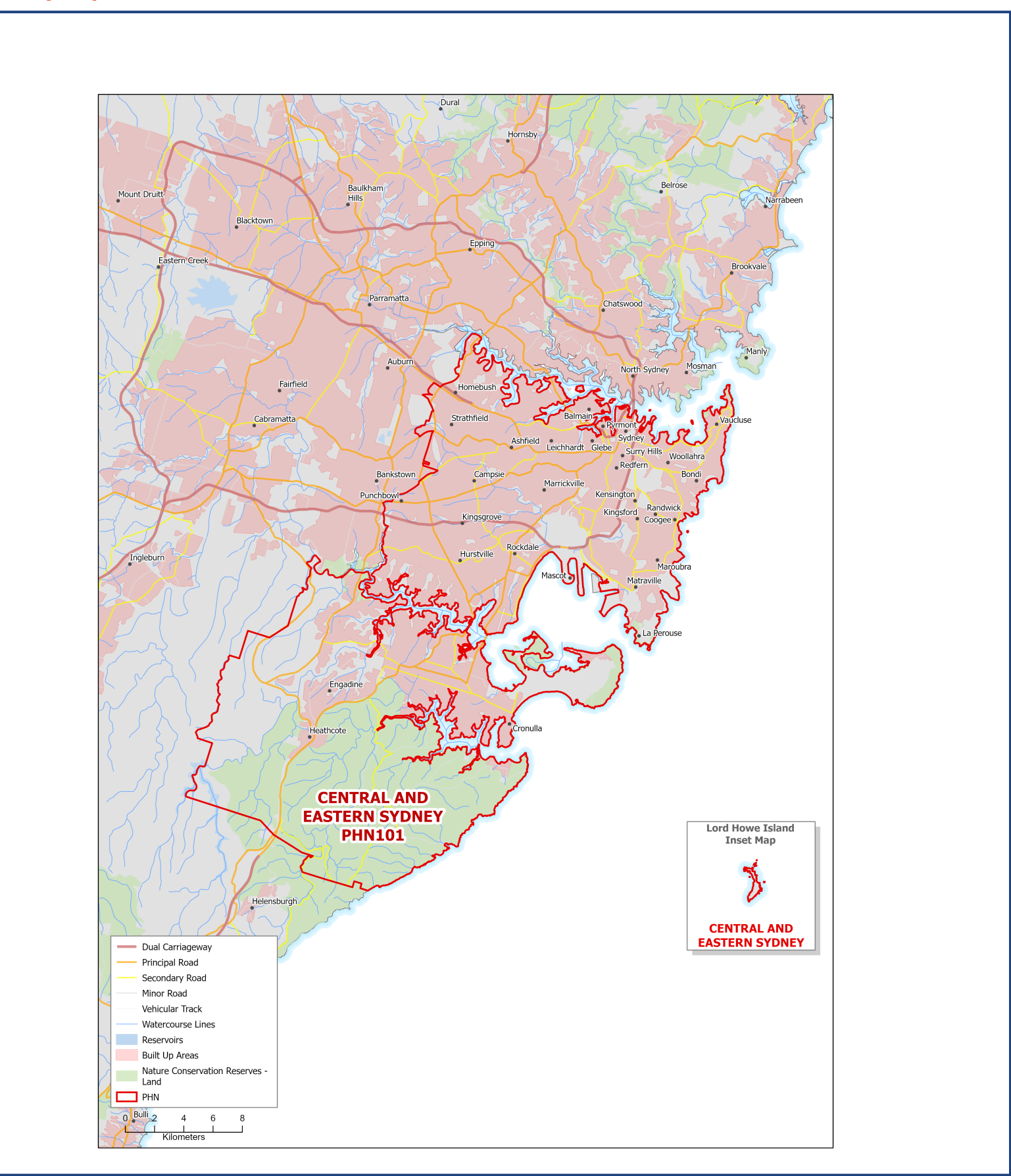
### Demographics<sup>(b)</sup> (ERP 2022)



### Age<sup>(b)</sup> (ERP 2022)



### Map (2022)



**Source:** a - Australian Bureau of Statistics - Census of Population and Housing 2021 | b - PHIDU Social Health Atlas of Australia Data by Primary Health Network Dec 2023

**ERP:** Estimated Resident Population | **Need for Assistance:** Core Activity need for Assistance ([ASSNP](#)) | **English Proficiency:** [Proficiency in spoken English \(ENGLP\)](#) | [Australian Bureau of Statistics \(abs.gov.au\)](#)

Data has been obtained from a range of publicly available sources, and DoHAC does not take responsibility for data quality. **Last Updated:** March 2025