

Brisbane South

PHN Fact sheet 2024

Snapshot^(b)

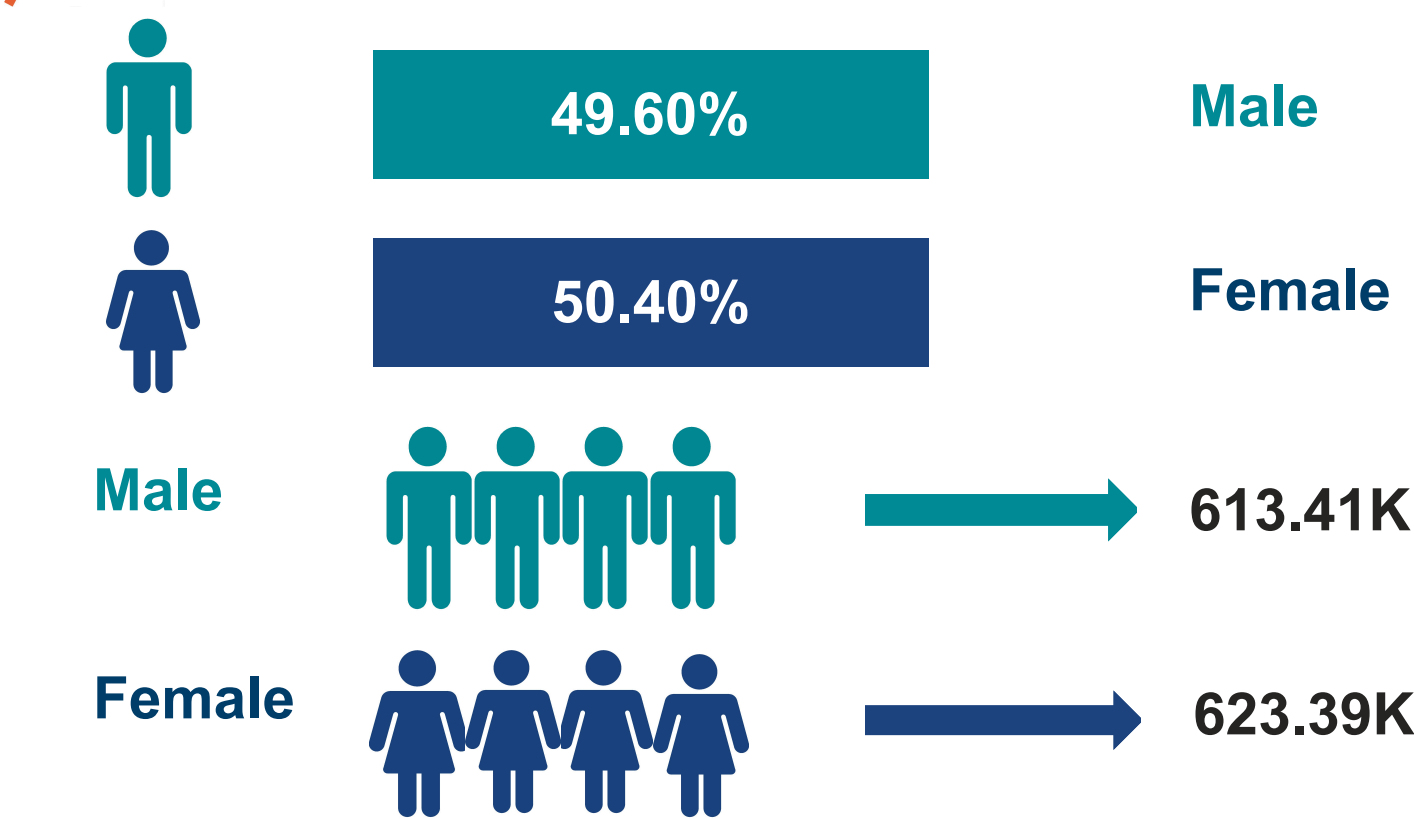
Total Population (ERP 2022):	1.24M
First Nations People (ERP 2022):	37.82K
Total Population Growth (2016 - 2022):	10.48%
Population Aged 65+ (ERP 2022):	175.34K
Population Growth Aged 65+ (2016 - 2022):	24.97%
Area Square kilometers:	3.77K

Key Information

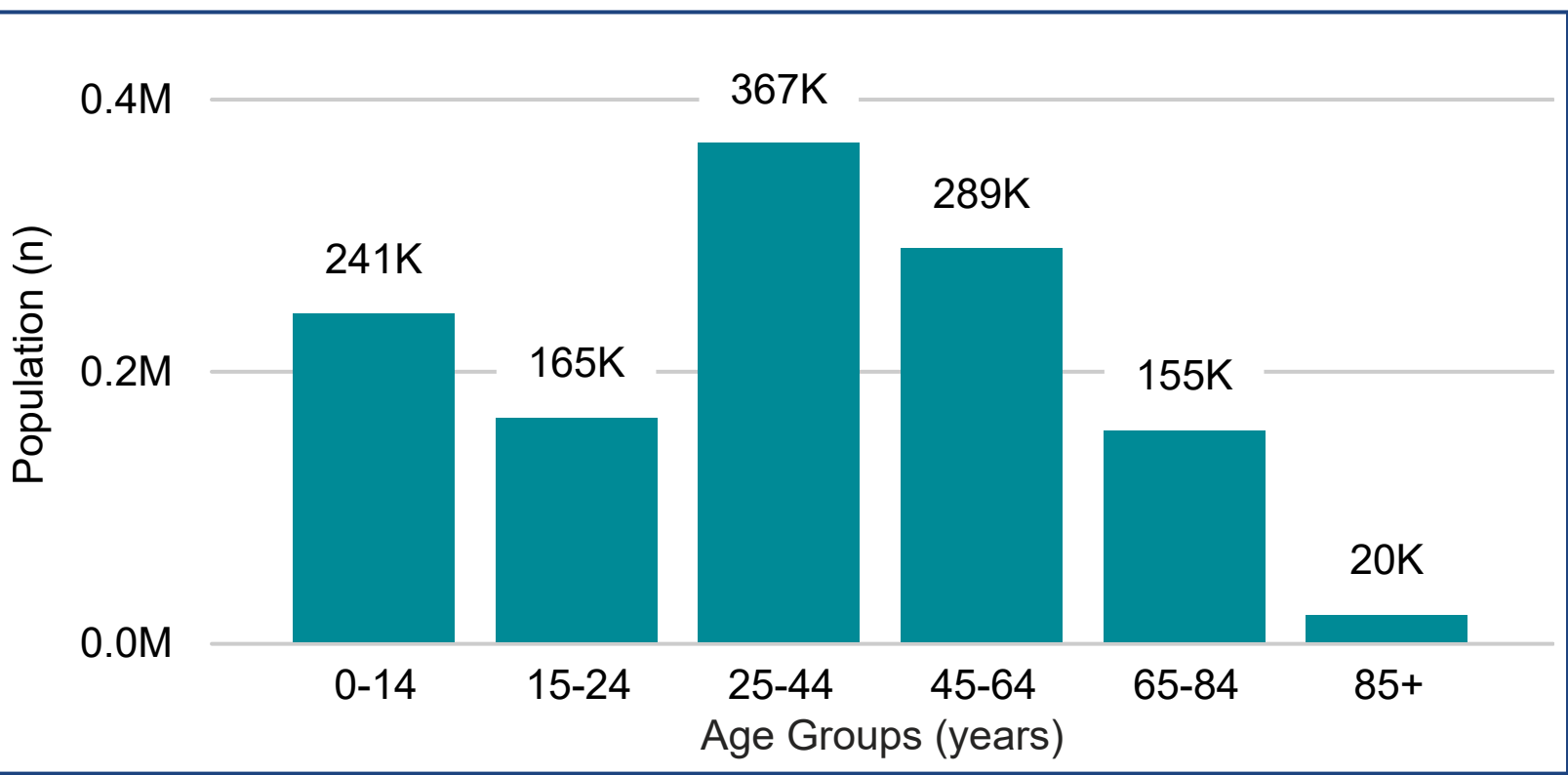
Need for Assistance ^(a)	Unemployment Rate ^(b)
5.58%	3.92%
English Proficiency ^(a)	
Not well	2.79%
Not at all	0.92%

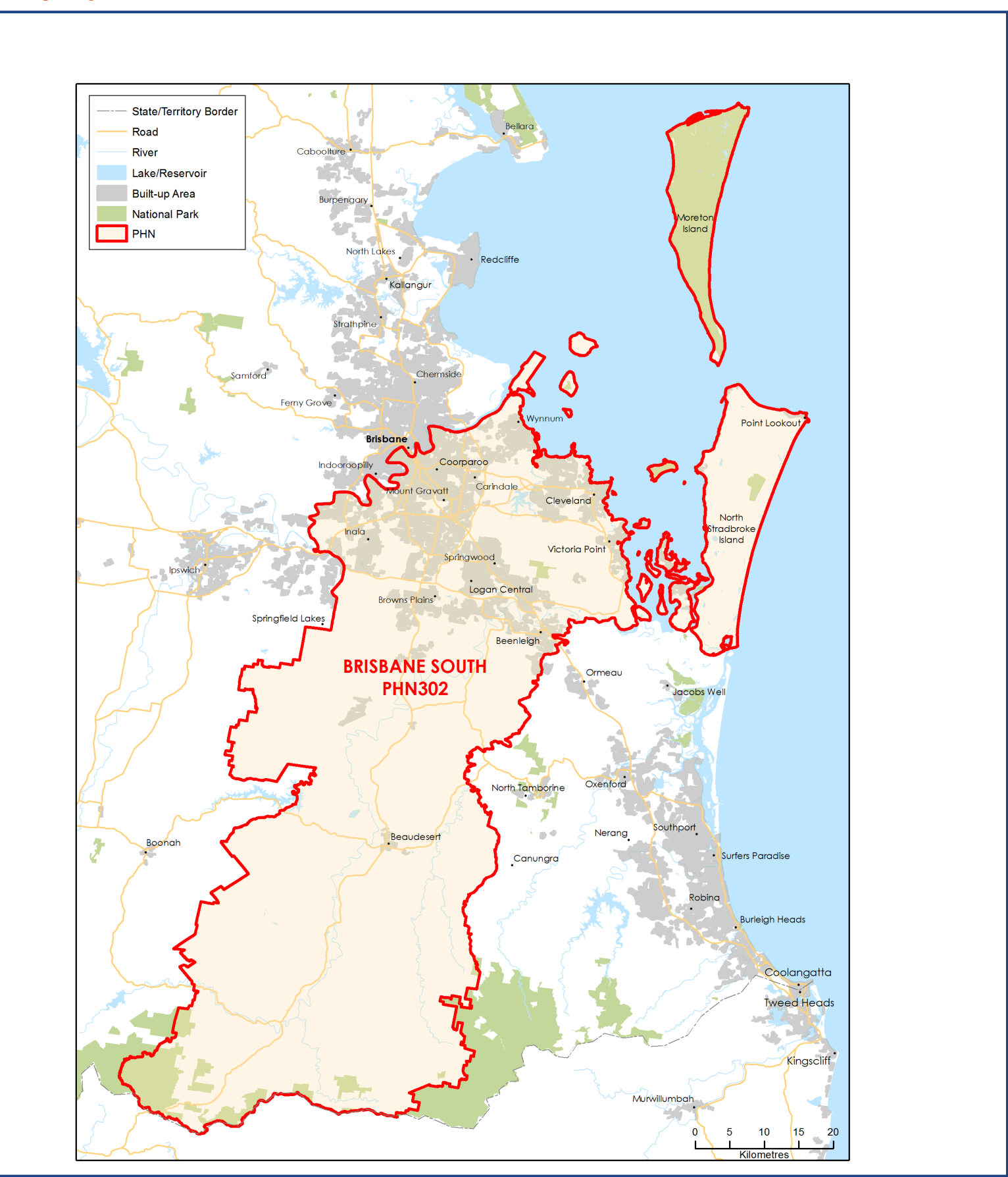
Demographics^(b) (ERP 2022)



Age^(b) (ERP 2022)



Map (2022)



Source: a - Australian Bureau of Statistics - Census of Population and Housing 2021 | b - PHIDU Social Health Atlas of Australia Data by Primary Health Network Dec 2023
ERP: Estimated Resident Population | **Need for Assistance:** Core Activity need for Assistance ([ASSNP](#)) | **English Proficiency:** [Proficiency in spoken English \(ENGLP\)](#) | [Australian Bureau of Statistics \(abs.gov.au\)](#)
Data has been obtained from a range of publicly available sources, and DoHAC does not take responsibility for data quality. **Last Updated:** March 2025